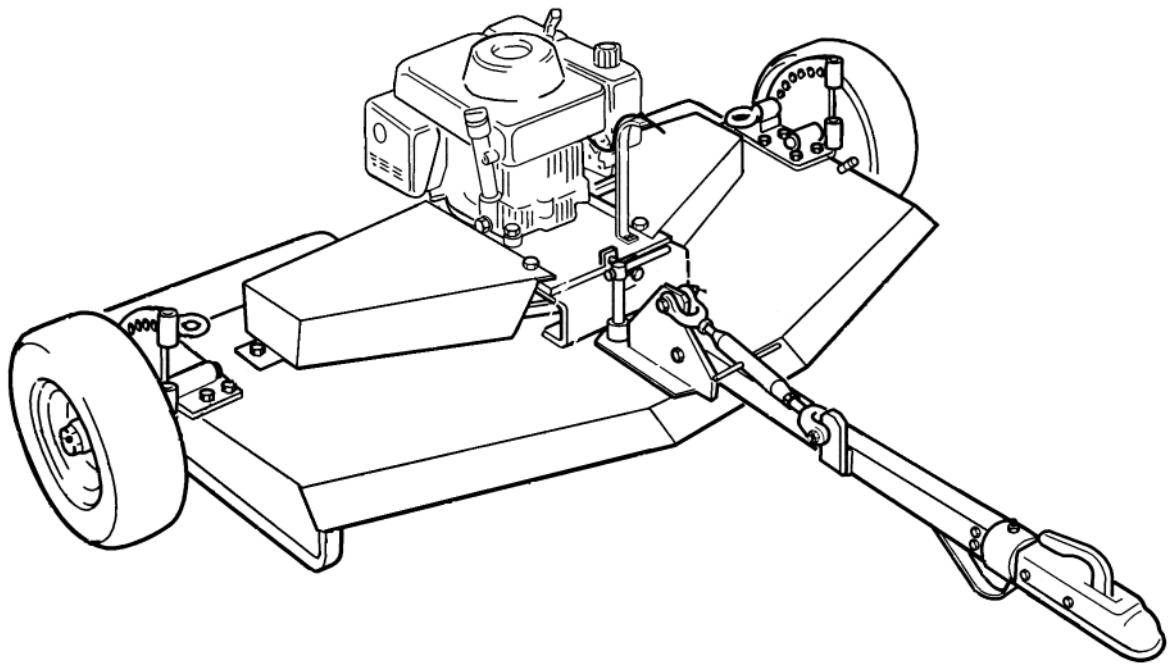


Operation Manual and Parts Book

Wessex AR120, AR150 & AR180 Trailed Rotary Mowers



Product Code: L2004

CONTENTS

Welcome to your new Wessex Product1
Safety Decals2, 3
Important Safety Warnings4
Important ATV Safety Warnings5, 6
Warranty7
Setting up your Mower8
Using your Wessex Mower8
Height Adjustment8
Belt Adjustment / Lubrication9
Maintenance10
Troubleshooting / Winter Storage11
Parts Illustration - AR120 & AR150 - Mainframe Assembly12
Parts List - AR120 & AR150 - Mainframe Assembly13
Parts Illustration - AR180 - Mainframe Assembly14
Parts List - AR180 - Mainframe Assembly15
Parts Illustration - Front and Rear Wheel Options16
Parts List - Front and Rear Wheel Options17
Parts Illustration / Parts List - Spindle Assembly18
Parts Illustration / Parts List - AR120 and AR150 Engine Options19
Parts Illustration / Parts List - AR150 and AR180 Engine Options20
Parts Illustration / Parts List - Control Arm Option21
Parts Illustration / Parts List - AR180 Choke Assembly22
CE Certificate23

WELCOME TO YOUR NEW WESSEX PRODUCT

Thank you for purchasing a Wessex product. As a Wessex customer, you now number among the most important people of our business and we will endeavour to give you the best service available through our dealer network.

Please read this Manual carefully and familiarise yourself and other persons that will be using the machine with its contents, to ensure the optimum performance and working life of your machine. It is advisable that a copy of this Manual is kept in the workshop and one copy with the machine. Further copies are available through your dealer.

On delivery, your dealer should go through the workings of the machine with you, explaining the setting up procedures, all of which are contained in this manual for further reference. The Warranty Registration Form must also be completed and returned to us **within 7 days of delivery** in order to validate the Warranty.

**PLEASE READ THE FOLLOWING PAGES CAREFULLY BEFORE USING YOUR MACHINE
AND KEEP THIS MANUAL IN A SAFE PLACE.**

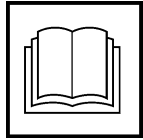


**THIS SAFETY SYMBOL IS TO ALERT OPERATORS OF A HAZARD
THAT MAY RESULT IN INJURY.
ALWAYS FOLLOW INSTRUCTIONS CAREFULLY**

SAFETY DECALS



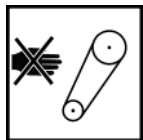
- GB **ATTENTION** Description of pictograms.
 F **ATTENTION** Description des pictogrammes.
 D **VORSICH** Beschreibung der piktogramme.



- GB Read Operating manual before use.
 F Lisez Manual D'Opération avant l'utilisation.
 D Vor der Benutzung, Betriebshandbuch lesen.



- GB Ear defenders must be worn.
 F Défenseurs des oreilles doivent être portés.
 D Gehörschutz getragen werden.



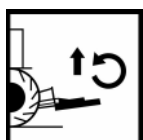
- GB Never remove guards or attempt adjustment until rotor has stopped.
 F Ne retirez jamais les gardes ou d'ajustement tentative jusqu'à ce que toutes les pièces mobiles ont été interrompus.
 D Schutzvorrichtung niemals abnehmen oder einstellung versuchen, bevore der rotor abstellt.



- GB Bystanders must be at least 20 metres from machine range of action.
 F Des spectateurs doivent s'écarter au moins 20 mètres du rayon d'action de la machine.
 D Umstehenden müssen sich mindestens 20 meter vom maschinenbetriebsraum entfernen.



- GB Stand clear. Flying objects possible.
 F S'écarter! Possibilité d'objets volants.
 D Zurückbleiben! Herumfliegende objekte möglich



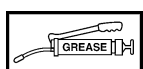
- GB Lift Machine before turning
 F Levez la machine avant de la tourner
 D Maschine aufheben, bevor man sie umdreht.



- GB Examine blades regularly. The operator is responsible for machine damage caused by unbalanced rotors.
 F Examinez des lames régulièrement. L'opérateur est responsable des dommages à la machine provoqués par des rotors mal équilibrés
 D Klingen regelmäßig kontrollieren. Der abeiter ist an den durch unausgewogenen rotoren maschinenschäden verantwortlich.



- GB Keep hands and feet clear
 F Garder les mains et les pieds.
 D Halten Sie Ihre Hände und Füße.



- GB Grease points
 F Les points de graissage
 D Grease Punkte.

SAFETY DECALS



- GB Lifting Point
- F Point de levage
- D Anschlagpunkt



- GB It is the operators responsibility to ensure that the machine is compatible with the loading capacity of the towing vehicle.
- F Il est de la responsabilité des opérateurs afin de s'assurer que la machine est compatible avec la capacité de chargement du véhicule tracteur.
- D Es ist den Betreibern dafür zu sorgen, dass die Maschine mit der Belastbarkeit des Zugfahrzeugs ist.



- GB Never carry passengers on implements unless designed to do so.
- F Ne jamais transporter des passagers sur instruments sauf s'ils sont conçus pour le faire.
- D Niemals Passagiere implementiert, es sei denn ausgelegt, dies zu tun.

IMPORTANT SAFETY WARNINGS



Wessex machines are guarded for your protection, but you must always observe certain elementary precautions. Machines are potentially **dangerous** and should be used with the greatest respect and **ALL OPERATORS MUST** read this manual and be aware of all safety precautions.

1. **NEVER** attempt any adjustment whatsoever, unless the machine is **COMPLETELY** at a standstill.
2. **NEVER** attempt to clear any obstructions around the mower unless the machine is **COMPLETELY** at a standstill.
3. **NEVER** remove belt guards unless the machine is **COMPLETELY** at a standstill.
4. **NEVER** remove safety guards which are provided for your protection.
5. **NEVER** operate the mower with people behind, keep everybody (especially children and animals) at a safe distance, **minimum 20 metres**.
6. Stand well back from the machine when cutters are spinning.
7. Regularly inspect the **BLADES AND FIXING BOLTS** to ensure that they are in tip-top condition. Replace blades **IMMEDIATELY** if any signs of fracture or excess wear becomes apparent. Serious damage, which is excluded from our warranty conditions, may result from using your mower with an unbalanced rotor. When replacing blades, always fit new mounting bolts and nuts to ensure that the rotor is balanced and running smoothly.

HEALTH AND SAFETY - Noise at Work Regulations

READING AT THE OPERATORS EAR

Wessex AR Series mowers: Approximately 94 D.B.A

Depending on conditions and material being cut, this reading may alter, it is therefore advisable for users to do their own assessment.



In compliance with the above regulations, Ear Protectors must be worn when operating machinery.

IMPORTANT ATV SAFETY WARNINGS

READ THE FOLLOWING CAREFULLY

IMPORTANT SAFETY INSTRUCTIONS ON COUPLING IMPLEMENTS AND ATTACHMENTS TO ATV'S



TRAINING

- It is most essential that all operators of ATV's are trained by a certified training organisation.
- It is strictly forbidden that any person under 16 years of age should ride an ATV.
- Any person 17 years of age must have had training before towing a trailer with an ATV.
- Contact your local HSE office for approved training courses.

BODY PROTECTION

- Remember that when riding on an ATV the only form of protection that you have is what you wear. **ALWAYS** wear a helmet, eye protection and suitable robust clothing.
- Never operate an ATV or attachments while under the influence of alcohol or non-prescription drugs.
- Contact your doctor before operation of an ATV or attachments while under the influence of any prescription drugs.

ATV MANUAL

- Before coupling any implement to your ATV refer to your ATV handbook.

STABILITY

- When using equipment coupled to an ATV it is very important to remember that the handling characteristics of your ATV will change dramatically, whether the additional load is placed on the front or rear rack or trailed on the towing ball hitch.

WEIGHT CAPACITY

- Always ensure that the implement or attachment that you are coupling to the ATV is within the ATV's drawbar loading or weight carrying capacity. Refer to the ATV manufacturer's handbook to obtain information on the specific capacities.
- It is most important that you know the weight of your load, especially when on slopes or hillsides.
- As a guide, on level ground with an unbraked implement, the weight of the implement should be approximately no more than twice the unladen weight of the ATV. This should be reduced on sloping, uneven or rough ground.

WEIGHT TRANSFER

- Always take great care when towing loads which may be subject to weight transfer e.g. liquids or livestock, especially on hillsides and slopes.
- Always restrict the movement of animals or rolling objects in a trailer.

IMPORTANT ATV SAFETY WARNINGS

TOWING

- Never tow loads larger or heavier than recommended for your ATV. (See ATV hand book).
- Never tow or turn across a slope.
- Never tow down a steep slope with a large or heavy load.
- When towing heavy loads there is a significant risk of jack-knifing or overturning.

ROUGH TERRAIN

- Always take care when operating implements on rough terrain or uneven ground.
- Take special care when operating on slippery surfaces especially hill sides or slopes.
- Take extra care when towing on hillsides, slopes or rough terrain.

OPERATING ON ROADS

- Implements are not designed for travelling distances on roads but when crossing or going short road distances always travel slowly and do not exceed 20 KPH.
- Make sure that your equipment complies with Road Vehicle Lighting Regulations.
- Ensure that you have the correct insurance cover and comply with all relevant laws.

LOAD SECURITY

- Always secure your load firmly with ratchet straps.
- Make sure that your load is evenly; distributed.
- Never stack a high load, high loads increase the risk of overturning.

PASSENGERS

- Never carry passengers on any kind of implement or attachment, especially children.

MAINTENANCE

- Service your ATV and attachments as per the manufacturer's handbook. Regular servicing of your ATV will ensure that it will steer, stop and handle to its best ability and your attachment will operate as safely and effectively as possible. Regular servicing helps ensure the longest possible working life for your equipment.

EQUIPMENT SAFETY INSPECTION

- Check tyre pressure, incorrect tyre pressure can seriously affect the handling of your ATV. (See Operators handbook).
- Maintain your equipment regularly to keep it in safe working order.

ROUTE / RISK ASSESSMENT

- Assess and plan the route that you intend to travel to avoid any type of hazards i.e. rocks, boulders, ditches, hidden fences or wire, pot holes, low hanging branches or any other type of hazard.
- Where possible stay with a routine route to avoid hazards.
- The risk may change in wet or wintry conditions, avoid slopes where possible.

WARRANTY

Your Wessex product or equipment is warranted free from defect in workmanship or manufacture for one year from date of purchase. Any parts which appear to us to be defective, either in material or workmanship shall be replaced or repaired at no cost to the purchaser, subject to the following conditions:

1. The registration card enclosed with this booklet must be returned to us within seven days of purchase.
2. Any failure in the machine should be reported in the first instance immediately to your dealer, who will act on your behalf to resolve the matter to your satisfaction.
3. The defective parts will be returned by your dealer to us, accompanied by a full statement describing the failure and the circumstances and conditions in which the failure occurred.
4. The following are specifically excluded from our terms of warranty:
 - a) Fair wear and tear, especially to belts, brushes, blades and spinners.
 - b) Damage to blades or brushes caused through incorrect positioning of the rotor (see instructions).
 - c) Damage caused by neglect or lack of lubrication.
 - d) Damage caused by misuse or abuse.
 - e) Damage caused whilst the machine is in transit.
 - f) Damage caused to the frame of the machine by running the machine with unbalanced rotors, blades or spinners.
 - g) Damage caused to the machine by use with loose nuts, bolts, screws or any other type of fittings.
5. The warranty is for the benefit of the first user only.
6. Wessex International decisions will be final and binding.

Note:

It is recommended that every machine is inspected after one hour of operation to check that all nuts, bolts, screws or any other types of fixings are tight and any loose fixings or components should be rectified as appropriate.

Further inspections should be carried out at regular intervals thereafter.

SETTING UP YOUR WESSEX MOWER

1. Reverse your towing vehicle up to the machine, and connect to the ball hitch, ensuring that it is locked in position.
2. With the vehicle and machine on level ground, ensure that both wheels are set at the same height.
3. Now adjust the drawbar adjuster to ensure that the machine is parallel to the ground from front to back.

USING YOUR WESSEX MOWER

WARNING

When starting and stopping the engine keep hands and feet clear of deck. Always stop the engine before making any adjustments to the mower.

1. The engine on your mower can be started either with the throttle set at high or low revs, but always ensure that the revs are immediately adjusted so that the centrifugal clutch is either completely disengaged or completely engaged. Running the machine with the clutch partially engaged will rapidly cause wear to the clutch.
2. Depending on the volume of material to be cut, you will quickly arrive at the optimum forward speed that will not strain the engine, but will also give a fine cut. You will establish by experience what is the optimum forward speed for your conditions, but on regularly maintained grass you should achieve a good finish at 5 -6 mph (8 - 9 km/h).
3. Long, wet grass will have to be cut more slowly. In very difficult conditions better results are obtained by making two passes, in opposite directions - lowering the cutting height for the second pass.

HEIGHT ADJUSTMENT

1. First insert the adjustment handle into the socket on the wheel pivot plate and push down to take the weight of the machine. With the other hand pull out the index pin, raise or lower the handle and re-insert the index pin in the required hole. Repeat on the opposite side of the machine, ensuring that both side are the same.
2. Replace the handle into its socket.
3. Adjust the height of the drawbar by means of the screw adjuster to ensure that the body of the machine is parallel to the ground from front to back.

BELT ADJUSTMENT

- The drive belts are adjusted by moving the engine on its mounting plate in relation to the mower deck.
- First remove the belt covers; this will loosen the engine mounting plate. To tighten the belts, tighten the screw clockwise, pushing the engine and its driving pulley away from the centre rotor pulley. This will tighten both belts evenly.
- The belts should be free to move 12-15mm under finger pressure, halfway between the pulleys if they are too tight there will be undue stress on drive.
- When belts are adjusted correctly, tighten the locknut on the adjusting screw and replace the belt covers tightening down well.

LUBRICATION

DAILY

- Grease the spindle bearings through the grease nipples above the spindle pulleys.

REGULARLY

- Grease the wheels.
- Grease the thread on the drawbar adjuster.
- Grease the swivel and ball hitch on the tow bar.

MAINTENANCE

- **IMPORTANT!** Check that all fastening sets (bolts and nuts) are tight after the first hour of operation.

BELTS

- These should be checked periodically, and replaced if found to be fraying, cut, or damaged in any other way.

BLADES

- These should be regularly checked for condition. Damaged blades cause imbalance in the rotor, and in turn can cause serious damage to the mower, **which is specifically excluded from our warranty conditions.**
- If the mower begins to vibrate, stop work immediately and investigate. Almost certainly the cause will be damaged blades.

SPARE PARTS

Spare parts for your Wessex Mower can be obtained through our extensive dealer network. For details of your nearest supplier or technical information, please email parts@wessexintl.co.uk or telephone 01264 345870.

TROUBLESHOOTING

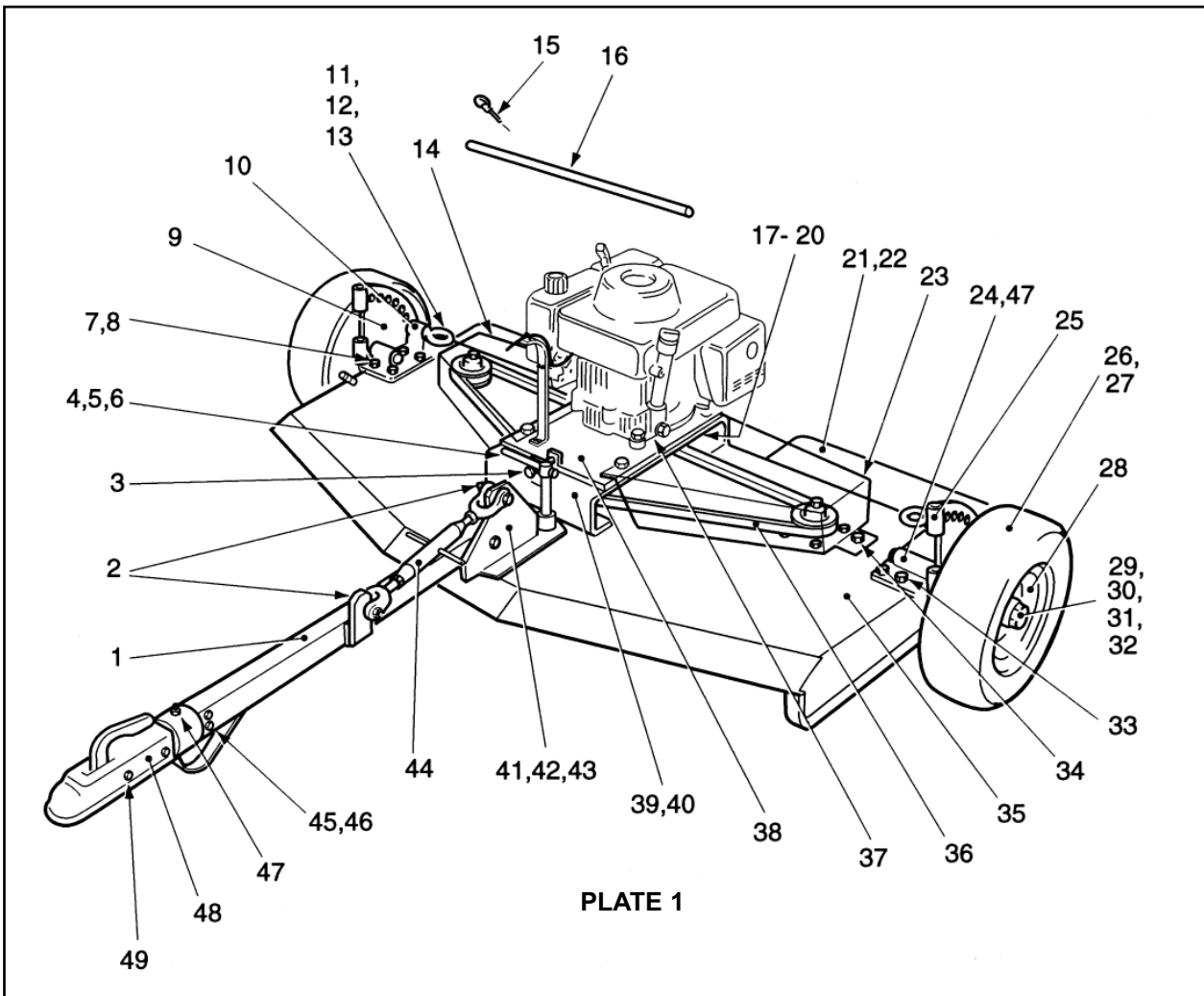
FAULT	CAUSE	REMEDY
Leaving wheel track uncut	1. Forward speed too fast 2. Cutting height too high	Reduce forward speed Lower cutting height
Bad quality of cut	1. Forward speed too fast 2. Excessive blade wear 3. Belts slipping	Reduce forward speed Replace blades Tighten belts
Narrow strip uncut	1. Possibly missing or broken blade	Inspect blades and replace as necessary
Excessive vibration	1. Damaged or missing blades 2. Main rotor bearing failed 3. Loose part	Inspect and replace blades Inspect bearings, replace if damaged Check all nuts and bolts are tight
Excessive scalping	1. Cutting height too low	Raise cutting height

WINTER STORAGE

Before winter storage, the Mower should be thoroughly inspected:-

- Repair or replace any worn or broken parts.
- Take special care to look at the blades, rotors and the bearings.
- Remove the belts and ensure that the rotors are free-spinning.
- Make sure that the belts are in good condition before re-fitting.
- Thoroughly wash the machine to remove all oil, grease, debris and materials.
- Grease up all grease points before storage to avoid any corrosion.
- Check or change the engine oil depending on the hours of work.

PARTS ILLUSTRATION - AR120 & AR150 MAINFRAME ASSEMBLY - PLATE 1



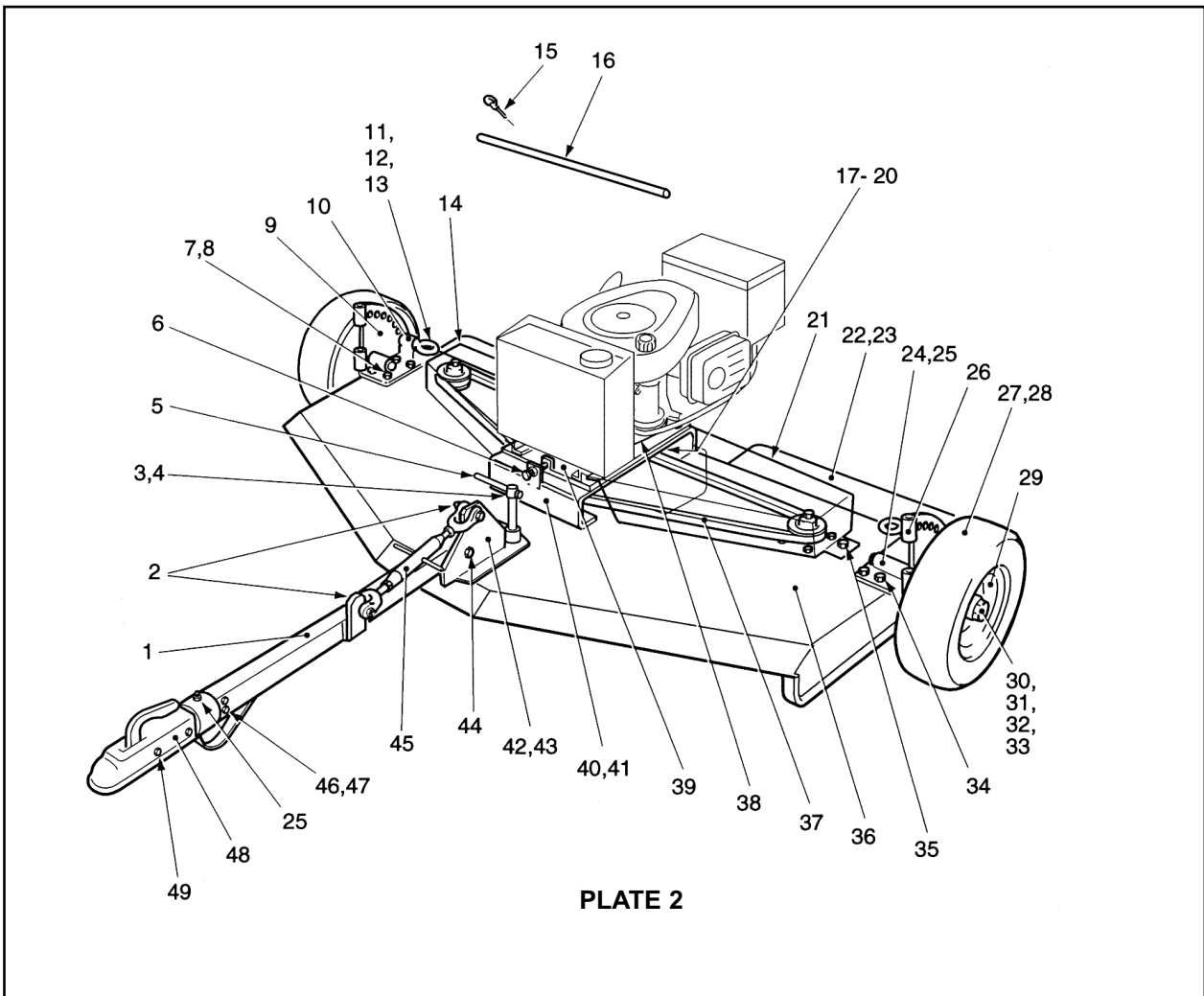
PARTS LIST - AR120 & AR150 MAINFRAME ASSEMBLY - PLATE 1

Item No.	AR 120 Part No.	Qty	AR 150 Part No.	Qty	Description
1	WX-18280	1	WX-18280	1	Drawbar
2	WX-17501	2	WX-17501	2	Drawbar Adjuster Fastening Set
3	WX-1257	1	WX-1257	1	Adjuster Bolt
4	WX-5228	1	WX-5228	1	Pillar
5	WX-3325	1	WX-3325	1	Disc Spring
6	WX-5228A	1	WX-5228A	1	Tommy Bar
7	WX-17601	4	WX-17601	4	Wheel Pivot Plate Fastening Set
8	WX-1520	1	WX-1520	1	Special Washer
9	WX-1453	1	WX-1453	1	Right Hand Axle Bracket
10	WX-1753	1	WX-1753	1	Right Hand Wheel Pivot Plate
11	WX-1039	2	WX-1039	2	Eye Nut

PARTS LIST - AR 120 & AR 150 MAINFRAME ASSEMBLY - PLATE 1

Item No.	AR 120 Part No.	Qty	AR 150 Part No.	Qty	Description
12	WX-1628	2	WX-1628	2	Index Pin
13	WX-1225	2	WX-1225	2	Spring
14	WX-8478	1	WX-8977	1	Right Hand Belt Cover
15	WX-0227	1	WX-0227	1	Lynch Pin
16	WX-1653	1	WX-1653	1	Adjustment Handle
17	WX-5062	1	WX-5062	1	Centrifugal Clutch
17			WX-5762	1	Centrifugal Clutch 17½ hp
18	WX-6551	1	WX-6551	1	Clutch Spacer
19	WX-6966	1	WX-6966	1	Motor Shaft Spacer
20	WX-1347	1	WX-1347	1	Key
21	WX-8578	2	WX-8678	2	Rear Guard
22	WX-17701	2	WX17701	2	Rear Guard Fastening Set
23	WX-8378	1	WX-8877	1	Left Hand Belt Cover
24	WX-1853	1	WX-1853	1	Left Hand Wheel Pivot Plate
25	WX-1553	1	WX-1553	1	Left Hand Axle Bracket
26	WX-B5351	2	WX-B5351	2	Tyre
27	WX-B5551	2	WX-B5551	2	Tube
28	WX-1352	2	WX-1352	2	Wheel Complete
29	WX-1538	2	WX-1538	2	Wheel Bearing Inner
30	WX-1638	2	WX-1638	2	Wheel Outer
31	WX-0645	2	WX-0645	2	Oil Seal
32	WX-4951	2	WX-4951	2	Hub Cap
33	WX-2801	1	WX-2801	1	Axle Bracket Fastening Set
34	WX-7701	2	WX-7701	2	Cover Fastening Set
35	WX-7879	1	WX-7979	1	Mainframe
36	WX-2234	2	WX-2434	2	Drive Belt
37	WX-6857	1	WX-6857	1	Motor Packer Plate
38	WX-7057	1	WX-7057	1	Motor Mounting Plate
39	WX-6957	1	WX-6957	1	Motor Bracket
39			WX-9757	1	Motor Mounting Plate 17½ hp
40	WX-6001	1	WX-6001	1	Mounting Plate Fastening Set
41	WX-18080	1	WX-18080	1	Drawbar Bracket
42	WX-18001	1	WX-18001	1	Drawbar Fastening Set
43	WX-1929	1	WX-1929	1	Bolt Plate
44	WX-2329	1	WX-2329	1	Drawbar Adjuster
45	WX-22401	1	WX-22401	1	Swivel Hitch Fastening Set
46	WX-12156	1	WX12156	1	Swivel Hitch
47	WX-0246	1	WX-0246	1	Grease Nipple
48	WX-2356	1	WX-2356	1	Ball Hitch
49	WX-9501	1	WX-9501	1	Ball Hitch Fastening Set

PARTS ILLUSTRATION - AR180 MAINFRAME ASSEMBLY - PLATE 2



PARTS LIST - AR180 MAINFRAME ASSEMBLY - PLATE 2

Item No.	Part No.	Description	Qty. per Machine
1	WX-18280	Drawbar	1
2	WX-17501	Drawbar Adjuster Fastening Set	2
3	WX-5228	Pillar	1
4	WX-3325	Disc Spring	1
5	WX-5228A	Tommy Bar	1
6	WX-1257	Adjuster Bolt	1
7	WX-17601	Wheel Pivot Fastening Set	4
8	WX-1520	Special Washer	2
9	WX-1453	Right Hand Axle Bracket	1
10	WX-1753	Right Hand Wheel Pivot Plate	1

PARTS LIST - AR180 MAINFRAME ASSEMBLY - PLATE 2

Item No.	Part No.	Description	Qty. per Machine
11	WX-1039	Eye Nut	2
12	WX-1628	Index Pin	2
13	WX-1225	Spring	2
14	WX-9977	Right Hand Belt Guard	1
15	WX-0227	Lynch Pin	1
16	WX-1653	Adjuster Bar	1
17	WX-5762	Centrifugal Clutch	1
18	WX-6551	Clutch Spacer	1
19	WX-6966	Motor Shaft Spacer	1
20	WX-1347	Key	1
21	WX-9877	Left Hand Belt Guard	1
22	WX-9078	Rear Guard	2
23	WX-17701	Rear Guard Fastening Set	1
24	WX-1553	Left Hand Wheel Pivot Plate	1
25	WX-0246	Grease Nipple	2
26	WX-1853	Left Hand Axle Bracket	1
27	WX-B5351	Tube	2
28	WX-B5551	Tyre	2
29	WX-1352	Wheel	2
30	WX-1538	Wheel Bearing Inner	2
31	WX-1638	Wheel Bearing Outer	2
32	WX-0645	Seal	2
33	WX-4951	Hub Cap	2
34	WX-2801	Axle Bracket Fastening Set	1
35	WX-7701	Cover Fastening Set	2
36	WX-8379	Mainframe	1
37	WX-3134	Belt	2
38	WX-6857	Motor Packer Plate	1
39	WX-9757	Mount Plate 17½ hp	1
39	WX-11157	Mount Plate 20 hp	1
40	WX-6957	Engine Bracket	1
41	WX-6001	Mounting Plate Fastening Set	1
42	WX-18080	Drawbar Bracket	1
43	WX-1929	Bolt Plate	1
44	WX-18001	Drawbar Fastening Set	1
45	WX-2329	Adjuster	1
46	WX-2401	Swivel Hitch Fastening Set	1
47	WX-12156	Swivel Hitch	1
48	WX-2356	Ball Hitch	1
49	WX-9501	Ball Hitch Fastening Set	1

PARTS ILLUSTRATION - FRONT AND REAR WHEEL OPTIONS - PLATE 3

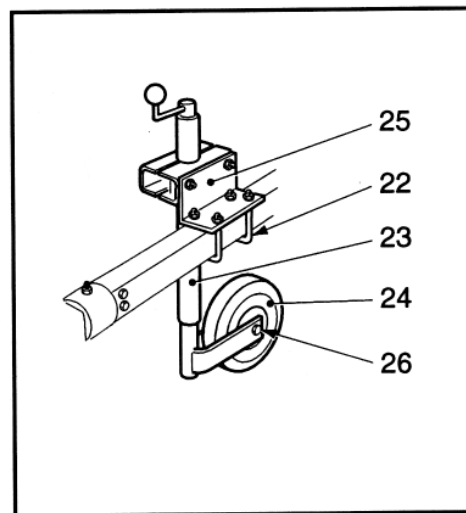
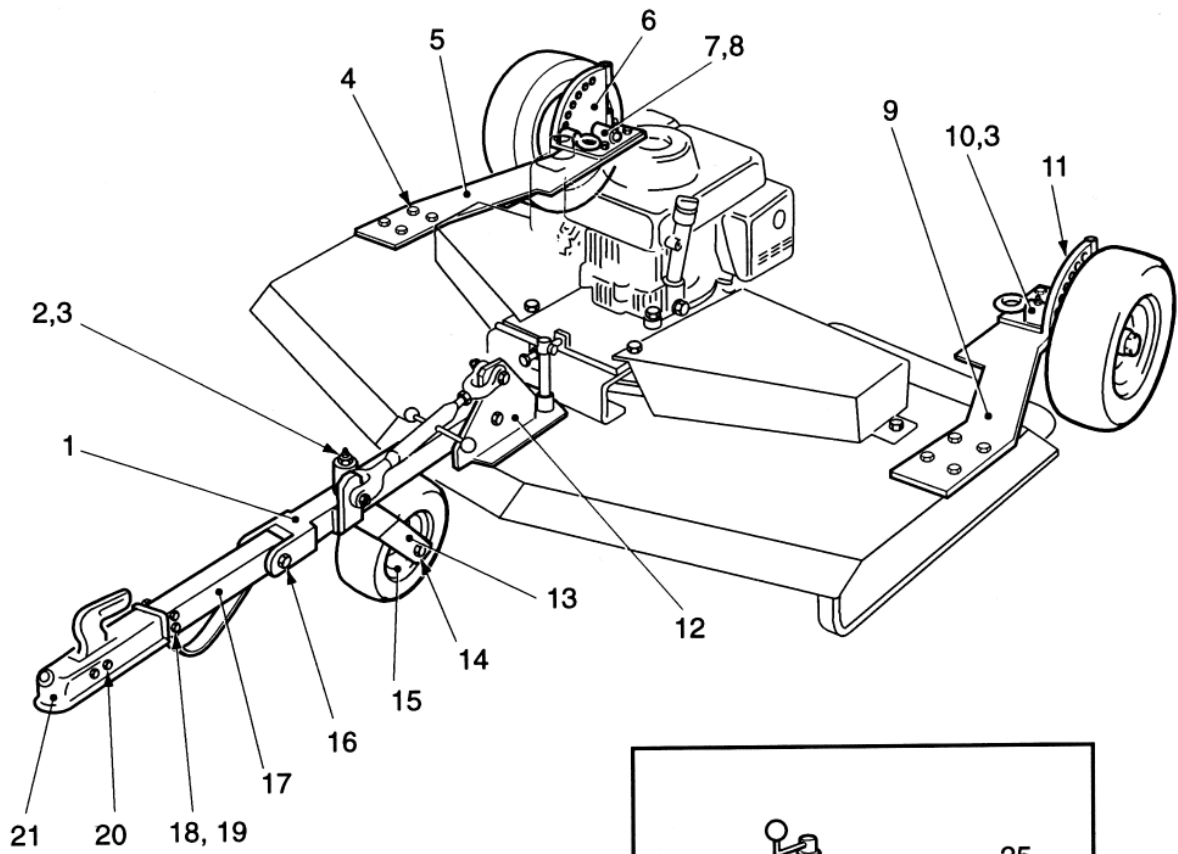


PLATE 3

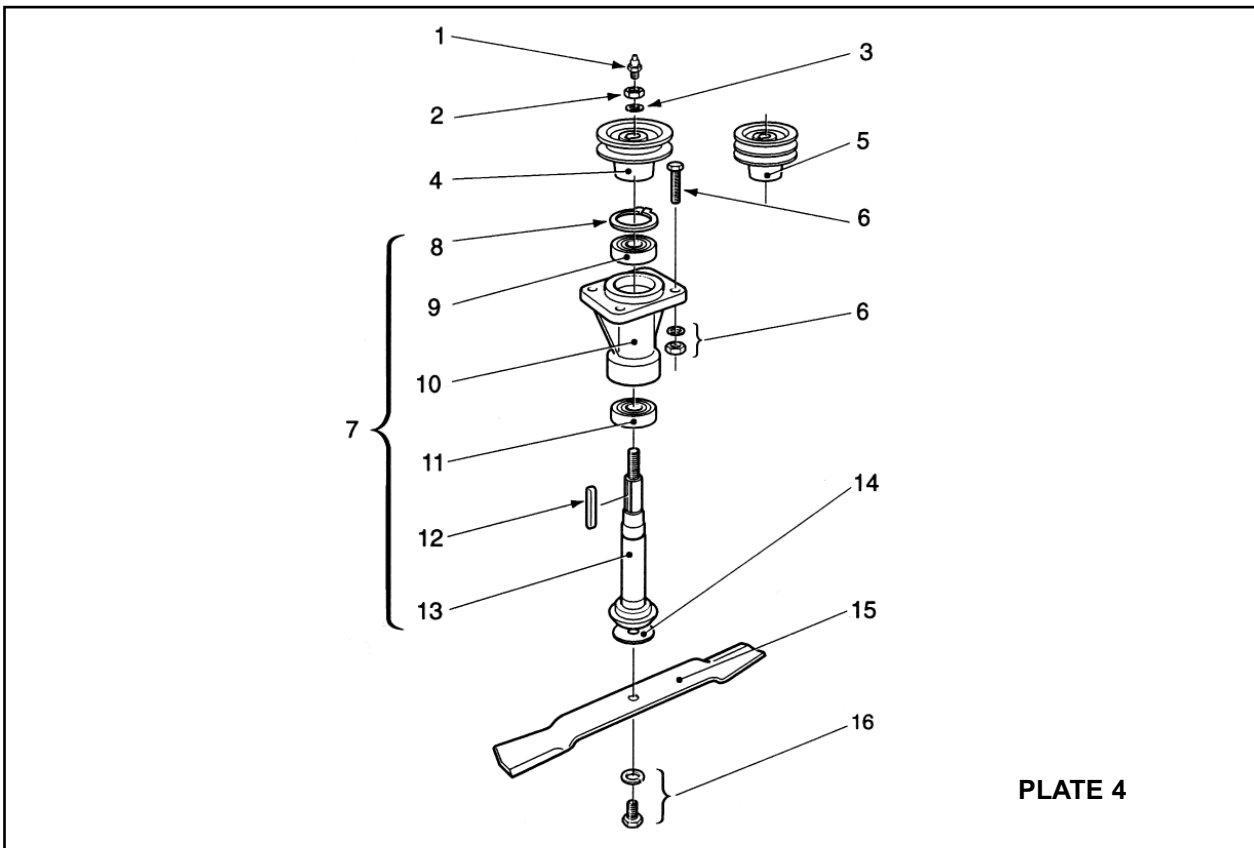
PARTS LIST - FRONT AND REAR WHEEL OPTIONS - PLATE 3

Item No.	Part No.	Description	Qty. per Machine
1	WX-13980	'A' Section Drawbar	1
2	WX-7102	Wheel Fork Fastening Set	1
3*	WX-0246	Grease Nipple	2
3**	WX-0246	Grease Nipple	1
4	WX-17601	Rear Wheel Fastening Set	2
5*	WX-4653	Right Hand Rear Wheel Bracket	1
6*	WX-1453	Right Hand Axle Bracket	1
7*	WX-1753	Wheel Pivot Bracket	1
8*	WX-1520	Special Washer	2
9*	WX-4553	Left Hand Rear Wheel Bracket	1
10*	WX-1853	Left Hand Wheel Pivot Bracket	1
11*	WX-1553	Left Hand Axle Bracket	1
12	WX-13580	Drawbar Bracket	1
13	WX-11151	Wheel Fork	1
14	WX-7402	Wheel Axle	1
15	WX-3452	Wheel	1
16	WX-22201	Drawbar Joint Bolt	1
17	WX-13280	'B' Section Drawbar	1
18	WX-22401	Swivel Fastening Set	1
19	WX-12156	Swivel Hitch	1
20	WX-9501	Ball Hitch Fastening Set	1
21	WX-2356	Ball Hitch	1
22*	WX-7002	U Bolt Fastening Set	1
23*	WX-10956	Jockey Wheel Assembly	1
24*	WX-10956A	Spare Wheel	1
25*	WX-11056	Jack Bracket	1
26*	WX-25601	Wheel Fastening Set	1

* Rear Wheel Option

** Front Wheel Option

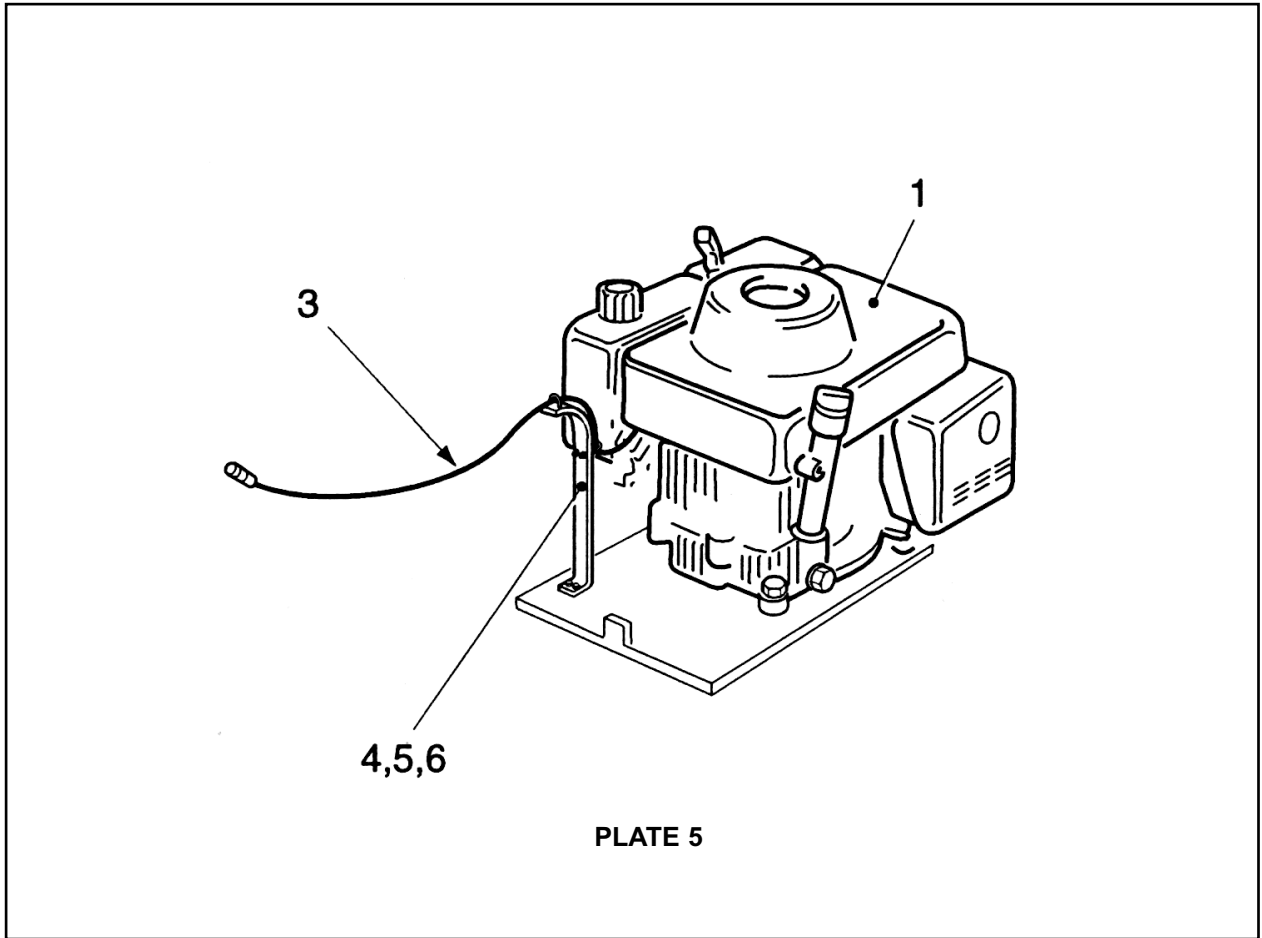
PARTS ILLUSTRATION - SPINDLE ASSEMBLY - PLATE 4



PARTS LIST - SPINDLE ASSEMBLY - PLATE 4

Item No.	AR120 Part No.	QTY	AR150 Part No.	QTY	AR180 Part No.	QTY	Description
1	WX-0246	3	WX-0246	3	WX-0246	3	Grease Nipple
2	WX-0714	3	WX-0714	3	WX-0714	3	Spindle Top Nut
3	WX-0915	3	WX-0915	3	WX-0915	3	Spindle Top Washer
4	WX-4262	2	WX-4062	2	WX-4062	2	1 Row Pulley
5	WX-4362	1	WX-4162	1	WX-4162	1	2 Row Pulley
6	WX-2801	3	WX-2801	3	WX-2801	3	Fastening Set
7	WX-5966B	3	WX-5966B	3	WX-5966B	3	Spindle Assembly
8	WX-1722	3	WX-1722	3	WX-1722	3	Circlip
9	WX-0838	3	WX-0838	3	WX-0838	3	Spindle Top Bearing
10	WX-5966	3	WX-5966	3	WX-5966	3	Spindle Housing
11	WX-0938	3	WX-0938	3	WX-0938	3	Spindle Bottom Bearing
12	WX-0147	3	WX-0147	3	WX-0147	3	Key
13	WX-6066	3	WX-6066	3	WX-6066	3	Spindle
14	WX-0220	3	WX-0220	3	WX-0220	3	Washer
15	WX-4670	3	WX-4770	3	WX-8870	3	Blade
16	WX-0106	3	WX-0106	3	WX-0106	3	Fastening Set

PARTS ILLUSTRATION - AR120 & AR150 ENGINE OPTIONS - PLATE 5



PARTS LIST - AR120 & AR150 ENGINE OPTIONS - PLATE 5

Item No.	AR 120 Part No.	Qty	AR 150 Part No.	Qty	Description
1	WX-0960	1	-	-	Engine 11 hp Honda
	WX-1160	1	WX-1160	1	Engine 13 hp Honda
	WX-5160	1	WX-5160	1	Engine 12½ hp B & S
2 N/S	WX-4960	1	WX-4960	1	In-Line Fuel Cut-Off Valve
3	WX-6756	1	WX-6756	1	Throttle Cable
4	WX-18380	1	WX-18380	1	Throttle Cable Support
5	WX-6656A	2	WX-6656A	2	'U' Clamp
6	WX-27901	1	WX-27901	1	Fastening Set

PARTS ILLUSTRATION - AR150 & AR180 ENGINE OPTIONS - PLATE 6

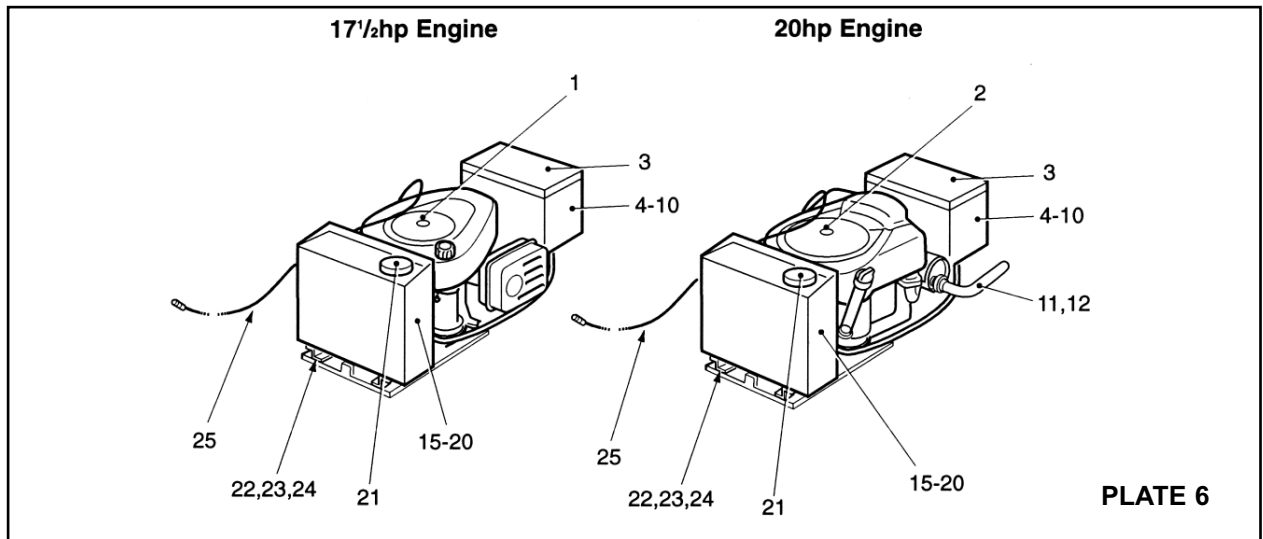
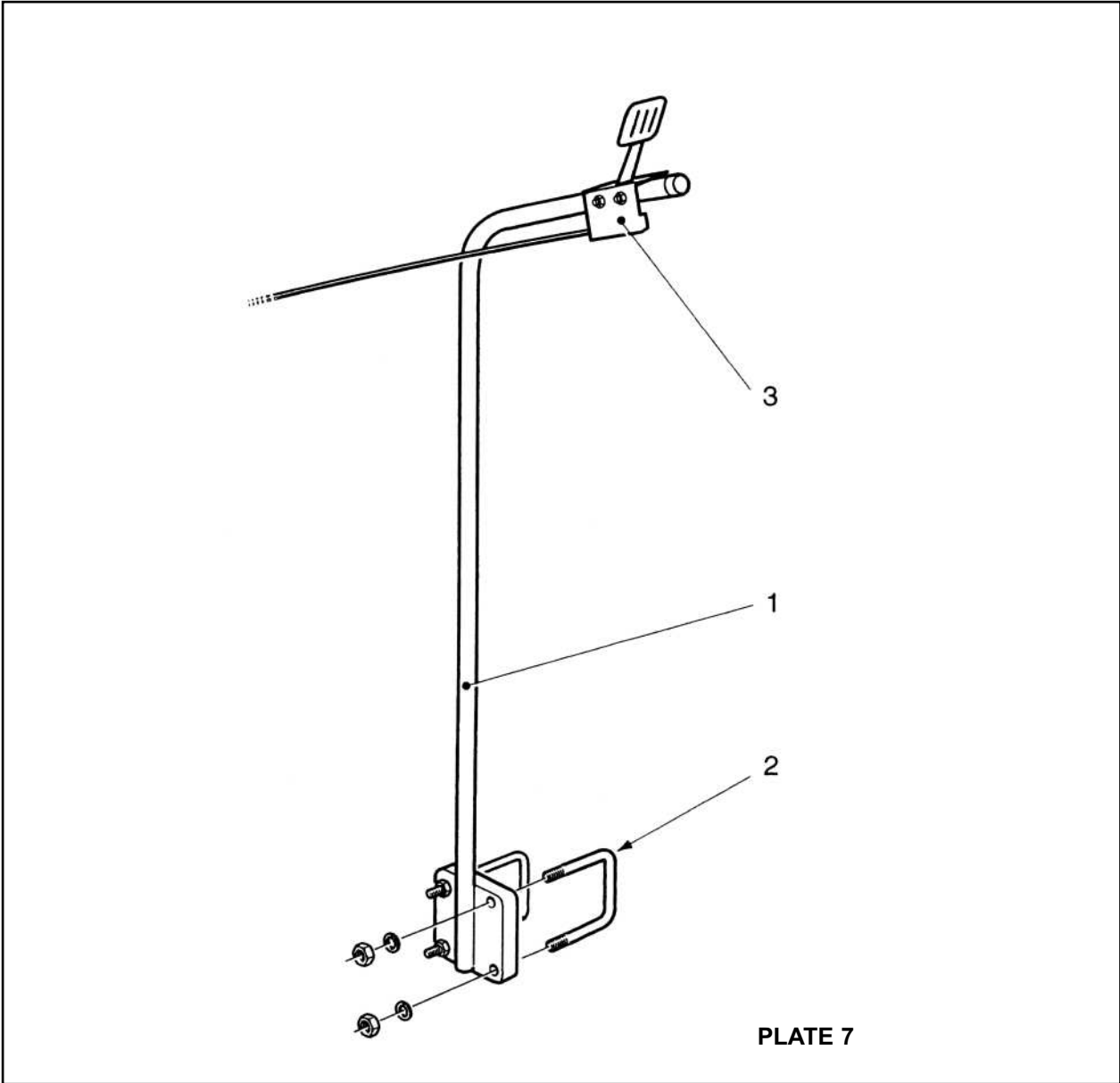


PLATE 6

PARTS LIST - AR150 & AR180 ENGINE OPTIONS - PLATE 6

Item No.	AR150 Part No.	QTY	AR180 Part No.	QTY	Description
1	WX-2860	1	WX-2860	1	Engine 17½ hp B & S
	-	-	WX-3060	1	Engine 20 hp B & S
3	WX-4876	1	WX-4876	1	Battery Cover
4	WX-4776	1	WX-4776	1	Battery Box
5	WX-0460	1	WX-0460	1	Battery
6	WX-4976	1	WX-4976	1	Battery Clamp
7	WX-2860A	1	WX-2860A	1	Wiring Harness
8	WX-4560	1	WX-4560	1	Heat Barrier
9	WX-3160	1	WX-3160	1	Solenoid
10	WX-4460	1	WX-4460	1	Key - Switch
11	-	-	WX-4760	1	Exhaust Pipe (20 hp Engine Only)
12	-	-	WX-5060	1	Exhaust Clamp (20 hp Engine Only)
13 N/S	WX-4660	1	WX-4660	1	Heat Shield Sleeve
14 N/S	WX-4960	1	WX-4960	1	In-Line Fuel Shut-off Valve
15	WX-4676	1	WX-4676	1	Fuel Tank
16	WX-0621	2	WX-0621	2	Hose Clip
17	WX-9857	1	WX-9857	1	Elbow
18	WX-9957	1	WX-9957	1	Hosetail
19	WX-10057	1	WX-0057	1	Plug
20	WX-11657	1	WX-11657	1	Nylon Washer
21	WX-4676B	1	WX-4676B	1	Filler Cap
22	WX-12057	1	WX-12057	1	Right Hand Fuel Tank Mounting Bracket
23	WX-12157	1	WX-12157	1	Left Hand Fuel Tank Mounting Bracket
24	WX-25801	1	WX-25801	1	Mounting Bracket Fastening Set
25	WX-6756	1	WX-6756	1	Cable Assembly Only

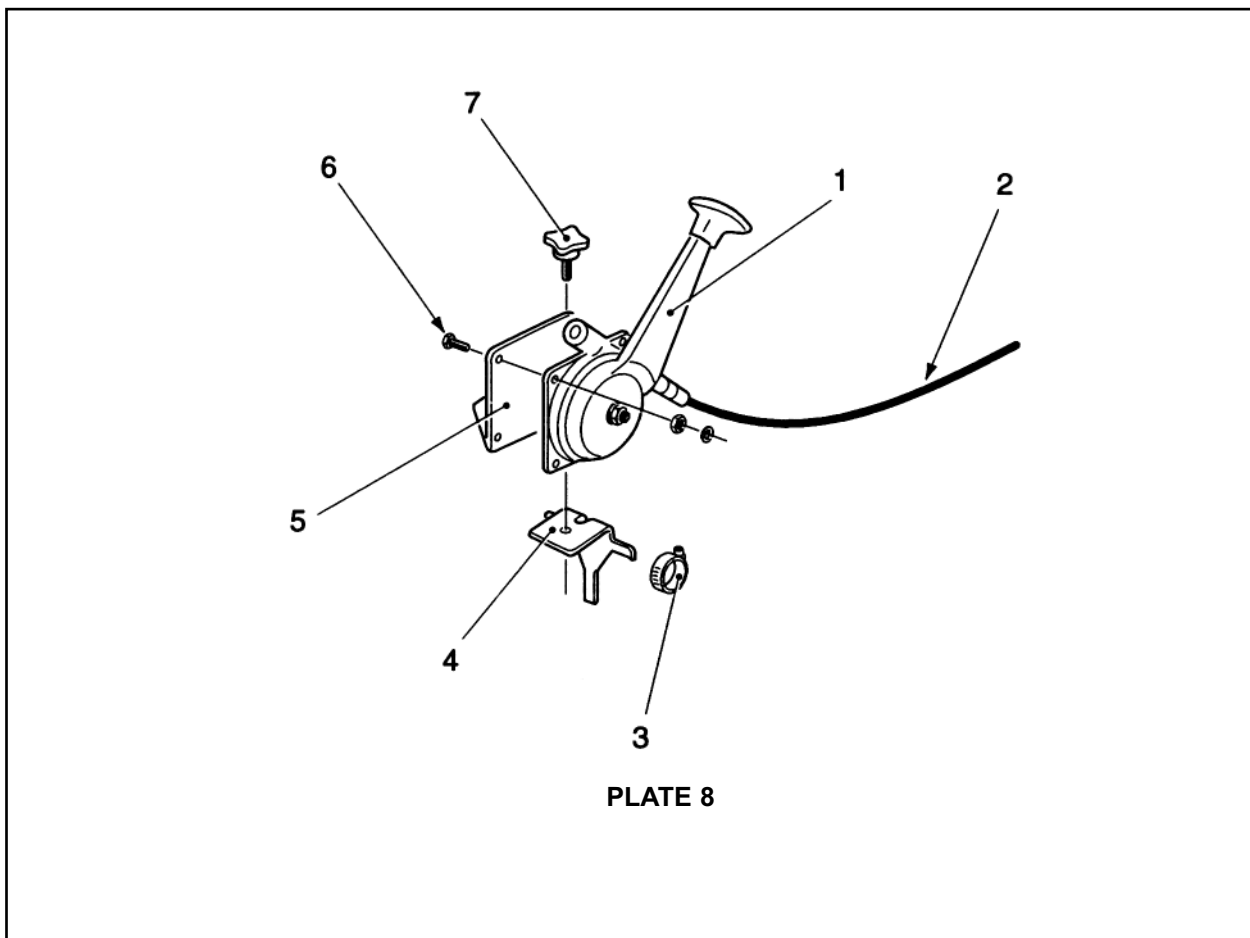
PARTS ILLUSTRATION - CONTROL ARM OPTION - PLATE 7



PARTS LIST - CONTROL ARM OPTION - PLATE 7

Item No.	Part No.	Description	Qty. per Machine
1	WX-12480	Control Arm	1
2	WX-7002	'U' Bolt	2
3	WX-6756	Throttle / Cable	1

PARTS ILLUSTRATION - CHOKE ASSEMBLY - PLATE 8



PARTS LIST - CHOKE ASSEMBLY - PLATE 8

Item No.	Part No.	Description	Qty. per Machine
1	WX-12356	Choke Assembly Complete	1
2	WX-12356C	Cable Only	1
3	WX-7702	Jubilee Clip	3
4	WX-5258A	Fixed Bracket	1
5	WX-5258B	Handle Bracket	1
6	WX-25701	Choke Assembly Fastening Set	1
7	WX-2439	Handwheel	1



Certificate of CE Conformity

Machine Model:

AR120 / 150 / 180

Description:

Rotary Mower

*I hereby certify that the machine detailed hereon
conforms to:*

**European Directives 2008/42/EC
Supply of Machinery Regulations 2008
As amended 91/368EEC – 93/44EEC – 93/68EEC
HSE AIS 33**

Signed:

A handwritten signature in black ink, appearing to be 'R. J. ...', is written over a dotted line that extends to the right.

Quality Manager

Date:

NOVEMBER 2010

Wessex International

Charlton House, Caxton Place, East Portway Industrial Estate, Andover, Hampshire SP10 3QN
Telephone: 01264 345870 Fax: 01264 345 880

www.wessexintl.com



Wessex International
Charlton House, Caxton Close, East Portway Industrial Estate, Andover Hampshire. SP10 3QN
Telephone: 01264 345870 Fax 01264 345880
e-mail: sales@wessexintl.com

www.wessexintl.com
