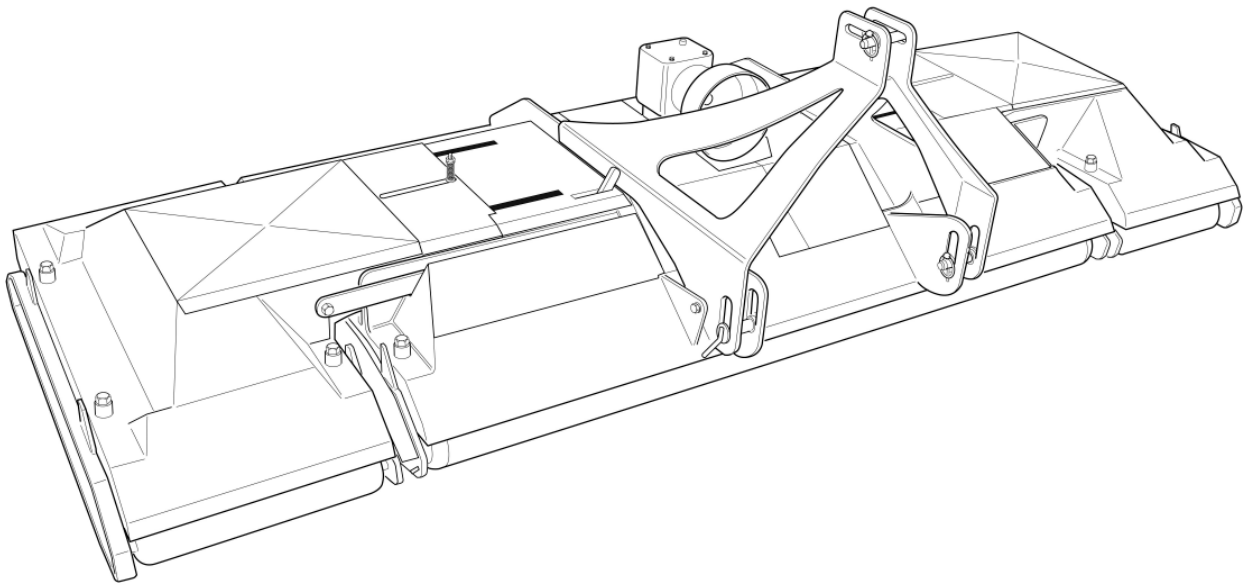




Operation Manual and Parts Book

Wessex ProLine RMX480 Roller Mower And Fast Tow
PG1000 Proglider Chassis
From Serial Number 120524



Product Code: L2023



Issue July 2012

CONTENTS

Welcome to your new Wessex Product	2
Safety Decals	3,4
Important Safety Warnings	5
Warranty	6
Linking up to the Tractor	7
Using the Mower	7
Altering the Cutting Height / Maintenance	8
Belt Adjustment / Lubrication	9
Troubleshooting / Winter Storage	10
Belt Changing Sequence	11
Parts Illustration - Mainframe Assembly	12
Parts List - Mainframe Assembly	13, 14
Parts Illustration / Parts List - Wing Assembly (Rear View)	15
Parts Illustration / Parts List - Guard Set	16
Parts Illustration - Drive System	17
Parts List - Drive System	18
Parts Illustration / Parts List - Spindles Assembly	19
PTO Shaft - Operation and Maintenance	20, 21
Specification	22
Notes	23
Hitching Up When fitted with ProGlider Wheel Gear	24
Operating The Machine	24
Travelling on the Public Highway	24
Maintenance / Winter Storage	25
Parts Illustration - ProGlider	26
Parts List - ProGlider	27,28
Safety Training Induction	29
Daily Inspection Record	30
CE Certificate	31

WELCOME TO YOUR NEW WESSEX PRODUCT

Thank you for purchasing a Wessex product. As a Wessex customer, you now number among the most important people of our business and we will endeavour to give you the best service available through our dealer network.

Please read this Manual carefully and familiarise yourself and other persons that will be using the machine with its contents, to ensure the optimum performance and working life of your machine. It is advisable that a copy of this Manual is kept in the workshop and one copy with the machine. Further copies are available through your dealer.

On delivery, your dealer should go through the workings of the machine with you, explaining the setting up procedures, all of which are contained in this manual for further reference. The Warranty Registration Form must also be completed and returned to us **within 7 days of delivery** in order to validate the Warranty.

**PLEASE READ THE FOLLOWING PAGES CAREFULLY BEFORE USING YOUR MACHINE
AND KEEP THIS MANUAL IN A SAFE PLACE.**

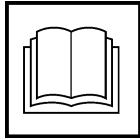


**THIS SAFETY SYMBOL IS TO ALERT OPERATORS OF A HAZARD
THAT MAY RESULT IN INJURY.
ALWAYS FOLLOW INSTRUCTIONS CAREFULLY**

SAFETY DECALS



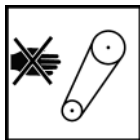
- GB **ATTENTION** Description of pictograms.
 F **ATTENTION** Description des pictogrammes.
 D **ACHTUNG** Beschreibung von Piktogrammen.



- GB Read Operating manual before use.
 F Lire le Manuel d'utilisation avant l'utilisation.
 D Vor Benutzung Betriebsanleitung lesen.



- GB Ear defenders must be worn.
 F Porter des protections d'oreilles.
 D Gehörschutz muss getragen werden.



- GB Never remove guards or attempt adjustment until rotor has stopped.
 F Ne jamais retirer les protections ni tenter des ajustements si les rotors sont en mouvement.
 D Niemals Schutzvorrichtungen abnehmen oder eine Einstellung versuchen, bevor der Rotor stillsteht.



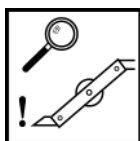
- GB Bystanders must be at least 20 metres from machine range of action.
 F Les personnes présentes doivent s'écarter d'au moins 20 mètres du rayon d'action de la machine.
 D Umstehende müssen mindestens 20 m vom Wirkungsbereich der Maschine entfernt sein.



- GB Stand clear. Flying objects possible.
 F S'éloigner ! Possibilité d'objets volants.
 D Zurückbleiben! Herumfliegende Objekte möglich.



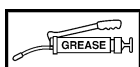
- GB Lift Machine before turning
 F Soulever la machine avant les virages.
 D Die Maschine vor dem Wenden anheben.



- GB Examine blades regularly. The operator is responsible for machine damage caused by unbalanced rotors.
 F Examiner les lames régulièrement. L'opérateur est responsable des dommages à la machine provoqués par des rotors mal équilibrés.
 D Die Messer regelmäßig untersuchen. Der Bediener ist für Maschinenschäden verantwortlich, die durch unwuchtige Spindeln entstehen.



- GB Keep hands and feet clear
 F Ne pas approcher les mains et les pieds.
 D Hände und Füße fernhalten.

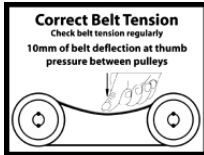


- GB Grease points
 F Points de graissage.
 D Schmierpunkte.

SAFETY DECALS



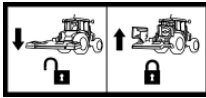
- GB Lifting Point
F Point de levage.
D Hebepunkt.



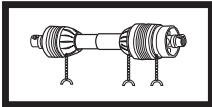
- GB CORRECT BELT TENSION: Check belt tension regularly: 10mm of belt deflection at thumb pressure between pulleys.
F TENSIONNEMENT CORRECT DE LA COURROIE : Contrôler le tensionnement régulièrement : la déflexion de la courroie sous la pression du pouce entre les deux poulies doit être de 10 mm.
D KORREKTE RIEMENSPIANNUNG: Riemenspannung regelmäßig überprüfen: 10 mm Eindrücktiefe bei Daumendruck zwischen Riemenscheiben.



- GB **IMPORTANT:** Do not operate with the wings in the upright position.
F **IMPORTANT:** Ne faites pas fonctionner avec l'aile élevée.
D **WICHRIG:** Niemals arbeiten mit nach oben geöffneten Seiten.



- GB Always lock wings up when travelling on the highway.
F Toujours verrouiller les ailes en place lorsque vous voyagez sur l'autoroute.
D Immer sperren Flügel dich bei Fahrten auf der Autobahn.



- GB Safety Chains must be anchored tightly. Never allow chains to wrap round PTO shaft. Grease PTO shaft regularly.
F Chaînes de sécurité doit être ancré solidement. Ne laissez jamais les chaînes à entourer le transmission. Régulièrement graisse le transmission.
D Sicherheitsketten müssen fest verankert sein. Lassen Sie niemals Ketten zu runden Zapfwelle zu wickeln. Fett Gelenkwelle regelmäßig.

IMPORTANT NOTICE

FITTING PTO SHAFT TO MACHINE & TRACTOR

- All safety chains must be anchored tight enough to allow a small amount of movement, but not enough to wrap around the P.T.O. Shaft.
- Ensure that the shaft guard is regularly greased to avoid overheating and to give lubrication.
- **Important:** Thoroughly read through the manufacturer's instruction book before using the P.T.O. Shaft.

P.T.O. Shafts are not covered by the Wessex Warranty.

- Ensure that the tractor link arms cannot come into contact with the P.T.O. Shaft when turning corners. (If possible remove the link arms from the tractor to avoid damage to P.T.O. Shaft.)

IMPORTANT SAFETY WARNINGS



Wessex machines are guarded for your protection, but you must always observe certain elementary precautions. Machines are potentially **dangerous** and should be used with the greatest respect and **ALL OPERATORS MUST** read this manual and be aware of all safety precautions.

1. **NEVER** attempt any adjustment whatsoever, unless the machine is **COMPLETELY** at a standstill.
2. **NEVER** attempt to clear any obstructions around the mower unless the machine is **COMPLETELY** at a standstill.
3. **NEVER** remove belt guards unless the machine is **COMPLETELY** at a standstill.
4. **NEVER** remove safety guards which are provided for your protection.
5. **NEVER** operate the mower with people behind, keep everybody (especially children and animals) at a safe distance, **minimum 20 metres**.
6. Stand well back from the machine when cutters are spinning.
7. Regularly inspect the **BLADES AND FIXING BOLTS** to ensure that they are in tip-top condition. Replace blades **IMMEDIATELY** if any signs of fracture or excess wear becomes apparent. Serious damage, which is excluded from our warranty conditions, may result from using your mower with an unbalanced rotor. When replacing blades, always fit new mounting bolts and nuts to ensure that the rotor is balanced and running smoothly.

HEALTH AND SAFETY - Noise at Work Regulations

READING AT THE OPERATORS EAR RMX 480 mower: 94 D.B.A

Depending on conditions and material being cut, this reading may alter, it is therefore advisable for users to do their own assessment.



In compliance with the above regulations, Ear Protectors must be worn when operating machinery.

WARRANTY

Your Wessex product or equipment is warranted free from defect in workmanship or manufacture for one year from date of purchase. Any parts which appear to us to be defective, either in material or workmanship shall be replaced or repaired at no cost to the purchaser, subject to the following conditions:

1. The registration card enclosed with this booklet must be returned to us within seven days of purchase.
2. Any failure in the machine should be reported in the first instance immediately to your dealer, who will act on your behalf to resolve the matter to your satisfaction.
3. The defective parts will be returned by your dealer to us, accompanied by a full statement describing the failure and the circumstances and conditions in which the failure occurred.
4. The following are specifically excluded from our terms of warranty:
 - a) Fair wear and tear, especially to belts, brushes, blades and spinners.
 - b) Damage to blades or brushes caused through incorrect positioning of the rotor (see instructions).
 - c) Damage caused by neglect or lack of lubrication.
 - d) Damage caused by misuse or abuse.
 - e) Damage caused whilst the machine is in transit.
 - f) Damage caused to the frame of the machine by running the machine with unbalanced rotors, blades or spinners.
 - g) Damage caused to the machine by use with loose nuts, bolts, screws or any other type of fittings.
5. The warranty is for the benefit of the first user only.
6. Wessex International decisions will be final and binding.

Note:

It is recommended that every machine is inspected after one hour of operation to check that all nuts, bolts, screws or any other types of fixings are tight and any loose fixings or components should be rectified as appropriate.

Further inspections should be carried out at regular intervals thereafter.

LINKING UP TO THE TRACTOR

1. Reverse your tractor up to the machine and connect the lower links, left hand first to the link pins on the machine, securing with linchpins. Adjust the right hand tractor lift arm to ensure that the mower is level from side to side.

Never allow anyone to stand between the tractor and the mower.

2. Connect the top link. The top link pin must be situated in the hole for transport, but in the slot when mowing as this will allow the machine to follow the ground contours well.
3. Connect the P.T.O. shaft ensuring that the shaft is not too long for the tractor. If necessary, the P.T.O. shaft may need to be shortened, (see instructions on pages 19 and 20). Once the P.T.O. is attached clip the P.T.O. shaft guard chains to the lugs on the plastic bucket guard.
4. Tighten tractor check chains to prevent sideways movement of the mower.
5. Ensure that the top link pin is in the centre of the slot on level ground for mowing and in the hole for transport.
6. Connect the hydraulic pipe for the wing lifting cylinders.

USING THE MOWER

Having linked your RMX mower up to the tractor and connected up the P.T.O. shaft and the hydraulic pipe for the wing cylinders, ensure that the mower is not too heavy for the tractor, if so you may need to fit front weights to the tractor.

When you first receive the mower, the wings will be locked in the transport position. Before lowering the wings ensure that there are no bystanders within 3 metres. Then take the weight off the wings by lifting to the up position on the tractors hydraulic controls, then release the wing locking catches by shifting them to the mowing position.

Slowly lower the wings down by using the tractors hydraulic controls. The correct P.T.O. speed is 540 RPM. Never use the mower in P.T.O. speeds in excess of this.

Ensure that there are no objects underneath the mower deck and that there are no bystanders within 20 metres behind the mower before starting the mower up especially children and animals.

Having set the RMX mower up in accordance with the above instructions engage the P.T.O. and select a low forward speed and gently move forward. You will establish the optimum forward speed for your conditions by experience, but on regularly maintained grass you will achieve a good finish at 5-6 M.P.H.

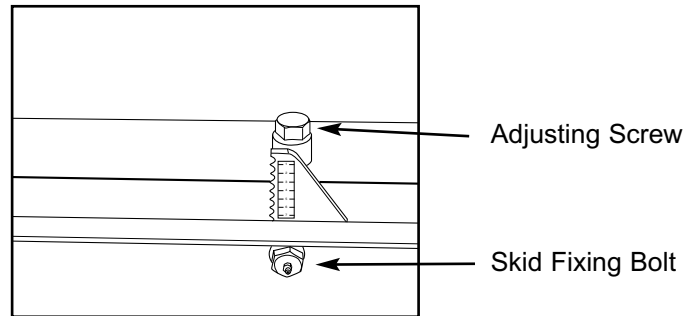
When mowing it is important that you lift the machine on the tractor link arms when turning sharply. When planning your cutting pattern ensure that you keep the turning whilst mowing to a minimum. Turning sharply with the mower on the ground will damage the roller bearings.

When mowing always put the top link pin in the slot so that the mower will follow the ground contours well, and always put the pin into the hole for road transport.

ALTERING THE CUTTING HEIGHT

1. Lift the mower slightly off the ground on the hydraulic linkage and switch off the tractor.
2. Loosen, but do not remove the skid fixing bolts. There are two each side of the main deck and two each side of the wings.
3. Turn the adjusting screws clockwise to lower the rollers, thus increasing the cutting height, or anticlockwise to raise the rollers, thus reducing the height of cut. Ensure that all screws are adjusted by the same amount otherwise the cut will be uneven. There is a line of increments on the skid to assist in checking for even adjustment.

4. Tighten all skid fixing bolts.
5. Re-adjust the top link so that then the machine is on level ground the pin is in the centre of the slot.



MAINTENANCE

To keep your RMX Roller Mower in excellent working condition we recommend that you follow this maintenance programme:-

REGULARLY:-

- Lubricate your RMX as indicated in this manual.
- Check all drive belts and replace if cut, frayed or worn.
- Inspect all blades regularly and replace any that are badly worn, chipped or broken.
- DO NOT RUN MACHINE WITH UNBALANCED ROTORS THIS WILL CAUSE DAMAGE (NOT COVERED BY WARRANTY).
- Inspect front and rear rollers and scraper wires.
- Regularly clean cut grass from under belt covers.

At the end of the grass cutting season always clean the RMX thoroughly and grease before winter storage.

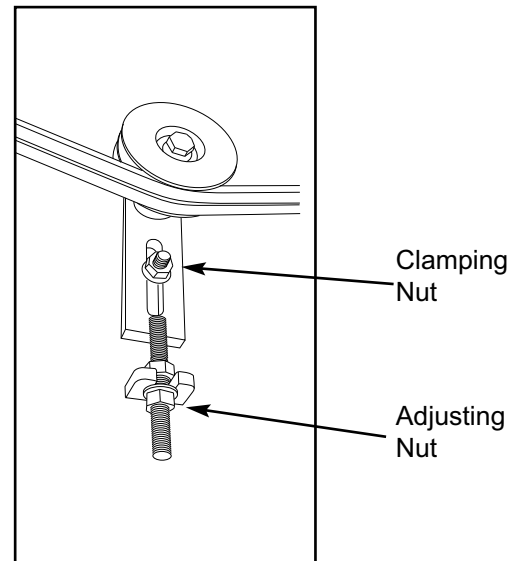
Only use genuine Wessex parts in the event of replacing worn parts. This will ensure the continued safe use of your RMX Roller Mower and the validity of your warranty.

BELT ADJUSTMENT

To check the belt tension you will need to remove some of the belt covers. The correct belt tension is approximately 10mm of belt deflection under thumb pressure halfway between the pulleys.

If the belts require tensioning simply loosen the clamping nut on the jockey tensioning brackets then adjust to correct tension.

The centre two pairs of belts, driven from the gearbox, are tensioned by loosening the clamping nuts over the slots on the gearbox mounting plate, then tension up the belts with the adjusting thread at the rear of the gearbox.



LUBRICATION

DAILY:- (Every 8-10 hours of operation).

- Grease Cutter Spindle bearings.
- Grease Roller bearings.
- Grease P.T.O. Shaft.

PERIODICALLY:- (Every 30 hours of operation).

- Grease height adjustment points.
- Grease wing pivot points.
- Grease hydraulic cylinder pivots.
- Check Gearbox oil level.
- Lubricate adjusting threads.

TROUBLESHOOTING

FAULT	CAUSE	REMEDY
Leaving wheel track uncut	1. Forward speed too fast 2. Cutting height too high	Reduce forward speed Lower cutting height
Bad quality of cut	1. Forward speed too fast 2. Excessive blade wear 3. Belts slipping	Reduce forward speed Replace blades Tighten belts
Narrow strip uncut	1. Possibly missing or broken blade	Inspect blades and replace as necessary
Excessive vibration	1. Damaged or missing blades 2. Main rotor bearing failed 3. Loose part	Inspect and replace blades Inspect bearing, replace if damaged Check all nuts and bolts are tight
Excessive scalping	1. Cutting height too low	Raise cutting height.

WINTER STORAGE

Before winter storage, the RMX 480 should be thoroughly inspected:-

- Repair or replace any worn or broken parts.
- Check oil level in the gearbox. Top up with EP90 gear oil.
- Take special care to look at the blades and the Spindle bearings.
- Remove the belts and ensure that the rotors are free-spinning.
- Make sure that the belts are in good condition before re-fitting.
- Thoroughly wash the machine to remove all oil, grease, debris and materials.
- Grease up all grease points before storage to avoid any corrosion.
- After washing off, run mower for a short time to dispel all water from bearings.

RMX 480 BELT CHANGING SEQUENCE

Changing the belt on the RMX 480 looks complicated, but if you follow the sequence it is not as complicated as it looks.

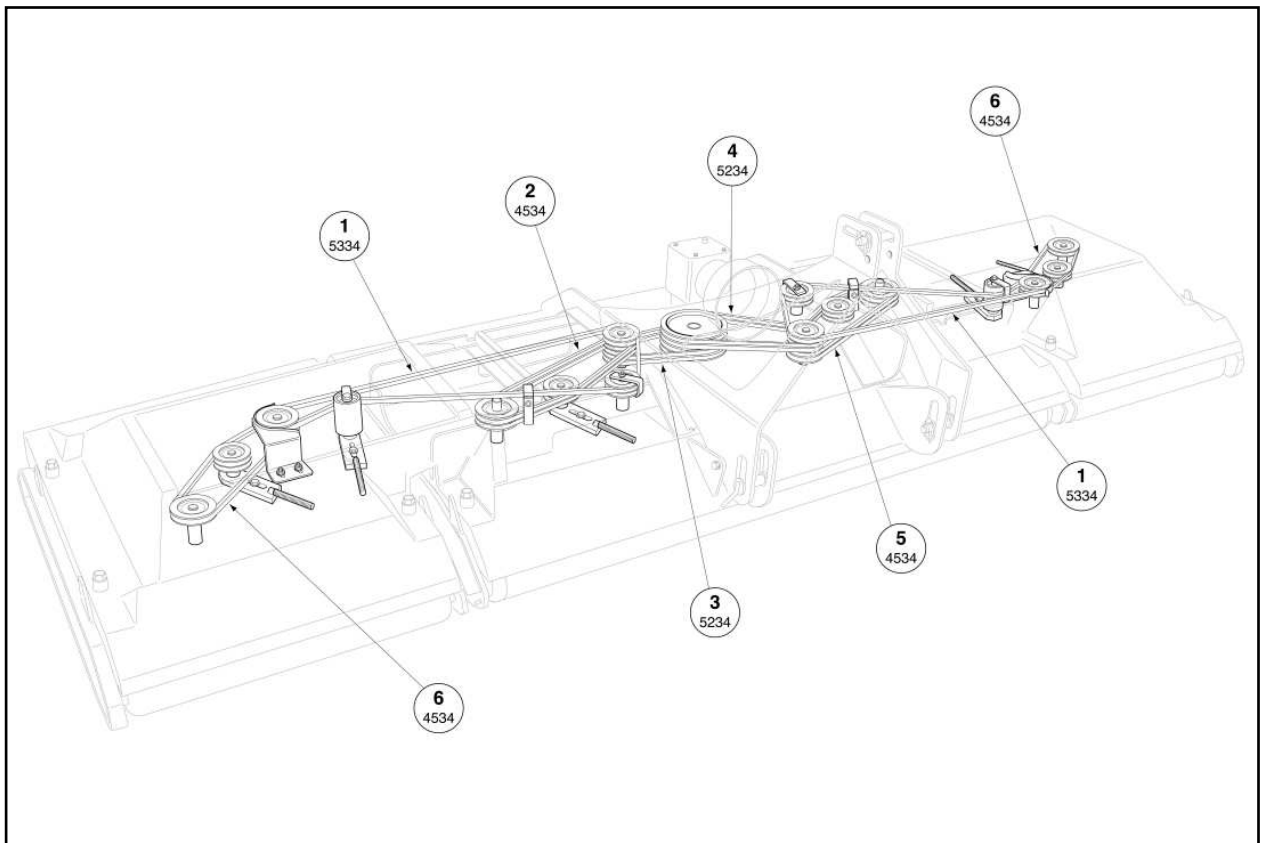
Firstly remove all belt covers (guards). When removing the guards note that the washers are a special 2 piece anti-vibration washer, take care when you put them back to put the serrated sides together.

Having removed the guards take off all belt retainers. Then loosen off all belt tensioners and remove the belts in the following sequence. (See diagram below).

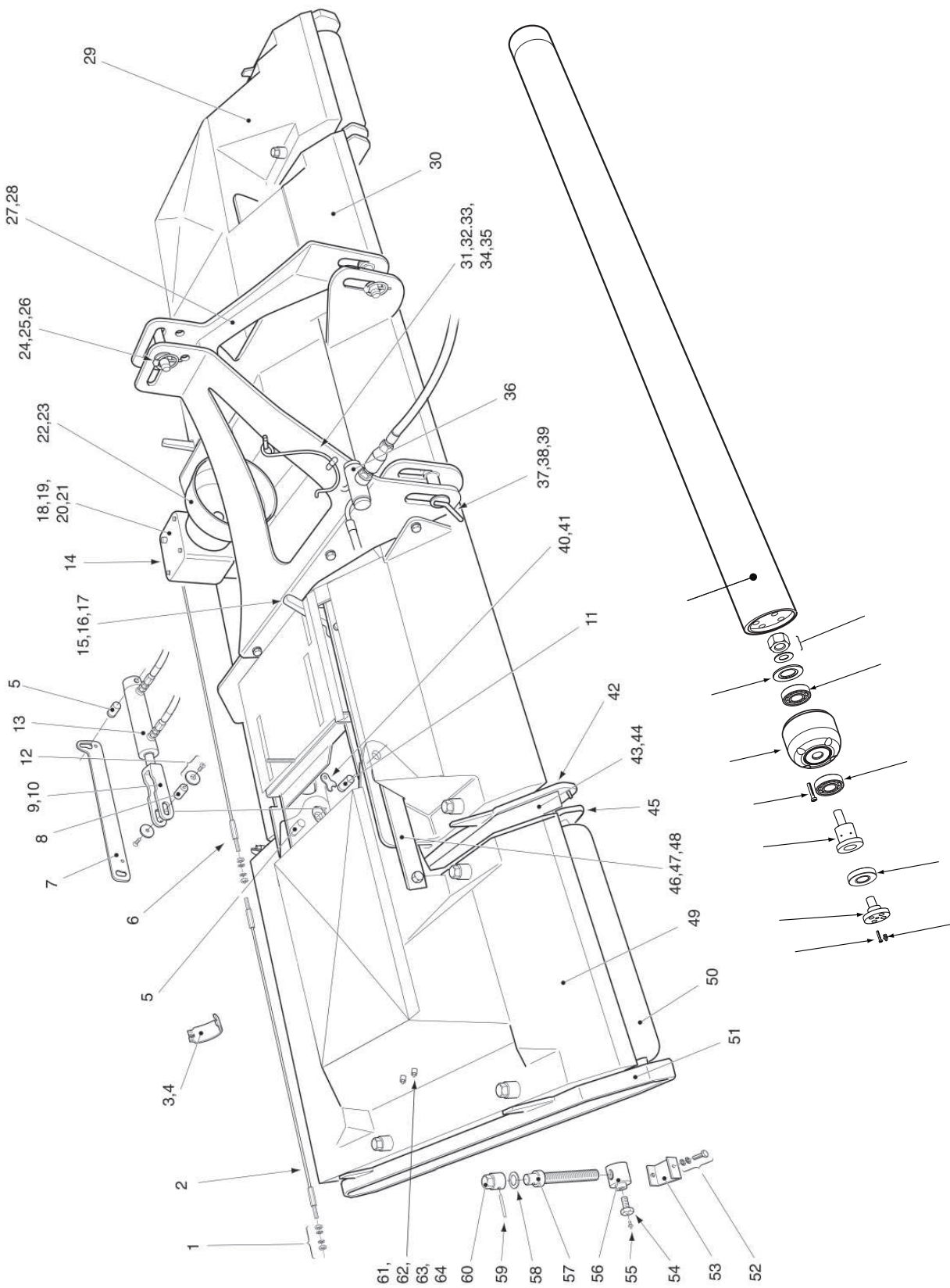
- Sets No 1 (x2)
- Set No 2
- Set No 3
- Set No 4
- Set No 5
- Sets No 6 (x2)

Having removed the belts replace them in the reverse sequence. Having replaced the belts, retention them to the correct tension giving approximately 10mm of deflection under thumb pressure half way between the pulleys.

After fitting new belts you will need to retention them after 3-4 hours work as new belts always stretch when first used.



PARTS ILLUSTRATION - RMX 480 MAINFRAME



PARTS LIST - RMX 480 MAINFRAME

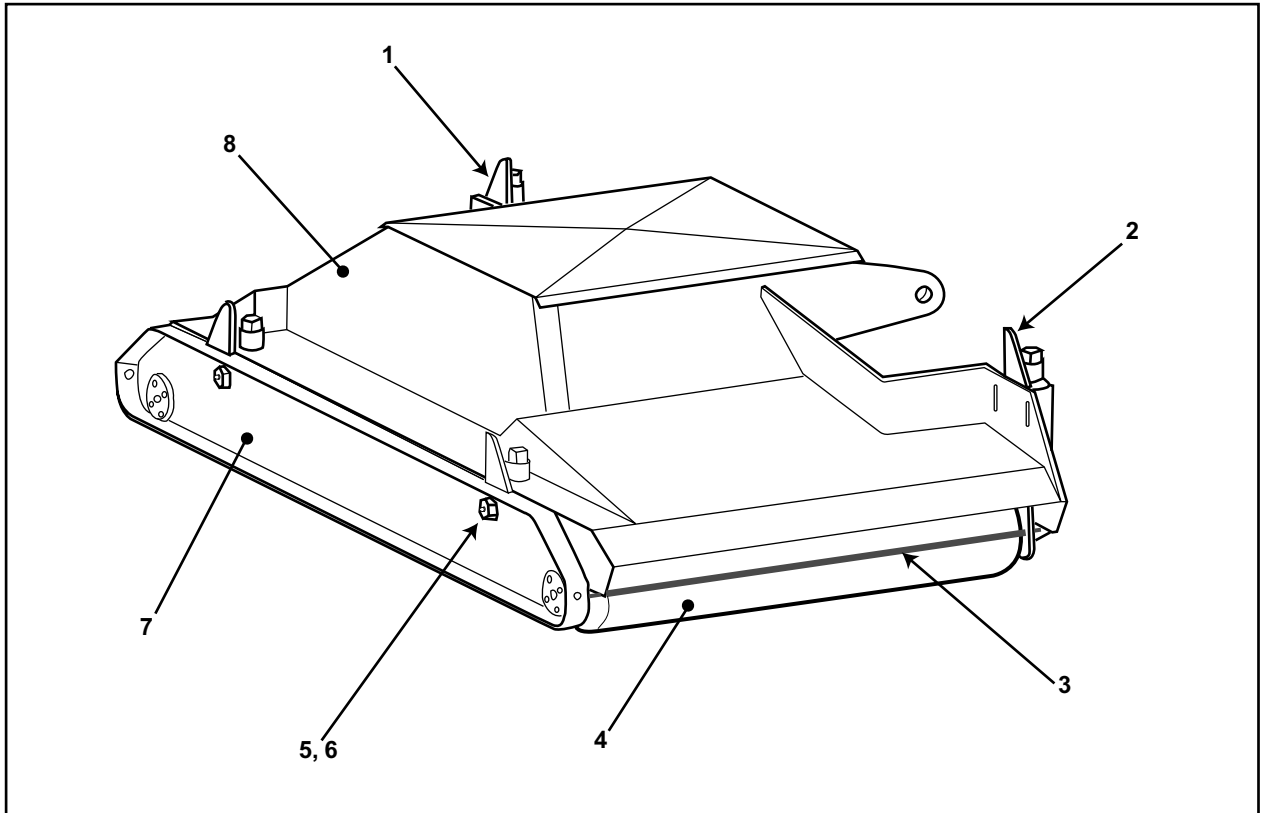
Item No.	Part No.	Description	Qty. per Machine
1	WX-4003	Cable Fastening Set	6
2	WX-7730	Wing Cable	2
3	WX-19880*	Grass Flattener	4
4	WX-4103*	Grass Flattener Fastening Set	4
5	WX-6928	Pivot Pin	4
6	WX-7230	Main Deck Cable	1
7	WX-16756	Retaining Plate	2
8	WX-17456	Clevis Pin	2
9	WX-17056	Ram Clevis	2
10	WX-3320	Nut	2
11	WX-7028	Pin	2
12	WX-16956	Retaining Washer and Fastening Set	4
13	WX-17256	Hydraulic Cylinder	2
14	WX-30201	Gearbox Adjuster	1
15	WX-7476	Safety Latch Lever	2
16	WX-4325	Catch Spring	2
17a	WX-29701	Catch Bolt	2
17b	WX-7528	Bush	2
18	WX-5857	Gearbox	1
19	WX-13157	Gearbox, Clamping Plate	2
20	WX-13257	Gearbox, Mounting Plate	1
21	WX-13357	Gearbox, Mounting Bracket	1
22	WX-1878	Cone Guard	1
23	WX-5103	Cone Guard Fastening Set	1
24	WX-0426	Top Link Pin	1
25	WX-0127	Lynch Pin	1
26	WX-2720	Top Link Washer	2
27	WX-12779	Tri-link Frame	1
28	WX-15103	Tri-link Fastening Set	1
29	WX-0471	Left Hand Wing Fabrication	1
30	WX-12679	Main Centre Deck Fabrication	1
31	WX-3925	Spring	1
32	WX-6430	P.T.O. Hook Retainer	1
33	WX-15203	P.T.O. Hook Retainer Fastening Set	1
34	WX-0229	Shackle	1
35	WX-9280	P.T.O. Hook	1
36	WX-15256	Hydraulic Kit	1
37	WX-4028	Bottom Link Pin	2
38	WX-3828	Bottom Link Bush	4
39	WX-0127	Lynch Pin	2
40	WX-9558	Bearing Pin Retainer	2

PARTS LIST - RMX 480 MAINFRAME

Item No.	Part No.	Description	Qty. per Machine
41	WX-0103	Bearing Pin Retainer Fastening Set	4
42	WX-3774	Centre Deck Roller Carrier	2
43	WX-19980	Rubber Flap	2
44	WX-4103	Rubber Flap Fastening Set	6
45	WX-4574	Wing Deck Roller Carrier	2
46	WX-9658	Wing Lock Bar	2
47	WX-4503	Wing Lock Bar Bolt - Fixed	2
48	WX-7403	Wing Lock Bar Bolt - Sliding	2
49	WX-0371	Right Hand Wing Fabrication	1
50	WX-5055	Wing Front Roller	2
51	WX-3974	Outer Roller Carrier	2
52	WX-0705	Adjuster Cover Fastening Set	12
53	WX-14456	Adjuster Cover	12
54	WX-8002	Skid Bolt (Outer Skids)	8
55	WX-0246	Grease Nipple	28
56	WX-14556	Height Adjustment Nut	12
57	WX-15956	Height Adjustment Thread	12
58	WX-2420	Nylon Washer	12
59	WX-4222	Roll Pin	12
60	WX-14756	Height Adjustment Hexagon	12
61	WX-1046	Plate Adaptor	6
62	WX-1146	Grease Nipple	6
63	WX-1446	Grease Hose (Sold Per Meter)	-
64	WX-0946	Hose Connector	6
65	WX-15603	Roller Spindle Fastening Set	12
66	WX-2655	Roller Bearing Shield	12
67	WX-15703	Roller End Fastening Set	12
68	WX-19580	Rubber Disc	12
69	WX-3955	Roller	2
70	WX-2555	Roller End	12
71	WX-1838	Roller Bearing	12
72	WX-4122	Circlip	12
73	WX-2455	Roller Spindle Outside Only F/S 12x30	4
74	WX-4055	Roller Spindle Inside Only F/S 12x35	8
N/S	WX-2281	P.T.O. Shaft Complete	1
N/S	WX-2281A	P.T.O. Shaft Cover	1

* Items 3, 4, 43 and 44 not used from serial number 120524.

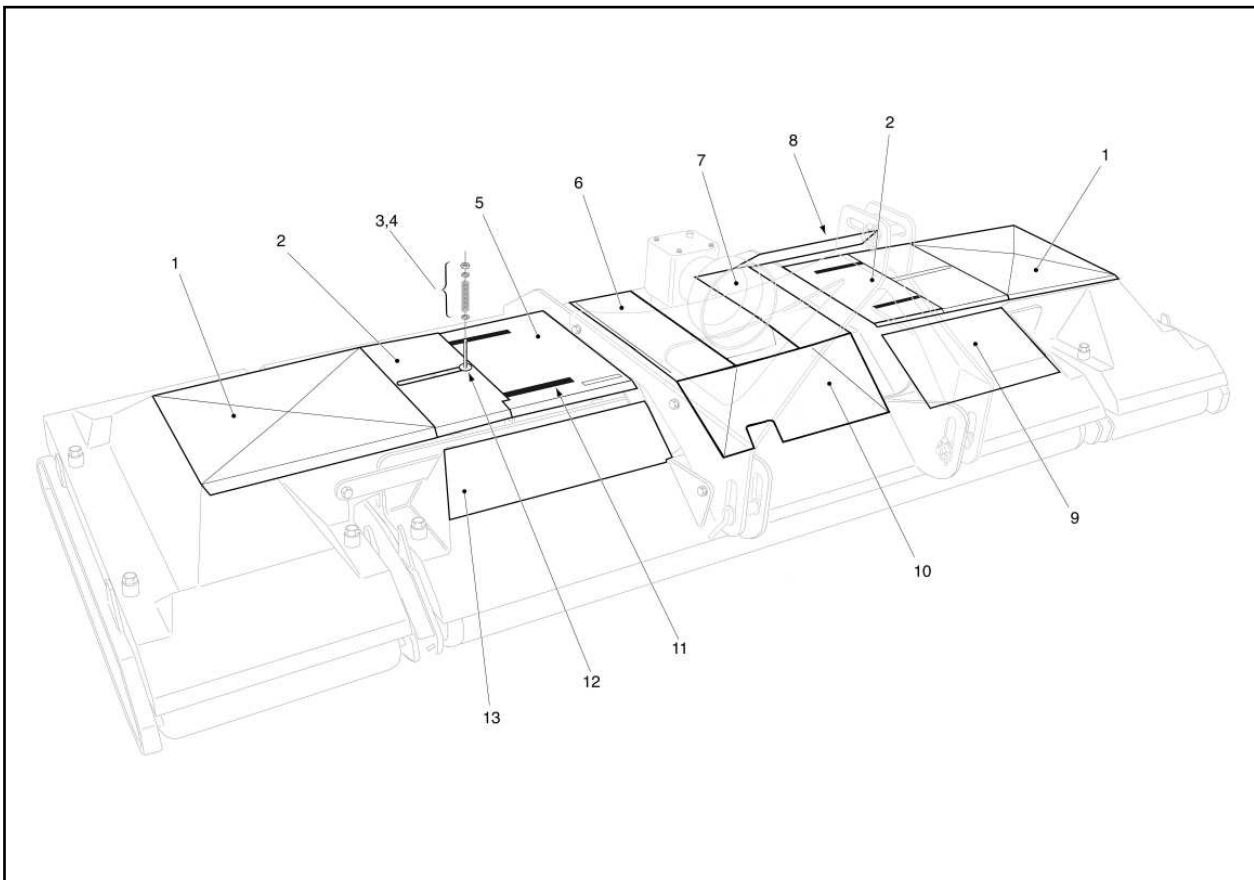
PARTS ILLUSTRATION - RMX 480 WING ASSEMBLY (Rear View)



PARTS LIST - RMX 480 WING ASSEMBLY (Rear View)

Item No.	Part No.	Description	Qty. per Machine
1	WX-4474	Right Rear and Left Front Roller Carrier	2
2	WX-4574	Rear Left and Front Right Roller Carrier	2
3	WX-7830	Roller Scraper	2
4	WX-6255	Rear Wing Roller	2
5	WX-8002	Roller Carrier Fastening Set	4
6	WX-0246	Grease Nipple	4
7	WX-4374	Outer Roller Carrier	2
8	WX-0371	Right Hand Wing Fabrication	1
8	WX-0471	Left Hand Wing Fabrication	1
N/S	WX-23580	Rubber Strip	2

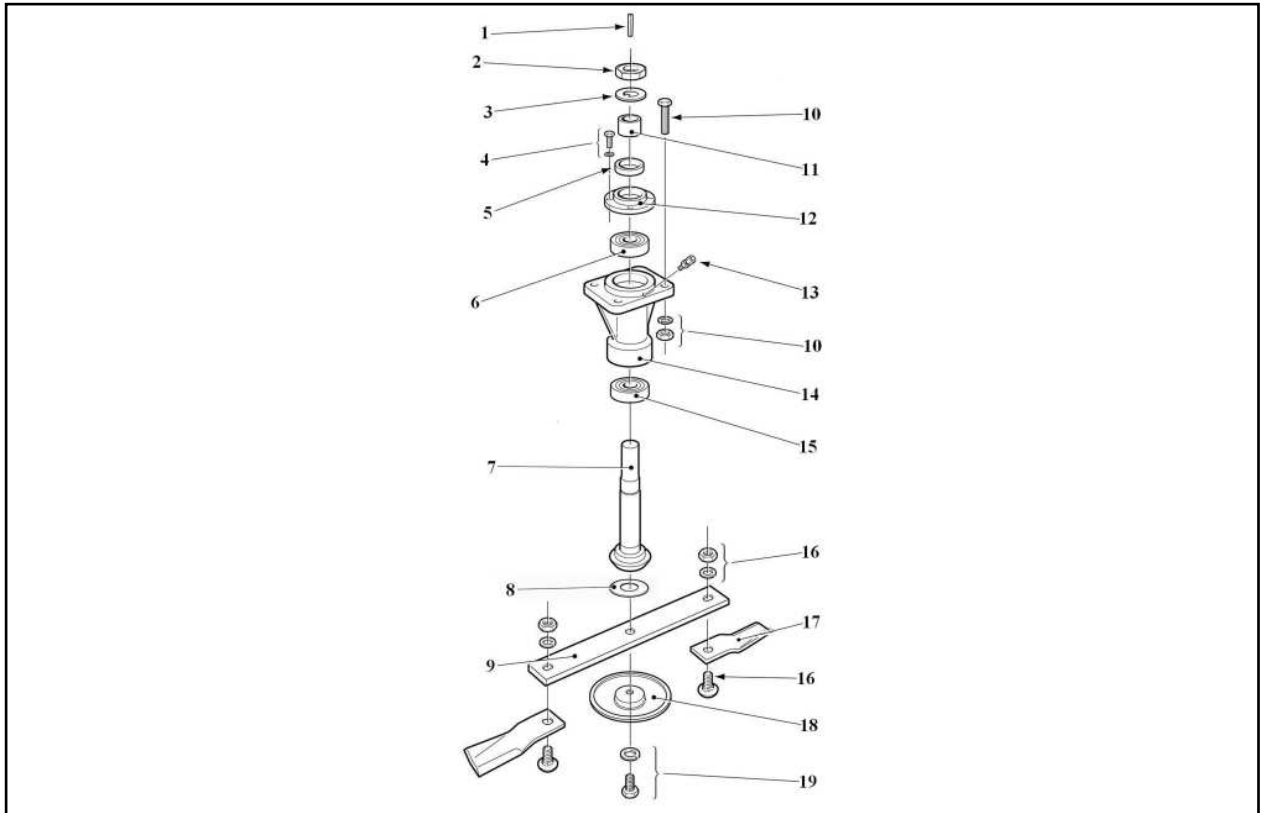
PARTS ILLUSTRATION - RMX 480 GUARD SET



PARTS LIST - RMX 480 GUARD SET

Item No.	Part No.	Description	Qty. per Machine
1	WX-15277	Wing Guard	2
2	WX-14277	Hinged Guard	2
3	WX-4225	Spring	2
4	WX-31401	Spring Fastening Set	2
5	WX-14577	Middle Right Hand Guard	1
6	WX-14877	Right Hand Rear Guard	1
7	WX-14977	Centre Left Hand Rear Guard	1
8	WX-14377	Back Guard	1
9	WX-14177	Middle Left Hand Guard	1
10	WX-15177	Centre Front Guard	1
11	WX15077	Centre Right Hand Front Guard	1
11	WX-20180	Guard Slide	4
12	WX-20080	Guard Slide Washer	2
13	WX-14677	Front Guard	1
N/S	WX-31301	Guard Fastening Set	38

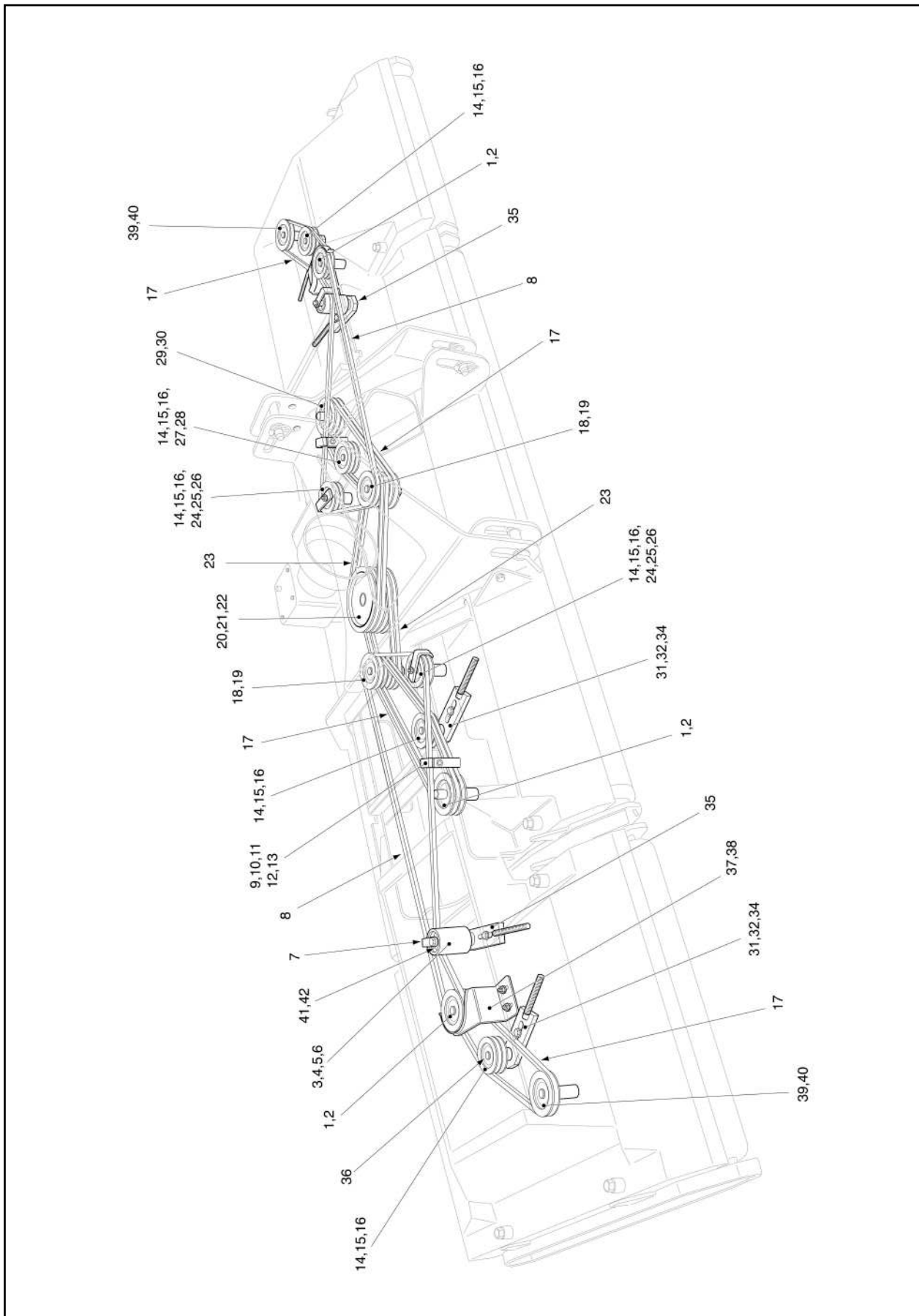
PARTS ILLUSTRATION - RMX 480 SPINDLES ASSEMBLY



PARTS LIST - RMX 480 SPINDLES ASSEMBLY

Item No.	Part No.	Description	Qty. per Spindle
1	WX-1947	Key	1
2	WX-15066	Spindle Nut	1
3	WX-0120	Tab Washer	1
4	WX-4401	Fastening Set	1
5	WX-0145	Seal	1
6	WX-0338	Top Spindle Bearing	1
7	WX-15166	Spindle	1
8	WX-0220	Fibre Washer	1
9	WX-7270	Blade Bar	1
10	WX-2701	Spindle Assembly Fastening Set	1
11	WX-14966	Spindle Spacer	1
12	WX-2166	Oil Seal Housing	1
13	WX-0346	Grease Nipple	1
14	WX-1966	Spindle Housing	1
15	WX-1238	Bottom Spindle Bearing	1
16	WX-1739	Blade Bolt	2
17	WX-10070	Gold Cut Blade	2
18	WX-7470	Anti-scalp Boss	1
19	WX-0439	Centre Blade Bolt	1

PARTS ILLUSTRATION - RMX 480 DRIVE SYSTEM



PARTS LIST - RMX 480 DRIVE SYSTEM

Item No.	Part No.	Description	Qty. per Machine
1	WX-10362	2 Row Pulley	3
2	WX-11362	Taper Lock	6
3	WX-13166	Jockey Roller Spindle	2
4	WX-6038	Jockey Roller Bearings	4
5	WX-8602	Jockey Roller Bolt	2
6	WX-13266	Roller Tensioner	2
7	WX-7576	Belt Retainer	4
8	WX-5534	Wing Belt	2
9	WX-11662	Horizontal Idler Pulley	2
10	WX-11762	Horizontal Idler Spindle	2
11	WX-7038	Bearing	4
12	WX-4622	Circlip	2
13	WX-29801	Idler Bolt	2
14	WX-10562	Idler Pulley	6
15	WX-4022	Circlip	6
16	WX-6038	Bearing	6
17	WX-4534	Belt	6
18	WX-10662	5 Row Pulley	2
19	WX-11362	Taper Lock	6
20	WX-0647	Key	1
21	WX-8662	Taper Lock	1
22	WX-11162	Gearbox Pulley	1
23	WX-4634	Belt	4
24	WX15466	Fixed Pillar	2
25	WX-7576	Belt Retainer	4
26	WX-8702	Idler Bolt	2
27	WX-15666	Idler Pillar	1
28	WX-30001	Idler Bolt	1
29	WX-11562	2 Row Pulley	1
30	WX-11362	Taper Lock	6
31	WX-15566	Idler Pillar	3
32	WX-5603	Idler Bolt	3
34	WX-13066	Tensioner Plate 16mm Threaded Hole	4
35	WX-15766	Tensioner Plate 20mm Threaded Hole	2
36	WX-2045	Oil Seal (Jockey Pulley)	2
37	WX-7676	Wing Belt Retainer	2
38	WX-5803	Wing Belt Retainer Fastening Set	2
39	WX-11262	1 Row Pulley	2
40	WX-11462	Taper Lock	2
41	WX-2145	Oil Seal (Jockey Roller)	2
42	WX-16166	Spacer	2

PTO SHAFT OPERATION AND MAINTENANCE

IMPORTANT!

P.T.O. drive shafts must only be used for their intended purpose.

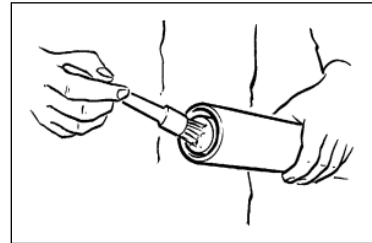
P.T.O. drive shafts are designed for specific machine types and power requirements. They must not be replaced by other models. Ensure that the P.T.O. drive shaft is securely connected.

Only use a completely protected drive system:

P.T.O. drive shaft with complete guard and complementary guard on tractor and implement. A complete guard is essential in all working positions.

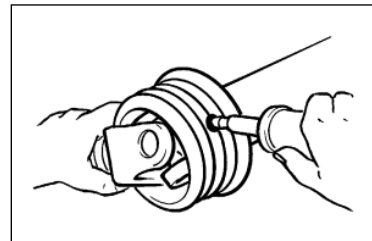
LUBRICATION

Lubricate with quality grease before starting work and every 8 operating hours.



Clean and grease the PTO drive shaft before each prolonged period of non-use.

Grease the guard tubes in winter to prevent freezing.

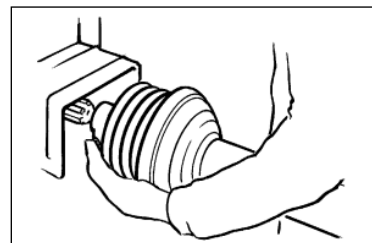


COUPLING THE PTO SHAFT

Clean and grease the PTO and PIN

Q.-d pin

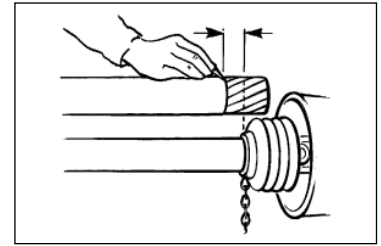
Press q.-d. pin and simultaneously push PTO drive shaft onto PTO until pin engages.



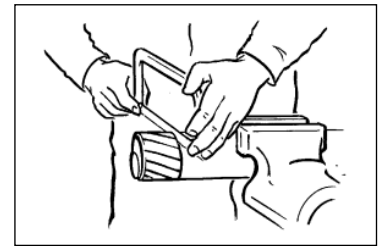
PTO SHAFT OPERATION AND MAINTENANCE

LENGTH ADJUSTMENT

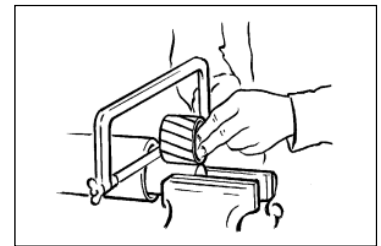
To adjust the length, hold the half-shafts next to each other in the shortest working position and mark them.



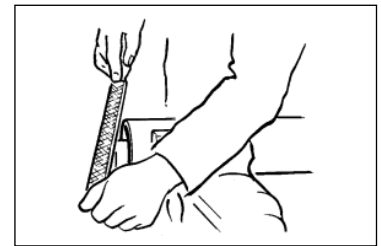
Shorten inner and outer guard tubes equally.



Shorten inner and outer sliding profiles by the same length as the guard tubes.



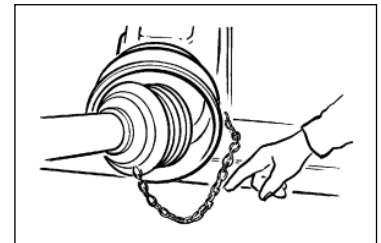
Round off all sharp edges and remove burrs.
Grease sliding profiles.



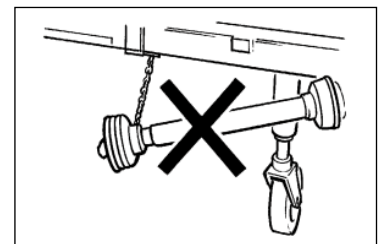
No other changes may be made to the PTO drive shaft and guard.

CHAINS

Chains must be fitted so as to allow sufficient articulation of the shaft in all working positions.



The PTO drive shaft must not be suspended from the chains!



SPECIFICATION

Proline RMX 480 Roller Mower

Model:	RMX 480
Cutting Width:	4.80m
Overall Width:	5.20m
Overall Length:	1.40m
Transport Width:	2.40m
Cutting Height Range:	10-100mm
No. of Cutting Rotors:	8
Approximate Weight:	1340kg
Power Required:	90hp

When Fitted To ProGlider:-

Approximate Weight:	1360kg
Overall Length:	3980
Highway Lighting:	Fitted
Tyre Pressure:	3.9 Bar
Maximum Road Speed	50 KPH

NOTES

HITCHING UP WHEN FITTED TO PROGLIDER WHEEL GEAR

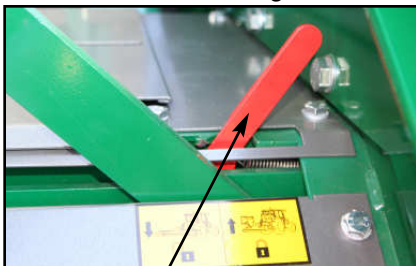
- **Always hitch and unhitch on level ground for safety reasons.**
- **When hitching up, never allow anyone to stand between the tractor and the mower.**
- Reverse the tractor up to the ProGlider and hitch up. When using a drawbar pin ensure that it is secured with a lynch pin.
- The drawbar is adjustable for different tractor drawbar heights. When the mower is in the mowing position on level ground, the guide pin in the curved slots on either side of the drawbar pivoting section should be positioned in the centre of the curved slot. This allows the drawbar to pivot on undulating ground. To adjust the drawbar height, simply turn the towing eye over or put it on the bottom of the drawbar.
- Connect the hydraulics connectors to the tractor. Single acting rams for the side wings, double acting rams for the wheel gear.
- Couple the P.T.O. Shaft to the tractor putting the wide angle joint at the tractor end. Secure the P.T.O. cover chains. Ensure that P.T.O. Shaft locking pins are located.
- Connect the lighting plug into the tractor.
- **IMPORTANT** - Ensure that the bottom link arms do not come in contact with the P.T.O. Shaft when turning. We recommend that you remove or raise up the tractor link arms by adjustment of the arms.

OPERATING THE MACHINE

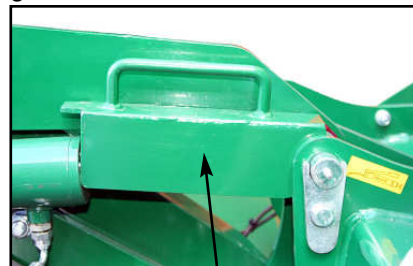
- To lower the mower to the ground, take the weight on the wheel rams (push wheels down), unlock the transport brackets from over the wheel rams, then slowly lift the wheels up off the ground this will lower the mower to the ground.
- When lowering the wings ensure that there are no bystanders within 4m of the wings, then simply activate the wing rams to lift the wings, this will take the weight off the transport catches. Then shift the wing catches to the unlocked position, and slowly lower the wings to the ground, you are now ready to use the mower. (See using the mower instructions on page 7).
- When mowing always lift the wheels to the up position, to allow the cut grass to flow out of the rear of the mower and to allow the mower to run on the rollers when mowing.

TRAVELLING ON THE PUBLIC HIGHWAY

- Check your local Highway Code of Regulations before travelling on the public highway.
- When travelling on the highway ensure that both of the mower wing catches are locked in the up position.
- Ensure that both of the wheel rams are locked in the down position.
- Make sure that all lights and indicators are working.



Wing Catch



Wheel Ram Transport Brackets

MAINTENANCE

To keep your ProGlider in excellent working condition we recommend that you follow this maintenance program:-

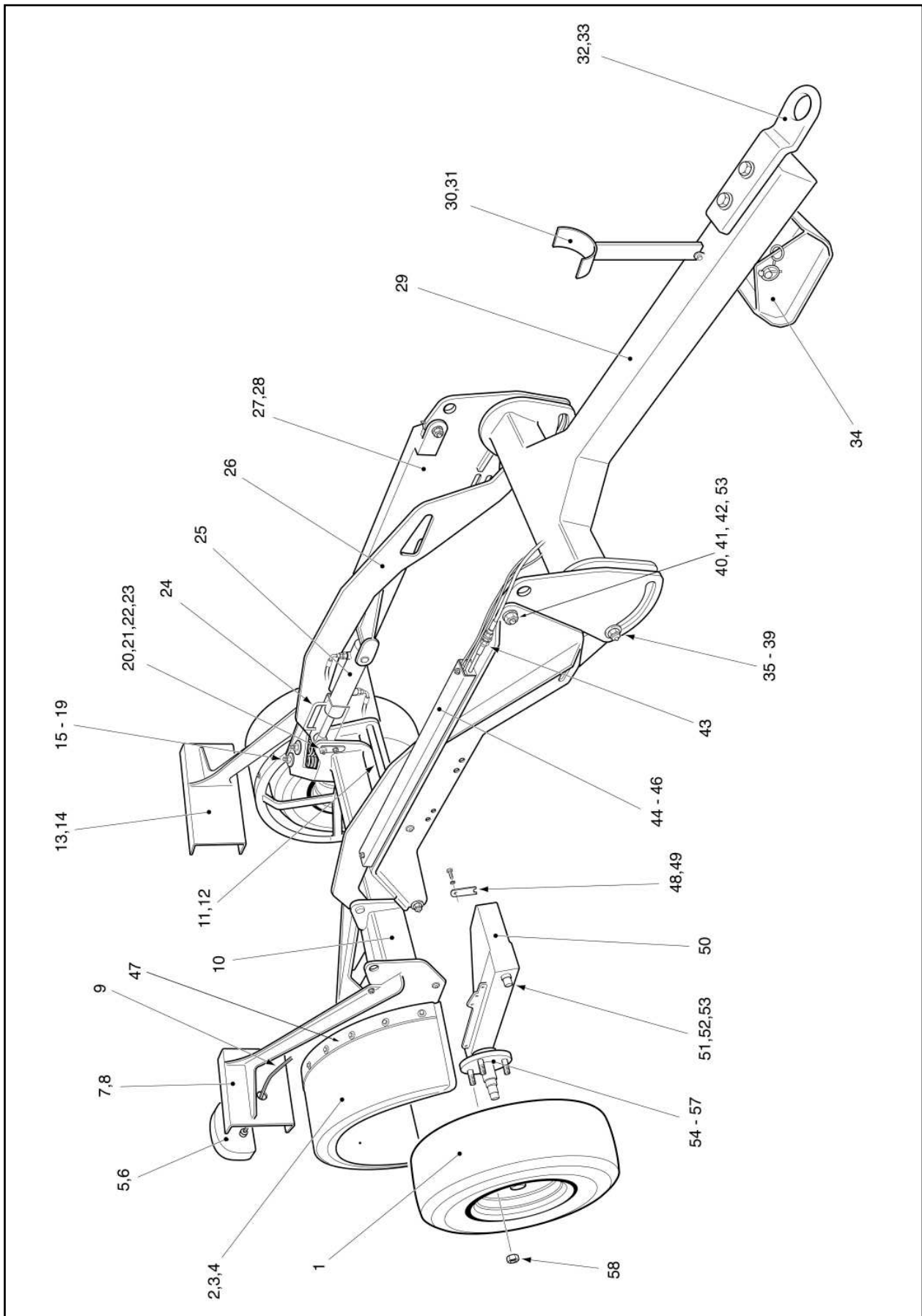
REGULARLY - (Every 30 Hours)

- Grease all pivot points including hydraulic rams.
- Check all hydraulic hoses.
- Check all nuts and bolts for tightness.
- Check all light bulbs and connecting plug.
- Grease P.T.O. Shaft.

WINTER STORAGE

- Repair or replace any worn or broken parts.
- Take special care to look at the bronze brushes in the main pivot points.
- Thoroughly wash machine to remove all oil, grease and debris.
- Inspect all light bulbs and connecting plug.
- Grease all grease points.
- Inspect all hydraulic hoses.

PARTS ILLUSTRATION - PROGLIDER



PARTS LIST - PROGLIDER

Item No.	Part No.	Description	Qty. per Machine
1	WX-4752	Wheel	2
2	WX-14651	Mudguard	2
3	WX-31506	Mudguard Fastening Set	2
4	WX-31601	Mudguard Frame Fastening Set	2
5	TS-2470-05	Left Hand Light Unit	1
6	TS-2472-05	Right Hand Light Unit	1
7	WX-22680	Right Hand Light Bracket	1
8	WX-31701	Right Hand Light Bracket Fastening Set	1
9	TS-58-1093-027	Wiring Loom	1
10	WX-22880	Axle Carrier	1
11	WX-14951	Axle Carrier Pin c/w Grease Nipple	1
12	WX-32001	Fastening Set	1
13	WX-22780	Left Hand Light Bracket	1
14	WX-31701	Left Hand Light Bracket Fastening Set	1
15	WX-22980	Spring Carrier	2
16	WX-1825	Spring	4
17	WX-3120	Spring Retaining Washer	8
18	WX-16266	Spacer	4
19	WX-3201	Spring Fastening Set	4
20	WX-10458	Ram Pin Retainer	4
21	WX-7328	Pin c/w Grease Nipple	4
22	WX-31901	Pin Retainer Fastening Set	4
23	WX-16366	Safety Catch Spacer	4
24	WX-23080	Transport Locking Bracket	2
25	WX-16056	Hydraulic Cylinder	2
26	WX-13379	Link Bar	2
27	WX-13479	Main Bracket Left and Right Hand	2
28	WX-32101	Fastening Set	1
29	WX-23180	Drawbar	1
30	WX-5680	P.T.O. Prop	1
31	WX-4903	Fastening Set	1
32	WX-2330	Ring Hitch	1
33	WX-1901	Ring Hitch Fastening Set	2
34	WX-16580	Drop Shoe c/w Pin	1
35	WX-7428	Front Link Pivot Pin	2
36	WX-3220	Locating Washer	2
37	WX-5155	Roller	2
38	WX-0246	Nipple	2
39	WX-3201	Pivot Pin Fastening Set	2
40	WX-31801	Fastening Set	2

PARTS LIST - PROGLIDER

Item No.	Part No.	Description	Qty. per Machine
41	WX-7228	Drawbar Pivot Spacer	2
42	WX-7338	Bronze Bush	2
43	WX-15856	Hose Kit	1
44	WX-7776	Hose Cover	1
45	WX-32201	Fastening Set	1
46	WX-17156	Hose Clamp	2
47	WX-10658	Mudguard Bracket	2
48	WX-10558	Bracket Pin Retainer	2
49	WX-32301	Fastening Set	2
50	WX-10658	Axle Bracket	2
51	WX-7128	Pin	2
52	WX-7238	Bronze Bush	4
53	WX-0246	Nipple	4
54	WX-14751	Hub	2
55	WX-7538	Inner Hub Bearing	2
56	WX-7638	Outer Hub Bearing	2
57	WX-2245	Seal	2
58	WX-10353	Wheel Stud	10
N/S	WX-6981	P.T.O. Shaft	1
N/S	WX-6981A	P.T.O. Shaft Cover Complete	1



Certificate of CE Conformity

Machine Model:

RMX 480

Description:

ROLLER MOWER

*I hereby certify that the machine detailed hereon
conforms to:*

**European Directives 2008/42/EC
Supply of Machinery Regulations 2008
As amended 91/368EEC – 93/44EEC – 93/68EEC
HSE AIS 33**

Signed:

A handwritten signature in black ink, appearing to be 'R. J. ...', is written over a dotted line that extends to the right towards the date field.

Quality Manager

Date:

APRIL 2011

Wessex International

Charlton House, Caxton Place, East Portway Industrial Estate, Andover, Hampshire SP10 3QN
Telephone: 01264 345870 Fax: 01264 345 880

www.wessexintl.com



Wessex International
Charlton House, Caxton Close, East Portway Industrial Estate, Andover Hampshire. SP10 3QN
Telephone: 01264 345870 Fax 01264 345880
e-mail: sales@wessexintl.com

www.wessexintl.com
