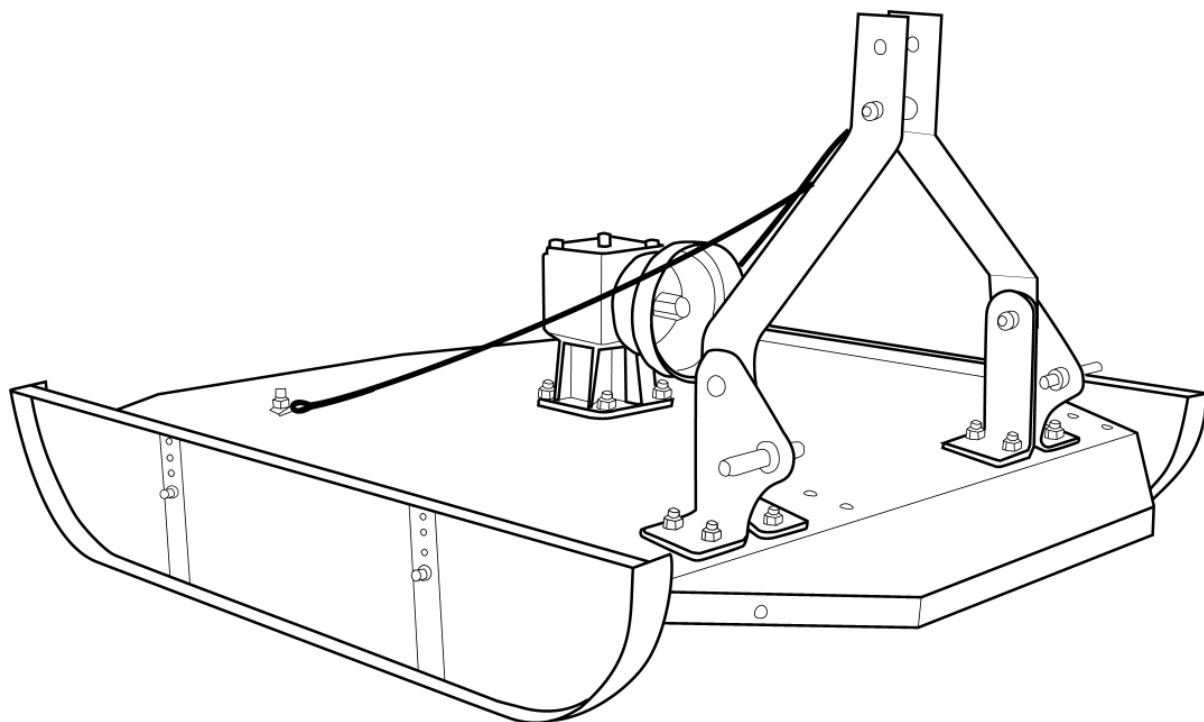


Operation Manual and Parts Book

Wessex Country CT120, 150, 180 Toppers



Product Code: L2026

CONTENTS

Welcome to your new Wessex Product	2
Safety Decals	3
Important Safety Warnings	4
Warranty	5
Setting up your Mower	6
Cutting Height Adjustment	6
Using your Wessex Mower	6
Maintenance	7
Specifications	7
Parts Illustration / Parts List - Main Deck Assembly	8
Parts Illustration / Parts List - 'A' Frame Assembly	9
Parts Illustration - Gearbox Assembly	10
Parts List - Gearbox Assembly	11
Parts Illustration / Parts List - Blade Assembly	12
P.T.O. Shaft Operation and Maintenance	13, 14
Notes	15, 16
CE Certificate	17

WELCOME TO YOUR NEW WESSEX PRODUCT

Thank you for purchasing a Wessex product. As a Wessex customer, you now number among the most important people of our business and we will endeavour to give you the best service available through our dealer network.

Please read this Manual carefully and familiarise yourself and other persons that will be using the machine with its contents, to ensure the optimum performance and working life of your machine. It is advisable that a copy of this Manual is kept in the workshop and one copy with the machine. Further copies are available through your dealer.

On delivery, your dealer should go through the workings of the machine with you, explaining the setting up procedures, all of which are contained in this manual for further reference. The Warranty Registration Form must also be completed and returned to us **within 7 days of delivery** in order to validate the Warranty.

PLEASE READ THE FOLLOWING PAGES CAREFULLY BEFORE USING YOUR MACHINE AND KEEP THIS MANUAL IN A SAFE PLACE.



**THIS SAFETY SYMBOL IS TO ALERT OPERATORS OF A HAZARD
THAT MAY RESULT IN INJURY.
ALWAYS FOLLOW INSTRUCTIONS CAREFULLY**

SAFETY DECALS



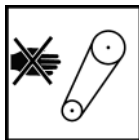
- GB **ATTENTION** Description of pictograms.
 F **ATTENTION** Description des pictogrames.
 D **VORSICH** Beschreibung der piktogramme.



- GB Read Operating manual before use.
 F Lisez Manual D'Opération avant l'utilisation.
 D Vor der Benutzung, Betriebshandbuch lesen.



- GB Ear defenders must be worn.
 F Défenseurs des oreilles doivent être portés.
 D Gehörschutz getragen werden.



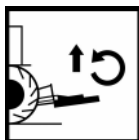
- GB Never remove guards or attempt adjustment until rotor has stopped.
 F Ne retirez jamais les gardes ou d'ajustement tentative jusqu'à ce que toutes les pièces mobiles ont été interrompus.
 D Schutzvorrichtung niemals abnehmen oder einstellung versuchen, bevore der rotor abstellt.



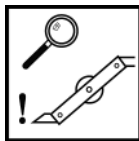
- GB Bystanders must be at least 20 metres from machine range of action.
 F Des spectateurs doivent s'écarter au moins 20 mètres du rayon d'action de la machine.
 D Umstehenden müssen sich mindestens 20 meter vom maschinenbetriebsraum entfernen.



- GB Stand clear. Flying objects possible.
 F S'écarter! Possibilité d'objets volants.
 D Zurückbleiben! Herumfliegende objekte möglich



- GB Lift Machine before turning
 F Levez la machine avant de la tourner
 D Maschine aufheben, bevor man sie umdreht.



- GB Examine blades regularly. The operator is responsible for machine damage caused by unbalanced rotors.
 F Examinez des lames régulièrement. L'opérateur est responsable des dommages à la machine provoqués par des rotors mal équilibrés
 D Klängen regelmäßig kontrollieren. Der abeiter ist an den durch unausgewogenen rotoren maschinenschäden verantwortlich.



- GB Keep hands and feet clear
 F Garder les mains et les pieds.
 D Halten Sie Ihre Hände und Füße.

IMPORTANT SAFETY WARNINGS



Wessex machines are guarded for your protection, but you must always observe certain elementary precautions. Machines are potentially **dangerous** and should be used with the greatest respect and **ALL OPERATORS MUST** read this manual and be aware of all safety precautions.

1. **NEVER** attempt any adjustment whatsoever, unless the machine is **COMPLETELY** at a standstill.
2. **NEVER** attempt to clear any obstructions around the mower unless the machine is **COMPLETELY** at a standstill.
3. **NEVER** remove belt guards unless the machine is **COMPLETELY** at a standstill.
4. **NEVER** remove safety guards which are provided for your protection.
5. **NEVER** operate the mower with people behind, keep everybody (especially children and animals) at a safe distance, **minimum 20 metres**.
6. Stand well back from the machine when cutters are spinning.
7. Regularly inspect the **BLADES AND FIXING BOLTS** to ensure that they are in tip-top condition. Replace blades **IMMEDIATELY** if any signs of fracture or excess wear becomes apparent. Serious damage, which is excluded from our warranty conditions, may result from using your mower with an unbalanced rotor. When replacing blades, always fit new mounting bolts and nuts to ensure that the rotor is balanced and running smoothly.

HEALTH AND SAFETY - Noise at Work Regulations

READING AT THE OPERATORS EAR

Wessex RMX Roller mower: Approximately 95 D.B.A

Depending on conditions and material being cut, this reading may alter, it is therefore advisable for users to do their own assessment.



In compliance with the above regulations, Ear Protectors must be worn when operating machinery.

WARRANTY

Your Wessex product or equipment is warranted free from defect in workmanship or manufacture for one year from date of purchase. Any parts which appear to us to be defective, either in material or workmanship shall be replaced or repaired at no cost to the purchaser, subject to the following conditions:

1. The registration card enclosed with this booklet must be returned to us within seven days of purchase.
2. Any failure in the machine should be reported in the first instance immediately to your dealer, who will act on your behalf to resolve the matter to your satisfaction.
3. The defective parts will be returned by your dealer to us, accompanied by a full statement describing the failure and the circumstances and conditions in which the failure occurred.
4. The following are specifically excluded from our terms of warranty:
 - a) Fair wear and tear, especially to belts, brushes, blades and spinners.
 - b) Damage to blades or brushes caused through incorrect positioning of the rotor (see instructions).
 - c) Damage caused by neglect or lack of lubrication.
 - d) Damage caused by misuse or abuse.
 - e) Damage caused whilst the machine is in transit.
 - f) Damage caused to the frame of the machine by running the machine with unbalanced rotors, blades or spinners.
 - g) Damage caused to the machine by use with loose nuts, bolts, screws or any other type of fittings.
5. The warranty is for the benefit of the first user only.
6. Wessex International decisions will be final and binding.

Note:

It is recommended that every machine is inspected after one hour of operation to check that all nuts, bolts, screws or any other types of fixings are tight and any loose fixings or components should be rectified as appropriate.

Further inspections should be carried out at regular intervals thereafter.

SETTING UP YOUR MOWER

- Reverse your tractor up to your mower, and connect the bottom link arms onto the bottom link pins and secure with lynch pins.
- Adjust the right hand link arm so that both bottom link pins are at the same level.
- Connect the top link and adjust so that when in work the 'A' frame can float backwards and forwards to follow the ground contours.
- Connect the P.T.O. shaft, ensuring that the shaft is not too long for your tractor. If necessary, the shaft, which is of tubular section, may be easily cut with a hacksaw. See P.T.O. instructions on pages 13 and 14.

CUTTING HEIGHT ADJUSTMENT

- Lift your mower up on the tractors hydraulics and simply raise or lower the side skids to adjust the cutting height.
- Once you have set the cutting height lower the machine onto the ground and set the top link so that the lifting strap is loose so that the machine can follow the ground contours.
- Always ensure that the full length of the skids is in contact with the ground.

USING YOUR WESSEX MOWER

- The correct P.T.O. speed for your mower is 540 rpm. NEVER use the mower at a P.T.O. speed in excess of this.
- Before engaging the P.T.O. ensure that there are no bystanders within 10 metres.
- Having set the mower up in accordance with the instructions above, engage the P.T.O., and selecting a low forward speed, gently release the clutch.
- You will establish by experience what is the optimum forward speed for your conditions, but on regularly maintained grass, you should achieve a good finish at 5-6 mph.
- Long wet grass will have to be cut more slowly. In very difficult conditions better results are obtained by making two passes, in opposite directions - lowering the cutting height for the second pass.

MAINTENANCE

Periodically (Every 50 hours)

- Grease the P.T.O. shaft bearings.
- Grease the P.T.O. shaft sliding tube.
- Check the gearbox oil, top up with EP90 gear oil.

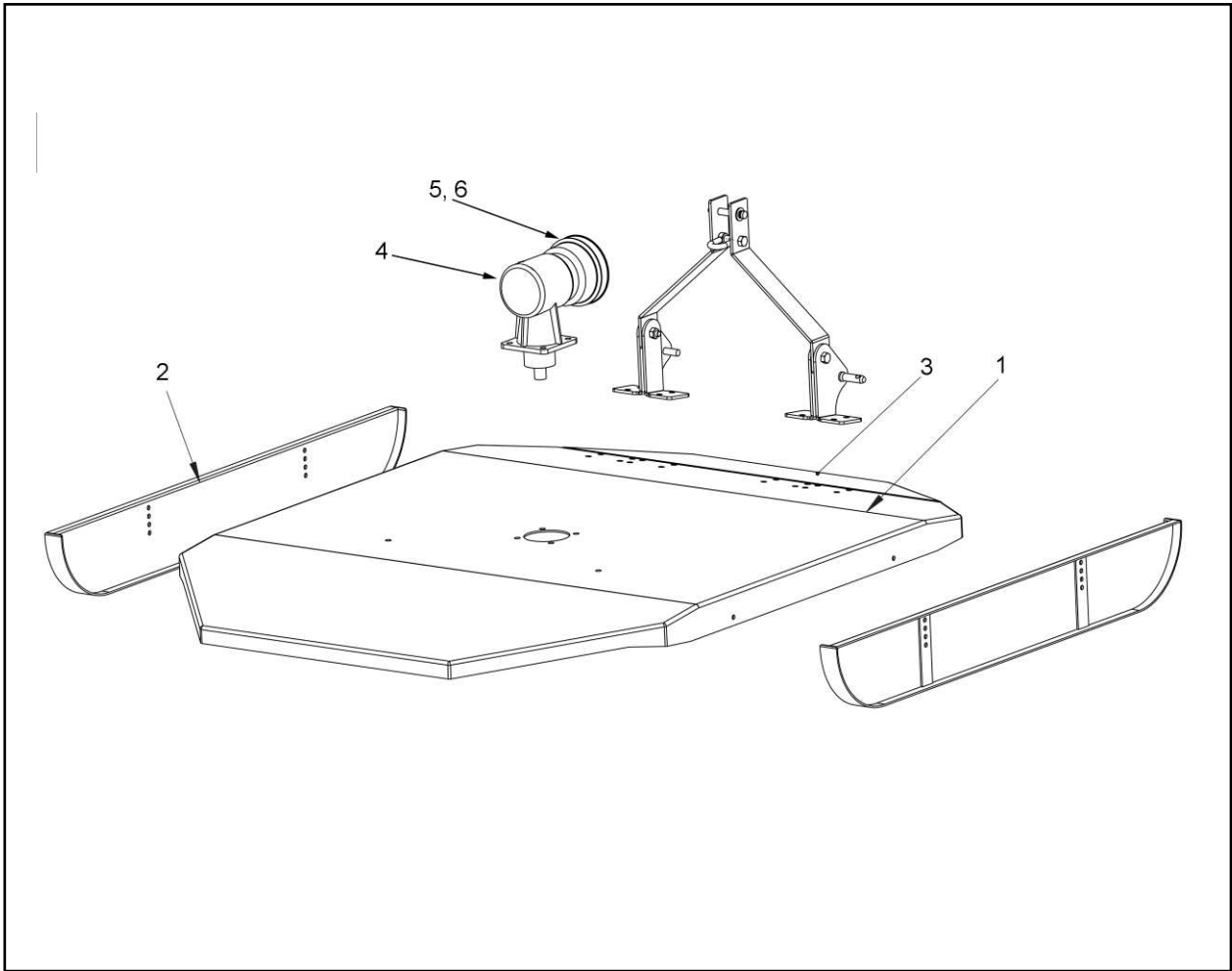
Regularly (Every 10 hours)

- Inspect the condition of the cutting blades.
- Replace any chipped or broken blades.
- **Do not run with unbalanced rotor this will damage your machine and is not covered by the warranty.**
- **The use of non Genuine Wessex Parts will invalidate Warranty.**

SPECIFICATIONS

	<u>CT120</u>	<u>CT150</u>	<u>CT180</u>
Cutting Width (cm)	105	139	173
Overall Width (cm)	121	153	185
Cutting Height (mm)	10-85	10-85	10-85
Weight (kg)	147	198	242
H.P. Requirement	14	16	25

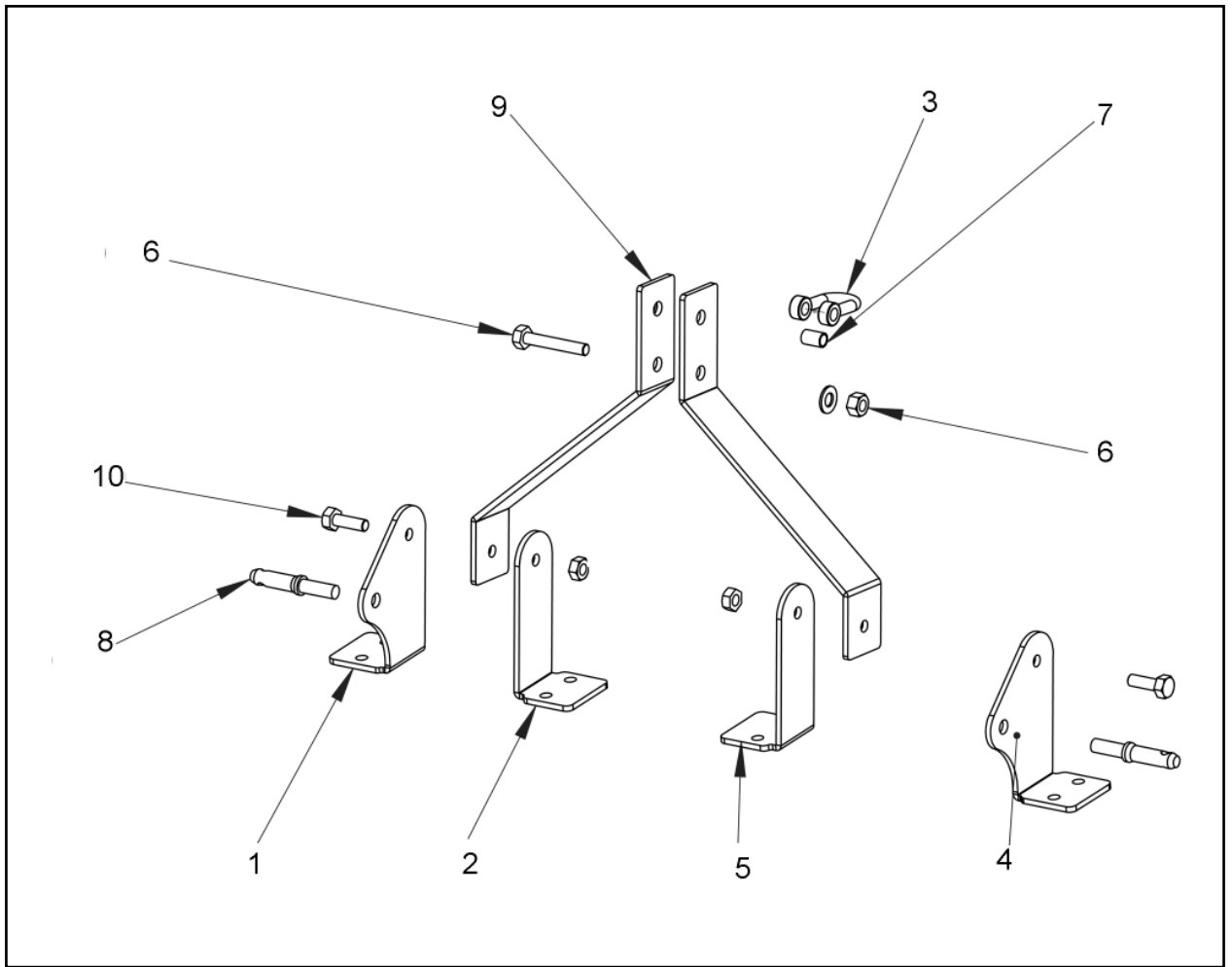
PARTS ILLUSTRATION - MAIN DECK



PARTS LIST - MAIN DECK

Item No.	CT120 Part No.	QTY	CT150 Part No.	QTY	CT180 Part No.	QTY	Description
1	WX-12879	1	WX-12979	1	WX-13079	1	Main Deck
2	WX-5474	2	WX-5374	2	WX-5374	2	Skid Assembly
3	WX-13178	1	WX-13278	1	WX-13278	1	Front Guard
4	WX-5657	1	WX-5657	1	WX-5657	1	Gearbox Assembly
5	WX-5177	1	WX-5177	1	WX-5177	1	Cone Guard
6	WX-5103	1	WX-5103	1	WX-5103	1	Fastening Set
N/S	WX-7330	1	WX-7430	1	WX-7930	1	Support Strap
N/S	WX-4581	1	WX-4681	1	WX-4681	1	P.T.O. Shaft

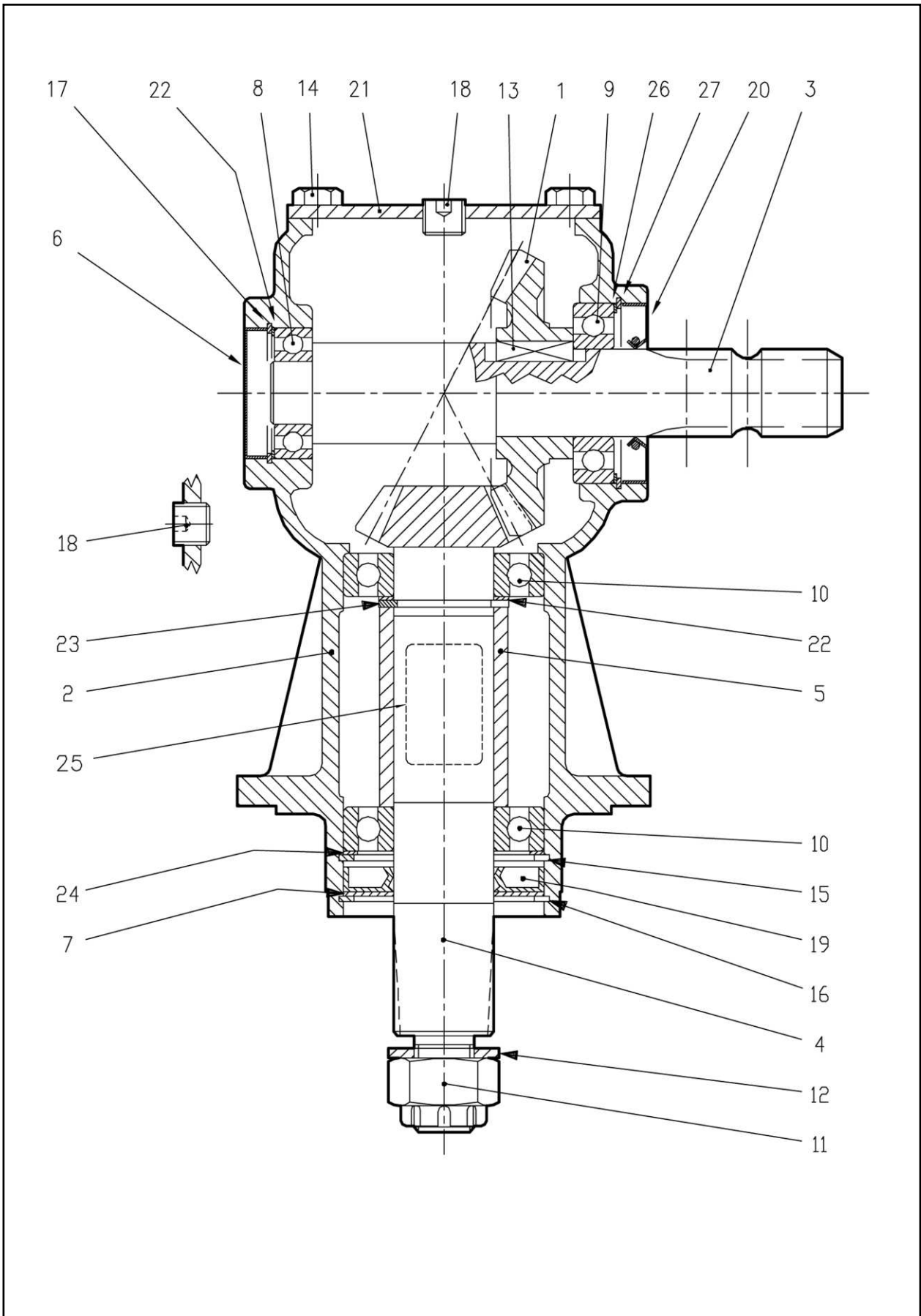
PARTS ILLUSTRATION - 'A' FRAME ASSEMBLY



PARTS LIST - 'A' FRAME ASSEMBLY

Item No.	CT120 Part No.	QTY	CT150 Part No.	QTY	CT180 Part No.	QTY	Description
1	WX-9858	1	WX-9858	1	WX-9858	1	Left Hand 'A' Frame Bracket
2	WX-9758	1	WX-9758	1	WX-9758	1	Left Hand 'A' Frame L Bracket
3	WX-0629	1	WX-0629	1	WX-0629	1	Shackle
4	WX-9958	1	WX-9958	1	WX-9958	1	Right Hand 'A' Frame Bracket
5	WX-10158	1	WX-10158	1	WX-10158	1	Right Hand 'A' Frame L Bracket
6	WX-45031	1	WX-45031	1	WX-45031	1	Bolt and Nut
7	WX-10058	1	WX-10058	1	WX-10058	1	Spacer
8	WX-0226	2	WX-0226	2	WX-0226	2	Bottom Link Pin
9	WX-21080	2	WX-21080	2	WX-23280	2	'A' Frame Bracket
10	WX-7303	2	WX-7303	2	WX-7303	2	16 x 50 Bolt Set

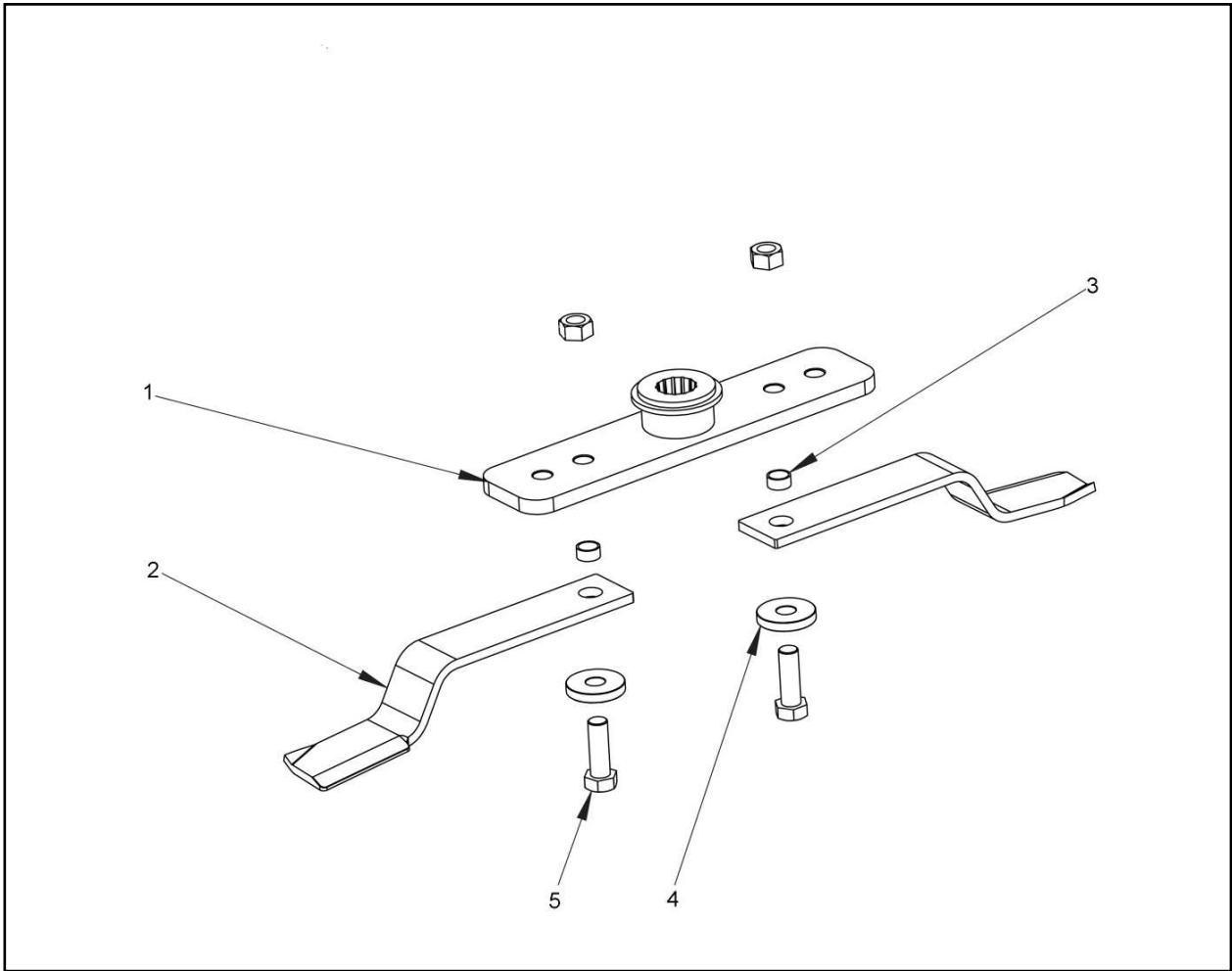
PARTS ILLUSTRATION - 'GEARBOX ASSEMBLY



PARTS LIST - GEARBOX ASSEMBLY

Item No.	Part No.	Description	Qty
1	GXS-0.135.5000.00	Crown Gear Z23 M5	1
2	GXS-0.205.0300.00	Casing	1
3	GXS-0.135.2001.00	Input Shaft 1" 3/8 Z6	1
4	GXS-0.135.6008.00	Pinion Z12 M5	1
5	GXS-0.135.7105.00	Spacer	1
6	GXS-8.7.0.00693	Oil Cap	1
7	GXS-1.135.7100.00	Protective Washer	1
8	GXS-8.0.1.00034	Ball Bearing	1
9	GXS-8.0.1.00870	Ball Bearing	1
10	GXS-8.0.1.00871	Ball Bearing	2
11	GXS-8.2.2.00515	Castle Nut M24 x 2	1
12	GXS-8.3.2.00409	Bolt Washer (25 x 44 x 4)	1
13	GXS-8.4.1.00993	Parallel Key B (10 x 8 x 30)	1
14	GXS-8.1.1.00054	Bolts M 10 x 20 HHB (8.8)	4
15	GXS-8.5.2.00030	Snap Ring (80 x 83.5 x 2.5, For Holes)	1
16	GXS-8.5.3.00955	Snap Ring SB 81	1
17	GXS-8.5.2.01358	Snap Ring (52 x 55 x 2.5, For Holes)	1
18	GXS-8.6.6.00201	3/8' Gas Solid Plug	2
19	GXS-8.7.1.00748	Dust Lip (40 x 80 x 12)	1
20	GXS-8.7.3.00055	Oil Seal	1
21	GXS-0.205.1300.00	Cover	1
22	GXS-0.244.7500.00	Shim Kit (40.3 x 51.5)	2
23	GXS-8.5.1.00680	Snap Ring (40 x 37.5 x 2.5, For Shafts)	1
24	GXS-0.267.7500.00	Shim Kit (69 x 79.7)	1
25	GXS-0.124.7135.00	Name Plate	1
26	GXS-0.248.7500.00	Shim Kit (60.3 x 71.7)	1
27	GXS-8.5.2.00131	Snap Ring (72 x 75 x 2.5, For Holes)	1

PARTS ILLUSTRATION - 'BLADE ASSEMBLY



PARTS LIST - BLADE ASSEMBLY

Item No.	CT120 Part No.	QTY	CT150 Part No.	QTY	CT180 Part No.	QTY	Description
1	WX-10470	1	WX-10870	1	WX-10570	1	Blade Bar
2	WX-3270A	2	WX-3270A	2	WX-3270A	2	Blade
3	WX-2839	2	WX-2839	2	WX-2839	2	Blade Bush
4	WX-2939	2	WX-2939	2	WX-2939	2	Blade Washer
5	WX-30101	2	WX-30101	2	WX-30101	2	Bolt Set
3-5	WX-32901	1	WX-32901	1	WX-32901	1	Complete Blade Fastening Set

PTO SHAFT OPERATION AND MAINTENANCE

IMPORTANT!

PTO drive shafts must only be used for their intended purpose.

PTO drive shafts are designed for specific machine types and power requirements.

They must not be replaced by other models.

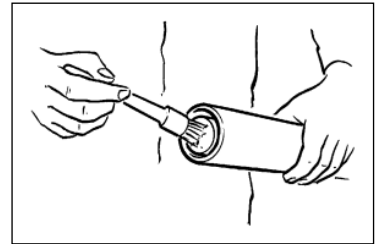
Ensure that the PTO drive shaft is securely connected.

Only use a completely protected drive system:

PTO drive shaft with complete guard and complementary guard on tractor and implement. A complete guard is essential in all working positions.

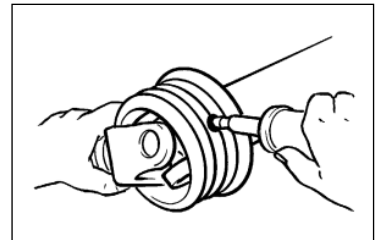
LUBRICATION

Lubricate with quality grease before starting work and every 8 operating hours.



Clean and grease the PTO drive shaft before each prolonged period of non-use.

Grease the guard tubes in winter to prevent freezing.

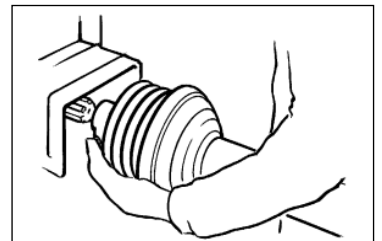


COUPLING THE PTO SHAFT

Clean and grease the PTO and PIN

Q.-d pin

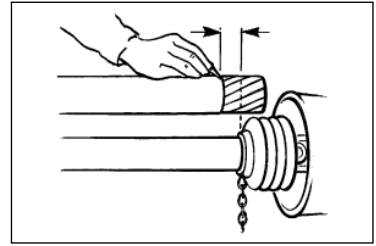
Press q.-d. pin and simultaneously push PTO drive shaft onto PTO until pin engages.



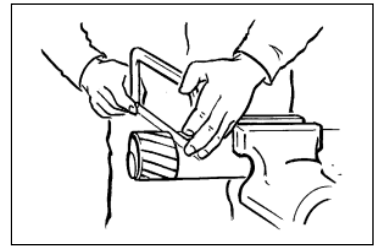
PTO SHAFT OPERATION AND MAINTENANCE

LENGTH ADJUSTMENT

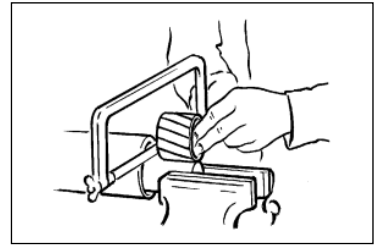
To adjust the length, hold the half-shafts next to each other in the shortest working position and mark them.



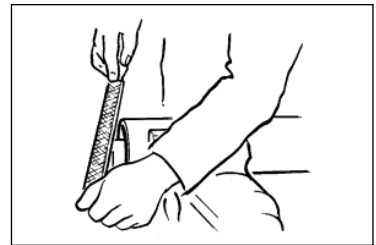
Shorten inner and outer guard tubes equally.



Shorten inner and outer sliding profiles by the same length as the guard tubes.



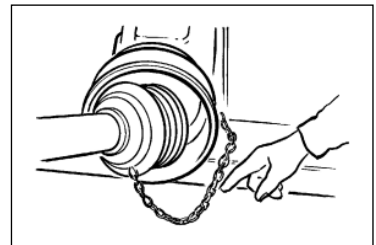
Round off all sharp edges and remove burrs.
Grease sliding profiles.



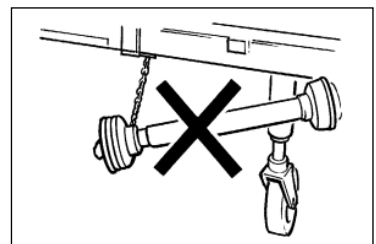
No other changes may be made to the PTO drive shaft and guard.

CHAINS

Chains must be fitted so as to allow sufficient articulation of the shaft in all working positions.



The PTO drive shaft must not be suspended from the chains!



NOTES

NOTES



Certificate of CE Conformity

Machine Model:

CT120, 150, 180

Description:

Rotary Mower

*I hereby certify that the machine detailed hereon
conforms to:*

**European Directives 2008/42/EC
Supply of Machinery Regulations 2008
As amended 91/368EEC – 93/44EEC – 93/68EEC**

Signed:

.....
Quality Manager

A handwritten signature in black ink, consisting of stylized initials and a surname, is written over a dotted line.

Date:

August 2011

Wessex International

Charlton House, Caxton Place, East Portway Industrial Estate, Andover, Hampshire SP10 3QN
Telephone: 01264 345870 Fax: 01264 345 880

www.wessexintl.com



Wessex International
Charlton House, Caxton Close, East Portway Industrial Estate, Andover Hampshire. SP10 3QN
Telephone: 01264 345870 Fax 01264 345880
e-mail: sales@wessexintl.com

www.wessexintl.com
