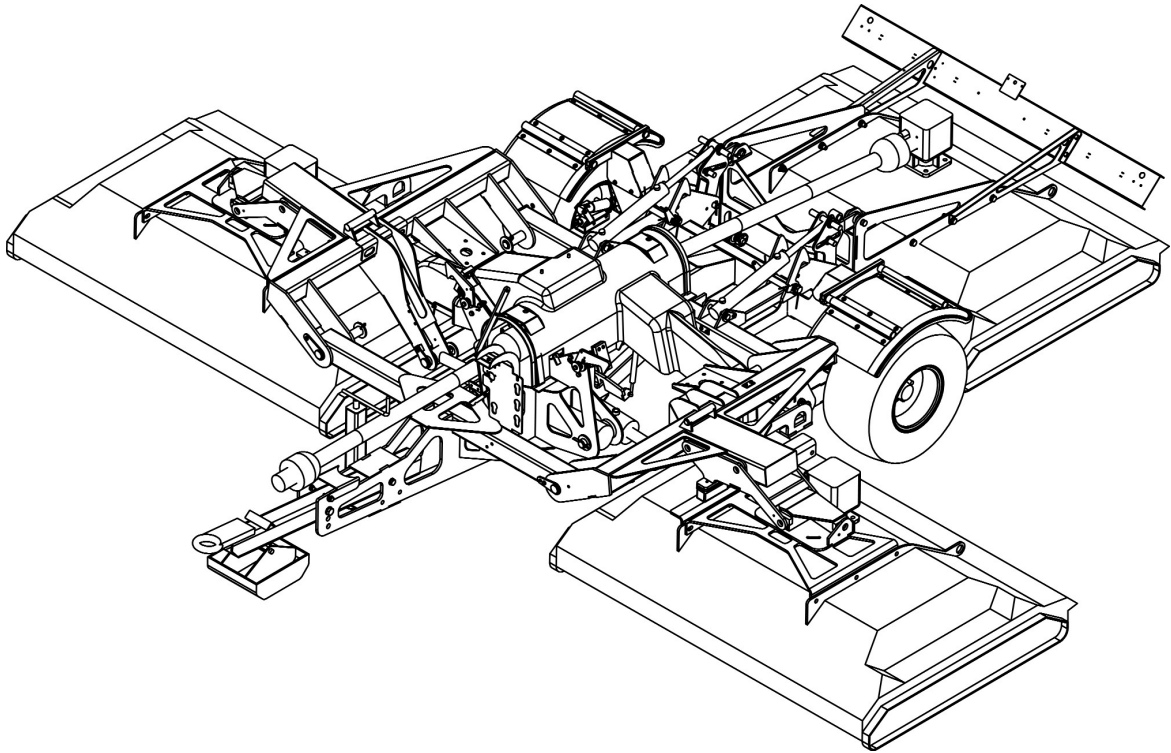




Operation Manual and Parts Book

RMX-500 Tri-Deck Roller Mowers



Product Code: L2053



Issue July 2017

CONTENTS

Welcome to your new Wessex Product	3
Safety Decals	4, 5
Important Safety Warnings	6
Warranty	7
Linking up to the Tractor	8
Using the RMX Tri-deck	8, 9
Altering the Cutting Height	10
Maintenance	11
Lubrication / Belt Adjustment (Mowing Decks)	11
Replacing Drive Belts on the Main Drive Chassis	12
Travelling on the Public Highway	13
Troubleshooting / Winter Storage	14
Cutting Blades / Specifications	15
Parts Illustration - RMX Cutting Deck Mainframe	16
Parts List - RMX Cutting Deck Mainframe	17
Parts Illustration / Parts List - RMX 500 Deck Drive Belts	18
Parts Illustration / Parts List - Deck Gearbox	19
Parts Illustration - RMX Spindles Assembly	20
Parts List - RMX Spindles Assembly	21
Parts Illustration - Tri-deck Main Assembly	22
Parts List - Tri-deck Main Assembly	23
Tri-deck Main Assembly	24
Tri-deck Latch Assembly	25
Parts Illustration - Wing Assembly	26
Parts List - Wing Assembly	27
Wing Gearbox Wing Assembly	28
Suspension	29

CONTENTS

Unbraked Hub Assembly30
Braked Hub Assembly31
Parts Illustration - Rear Deck Assembly with Lightboard and Leg32
Parts List - Rear Deck Assembly with Lightboard and Leg33
Parts Illustration / Parts List - Tensioner Arm Assembly34
P.T.O. Shaft - Operation and Maintenance35, 35
Safety Training Induction37
Daily Inspection Record38
CE Certificate39
Installation Record41

WELCOME TO YOUR NEW WESSEX PRODUCT

Thank you for purchasing a Wessex product. As a Wessex customer, you now number among the most important people of our business and we will endeavour to give you the best service available through our dealer network.

Please read this Manual carefully and familiarise yourself and other persons that will be using the machine with its contents, to ensure the optimum performance and working life of your machine. It is advisable that a copy of this Manual is kept in the workshop and one copy with the machine. Further copies are available through your dealer.

On delivery, your dealer should go through the workings of the machine with you, explaining the setting up procedures, all of which are contained in this manual for further reference. The Warranty Registration Form must also be completed and returned to us **within 7 days of delivery** in order to validate the Warranty.

**PLEASE READ THE FOLLOWING PAGES CAREFULLY BEFORE USING YOUR MACHINE
AND KEEP THIS MANUAL IN A SAFE PLACE.**

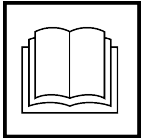


**THIS SAFETY SYMBOL IS TO ALERT OPERATORS OF A HAZARD
THAT MAY RESULT IN INJURY.
ALWAYS FOLLOW INSTRUCTIONS CAREFULLY**

SAFETY DECALS



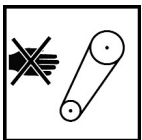
- GB **ATTENTION** Description of pictograms.
 F **ATTENTION** Description des pictogrammes.
 D **VORSICH** Beschreibung von Piktogrammen.



- GB Read Operating manual before use.
 F Lire le Manuel d'utilisation avant l'utilisation.
 D Vor Benutzung Betriebsanleitung lesen.



- GB Ear defenders must be worn.
 F Porter des protections d'oreilles.
 D Gehörschutz muss getragen werden.



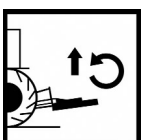
- GB Never remove guards or attempt adjustment until rotor has stopped.
 F Ne jamais retirer les protections ni tenter des ajustements si les rotors sont en mouvement.
 D Niemals Schutzvorrichtungen abnehmen oder eine Einstellung versuchen, bevor der Rotor stillsteht.



- GB Bystanders must be at least 20 metres from machine range of action.
 F Les personnes présentes doivent s'écarter d'au moins 20 mètres du rayon d'action de la machine.
 D Umstehende müssen mindestens 20 m vom Wirkungsbereich der Maschine entfernt sein.



- GB Stand clear. Flying objects possible.
 F S'éloigner ! Possibilité d'objets volants.
 D Zurückbleiben! Herumfliegende Objekte möglich.



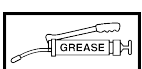
- GB Lift Machine before turning
 F Soulever la machine avant les virages.
 D Die Maschine vor dem Wenden anheben.



- GB Examine blades regularly. The operator is responsible for machine damage caused by unbalanced rotors.
 F Examiner les lames régulièrement. L'opérateur est responsable des dommages à la machine provoqués par des rotors mal équilibrés.
 D Die Messer regelmäßig untersuchen. Der Bediener ist für Maschinenschäden verantwortlich, die durch unwuchtige Spindeln entstehen.



- GB Keep hands and feet clear
 F Ne pas approcher les mains et les pieds.
 D Hände und Füße fernhalten.



- GB Grease points
 F Points de graissage.
 D Schmierpunkte.

SAFETY DECALS



- GB Lifting Point
F Point de levage
D Hebepunkt



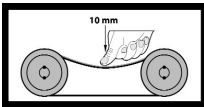
- GB Always lock all cutter decks in the up position when travelling on the highway.
F Toujours verrouiller les plateaux de coupe en position verticale lors du transport sur les routes.
D Beim Transport auf der Straße immer alle Mähdecks in der oberen Stellung verriegeln.



- GB Stand clear of lowering cutting decks.
F S'écarter des plateaux de coupe lorsqu'ils s'abaissent.
D Von Mähdecks, die abgesenkt werden, fernhalten.



- GB Caution, Pinch Points.
F Attention, points de pincement.
D Vorsicht, Einklemmgefahr.



- GB CORRECT BELT TENSION: Check belt tension regularly:
10mm of belt deflection at thumb pressure between pulleys.
F TENSIONNEMENT CORRECT DE LA COURROIE : Contrôler le tensionnement régulièrement :
la déflexion de la courroie sous la pression du pouce entre les deux poulies doit être de 10 mm.
D KORREKTE RIEMENSPANNUNG: Riemen­spannung regelmäßig überprüfen:
10 mm Eindrücktiefe bei Daumendruck zwischen Riemen­scheiben.

IMPORTANT NOTICE

FITTING PTO SHAFT TO MACHINE & TRACTOR

- All safety chains must be anchored tight enough to allow a small amount of movement, but not enough to wrap around the P.T.O. Shaft.
- Ensure that the shaft and guard is regularly greased to avoid overheating and to give lubrication.
- Important: Thoroughly read through the manufacturers instruction book before using the P.T.O. Shaft.

P.T.O.Shafts are not covered by the Wessex Warranty.

IMPORTANT SAFETY WARNINGS



Wessex machines are guarded for your protection, but you must always observe certain elementary precautions. Machines are potentially **dangerous** and should be used with the greatest respect and **ALL OPERATORS MUST** read this manual and be aware of all safety precautions.

1. **NEVER** attempt any adjustment whatsoever, unless the machine is **COMPLETELY** at a standstill and the P.T.O. drive and blades have stopped turning. **Stop Engine and remove Tractor Key.**
2. **NEVER** attempt to clear any obstructions around the mower unless the machine is **COMPLETELY** at a standstill and the P.T.O. drive and blades have been stopped. **Stop Engine and remove Tractor Key.**
3. **NEVER** remove belt guards unless the machine is **COMPLETELY** at a standstill. **Stop Engine and remove Tractor Key.**
4. **NEVER** remove safety guards which are provided for your protection.
5. **NEVER** operate the mower with people around, keep everybody (especially children and animals) at a safe distance, **minimum 20 metres.**
6. Stand well back from the machine when cutters are spinning.
7. Regularly inspect the **BLADES AND FIXING BOLTS** to ensure that they are in excellent condition. Replace blades **IMMEDIATELY** if any signs of fracture or excess wear becomes apparent. Serious damage, which is excluded from our warranty conditions, may result from using your mower with an unbalanced rotor. When replacing blades, always fit new mounting bolts and nuts to ensure that the rotor is balanced and running smoothly.

HEALTH AND SAFETY - Noise at Work Regulations

READING AT THE OPERATORS EAR

Wessex RMX Roller mower: **Approximately 95 D.B.A**

Depending on conditions and material being cut, this reading may alter, it is therefore advisable for users to do their own assessment.



In compliance with the above regulations, Ear Protectors must be worn when operating machinery.

WARRANTY

Your Wessex product or equipment is warranted free from defect in workmanship or manufacture for one year from date of purchase. Any parts which appear to us to be defective, either in material or workmanship shall be replaced or repaired at no cost to the purchaser, subject to the following conditions:

1. The registration card enclosed with this booklet must be returned to us within seven days of purchase. Alternatively if you prefer, you may register your product via our Website.
<http://www.wessexintl.com/warranty-registration>
2. Any failure in the machine should be reported in the first instance immediately to your dealer, who will act on your behalf to resolve the matter to your satisfaction.
3. The defective parts will be returned by your dealer to us, accompanied by a full statement describing the failure and the circumstances and conditions in which the failure occurred.
4. The following are specifically excluded from our terms of warranty:
 - a) Fair wear and tear, especially to belts, blades, bearings and bushes.
 - b) Damage caused through incorrect adjustment (see instructions).
 - c) Damage caused by neglect or lack of lubrication.
 - d) Damage caused by misuse or abuse, including impact damage to blades.
 - e) Damage caused whilst the machine is in transit.
 - f) **Damage caused to the frame of the machine by running the machine with unbalanced rotors, blades or blade bars.**
 - g) Damage caused to the machine by use with loose nuts, bolts, screws or any other type of fittings.
 - h) Please note that P.T.O. Shafts are not covered by the Wessex warranty.
 - i) Damage caused to the machine by impact or collision to the machine . Howsoever caused.
5. The warranty is for the benefit of the first user only.
6. Wessex International decisions will be final and binding.

Note:

It is recommended that every machine is inspected after one hour of operation to check that all nuts, bolts, screws or any other types of fixings are tight and any loose fixings or components should be rectified as appropriate.

Further inspections should be carried out at regular intervals thereafter.

LINKING UP TO THE TRACTOR

1. Always hitch and unhitch on level ground for safety reasons.
2. When hitching up, never allow anyone to stand between the tractor and the implement.
3. Reverse the tractor up to the RMX Tri-deck and hitch up to the towing hitch. When using a drawbar pin ensure that it is secured with a lynch pin.

4. When in work the drawbar of the RMX Tri-deck should be level with the ground, to adjust simply remove drawbar holding bolts and pivot up or down, or turn the drawbar over for extra adjustment.
5. Stop the tractor's engine and couple the P.T.O. Shaft to the tractor putting the wide angle joint onto the tractor. Always hook the P.T.O. chains onto the lugs provided and shorten the chains to suit. The P.T.O. chains must not encircle the P.T.O. guard, as this will cause premature P.T.O. guard damage and wear. Ensure that the P.T.O. Shaft is correctly located and locked in place. (See P.T.O. Shaft Instructions at the back of the book).
6. Connect the lighting plug into the tractor.
7. Connect the hydraulic hoses to the tractor.
8. **IMPORTANT:** Ensure that the bottom link arms of the tractor do not come into contact the the P.T.O. Shaft when turning. We recommend that you remove or raise up the tractor link arms by adjustment of the arms.

USING THE RMX TRI-DECK

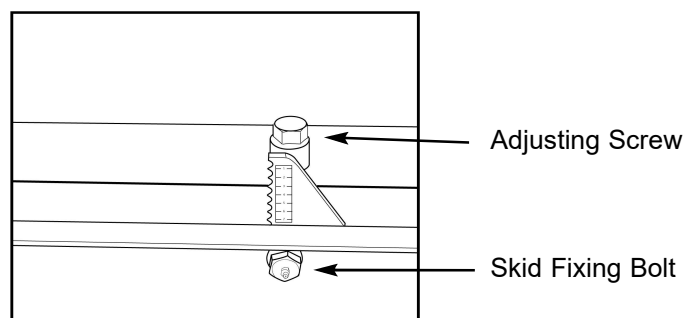
1. Having hitched up to the tractor you are now ready to lower the mowing decks to the ground.
2. Operate the hydraulic functions to take the weight off the safety catches of the side and rear deck carriers.
3. Release the safety catches by activating the catch lever beside the drawbar at the front of the machine, then slowly activate the hydraulics to lower the decks to the ground.
4. **Important** Ensure that all bystanders are at a safe distance from the machine before lowering the decks.
5. **It is important** that the hydraulic spools on the tractor are in the float detent position so that the machine will float and follow the ground contours. If the tractor has no float detent the spool can be locked in the down (dump position) by means of an elastic cord restraint fixed to the spool lever. If you are unsure of the float operation for the tractor's hydraulics consult your Wessex Dealer for advice.
6. **NEVER USE THE MOWER IN P.T.O. SPEEDS IN EXCESS OF 540 RPM.**

USING THE RMX TRI-DECK

7. Slowly engage the P.T.O. drive and select the forward speed carefully. Start off slowly until you are confident with the working width and capability of the machine.
8. When mowing longer thicker grass a slower forward speed will need to be selected.
9. When mowing the RMX Tri-deck is capable of following very undulating ground conditions and with care the side arms will happily run up or down banks of up to 30 degrees.
10. When the mowing decks go beyond 30 degrees the drive will automatically disengage from driving the mowing decks.
11. When lifting the mowing decks up and out of work drop the tractor revs down and put the P.T.O. out of gear before lifting. This will prolong the life of the main drive belts.

ALTERING THE CUTTING HEIGHT

1. Lift the mower decks slightly off the ground on the hydraulic linkage and switch off the tractor.
2. Loosen, using a 30mm spanner or socket, - but do not remove the skid fixing bolts. There are two each side of the main deck.
3. Turn the adjusting screws anticlockwise to lower the rollers, thus increasing the cutting height, or clockwise to raise the rollers, thus reducing the height of cut. Ensure that all screws are adjusted by the same amount otherwise the cut will be uneven. There is a line of increments on the skid to assist in checking for even adjustment.
4. **Tighten all skid fixing bolts.**



MAINTENANCE

To keep your RMX Tri-deck in excellent working condition we recommend that you follow this maintenance programme:-

REGULARLY:-

- Lubricate your RMX as indicated in this manual.
- Check the wheel nuts for tightness particularly on the first days work.
- Check all drive belts on cutting decks for tension and replace if cut, frayed or worn.
- Remove the top belt guard and inspect the main central drive belts. (These are self tensioning).
- **Inspect all blades regularly and replace any that are badly worn, chipped or broken.**
- **DO NOT RUN MACHINE WITH UNBALANCED ROTORS BLADES AND BLADE BARS AS THIS WILL CAUSE DAMAGE TO MAIN DECKS. (NOT COVERED BY WARRANTY).**
- Inspect front and rear rollers and scraper wires.
- Regularly clean cut grass from under belt covers. (In dry conditions a leaf blower or airline is very efficient for this task).

PERIODICALLY:-

- Inspect the main drive shaft bearings.
- Inspect all pivot bushes.
- Inspect safety catches, springs and lubricate catch cables.
- Inspect small guide rollers on centre belt engagement levers.
- Inspect all bolts and nuts for tightness.
- Inspect all pivot pins and retainers.
- At the end of the grass cutting season always clean the RMX thoroughly and grease before winter storage.

Only use genuine Wessex parts in the event of replacing worn parts. This will ensure the continued safe use of your RMX Tri-deck and the validity of your warranty.

LUBRICATION

DAILY:-

- Grease Roller bearings.
- Inspect Blades



WEEKLY:-

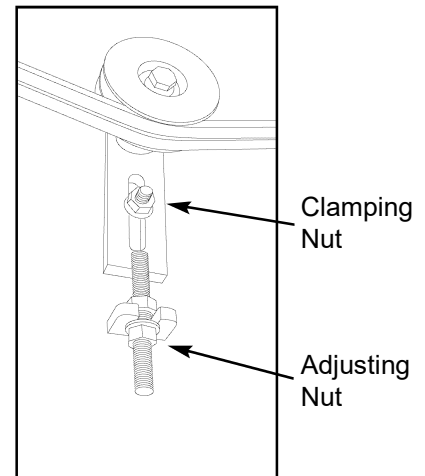
- Grease height adjustment points.
- Check Gearbox oil levels.
- Lubricate all adjusting threads.
- Grease Cutter Spindle bearings.
- Grease P.T.O. Shaft bearings.
- Grease P.T.O. Tube slides.
- Grease Wing release cables.

BELT ADJUSTMENT

The drive belts are tensioned by adjusting the jockey pulleys. These are accessed by removing the belt guards. Loosen the locking nut (24mm spanner) securing the belt tensioner to the main frame and turn the adjuster nut (24mm) clockwise to tighten or anti-clockwise to slacken the belts.

The correct belt tension is approximately 10mm of deflection under thumb pressure halfway between the pulleys.

To replace the belts simply slacken off all adjusters remove old belts and replace with only genuine spare parts. Retighten all tensioners and clamping nuts. New belts always stretch after 3-4 hours work. Retension all belts after 2-3 hours of work.



REPLACING DRIVE BELTS ON THE MAIN DRIVE CHASSIS

1. Stop the tractor engine and remove the key from the tractor before making any adjustments.
2. With the wings in the lowered position remove the top plastic belt guard.
3. Remove the central pulley belt retainers, See Figure 'A'.
4. Lift the side decks to the raised position.
5. Remove the gearbox mounted belt retainers, See Figure 'B'.
6. Remove the mower end of the PTO shaft.
7. Remove the worn or damaged belts from the pulleys.
8. Replace with new belts, Wessex Part No. WX-5934.
9. Refit the gearbox mounted belt retainers and PTO.
10. Lower the side decks to the ground. Ensure that all bystanders are clear of the decks when lowering.
11. When lifting the side cutting decks, it is very important to bring the tractor to a complete standstill. Travelling forwards or backwards while lifting the cutting decks may cause damage to the mower decks, wing arms and associated assemblies.
12. Replace the central pulley belt retainers, ensure that they do not touch the belts when the belts are tensioned in the driving position.
13. Refit the top plastic guard, ensuring that the guard is properly seated at all location points. Take care to ensure that the guard is running in location groove around the gearbox pulley.
Failure to locate the cover will result in damage not covered by the warranty.

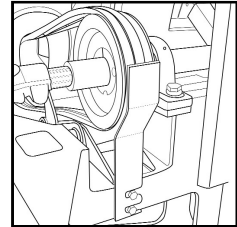


Figure 'A'

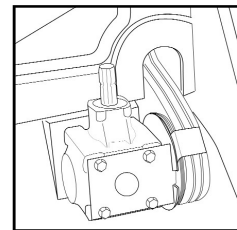


Figure 'B'

TRAVELLING ON THE PUBLIC HIGHWAY

- 1. Check the local highway code of regulations before travelling on the highway. Maximum speed 40kph where traffic laws and road conditions allow.**
- 2. Before travelling on the highway always ensure that all mower deck retaining safety catches are in locked position.**
- 3. Ensure that all lights, indicators and flashing beacon are working and that the number plate is visible.**
- 4. If hydraulic braking option is fitted make sure that it is connected to the tractor and well maintained.**
- 5. Check tyre condition and maintain tyre pressures to 65 psi (4.5 Bar).**
- 6. The RMX Tri-deck is fitted with suspension and rides smoothly on the road, but take special care when cornering and approaching roundabouts and bends in the road.**
- 7. Turning sharply at high speeds may result in overturning causing possible injury or death.**

TROUBLESHOOTING

FAULT	CAUSE	REMEDY
Leaving wheel track uncut	1. Forward speed too fast 2. Cutting height too high	Reduce forward speed Lower cutting height
Poor cut quality	1. Forward speed too fast 2. Excessive blade wear 3. Belts slipping	Reduce forward speed Replace blades Tighten belts
Narrow strip uncut	1. Possibly missing or broken blade	Inspect blades and replace as necessary
Excessive vibration	1. Damaged or missing blades 2. Main spindle bearing worn 3. Loose part	Inspect and replace blades Inspect bearing, replace if damaged Check all nuts and bolts are tight
Excessive scalping	1. Cutting height too low	Raise cutting height.

WINTER STORAGE

Before winter storage, the RMX Tri-deck should be thoroughly inspected:-

- Repair or replace any worn or broken parts.
- Check oil level in the gearbox. Top up or change with EP90 gear oil depending on hours of operation.
- Take special care to look at the blades, rotor and the bearings.
- Remove the belts and ensure that the rotor is free-spinning.
- Make sure that the belts are in good condition before re-fitting.
- Grease all grease points before storage to avoid any corrosion.
- Thoroughly wash the machine to remove all oil, grease, debris and materials.
- After pressure washing always run mower for a short time to expell any water from bearings.
- To avoid corrosion during storage it is advisable after washing to treat the mower to an anti-corrosion treatment such as Dinatrol or similar product, particularly concentrating on the underside

CUTTING BLADES

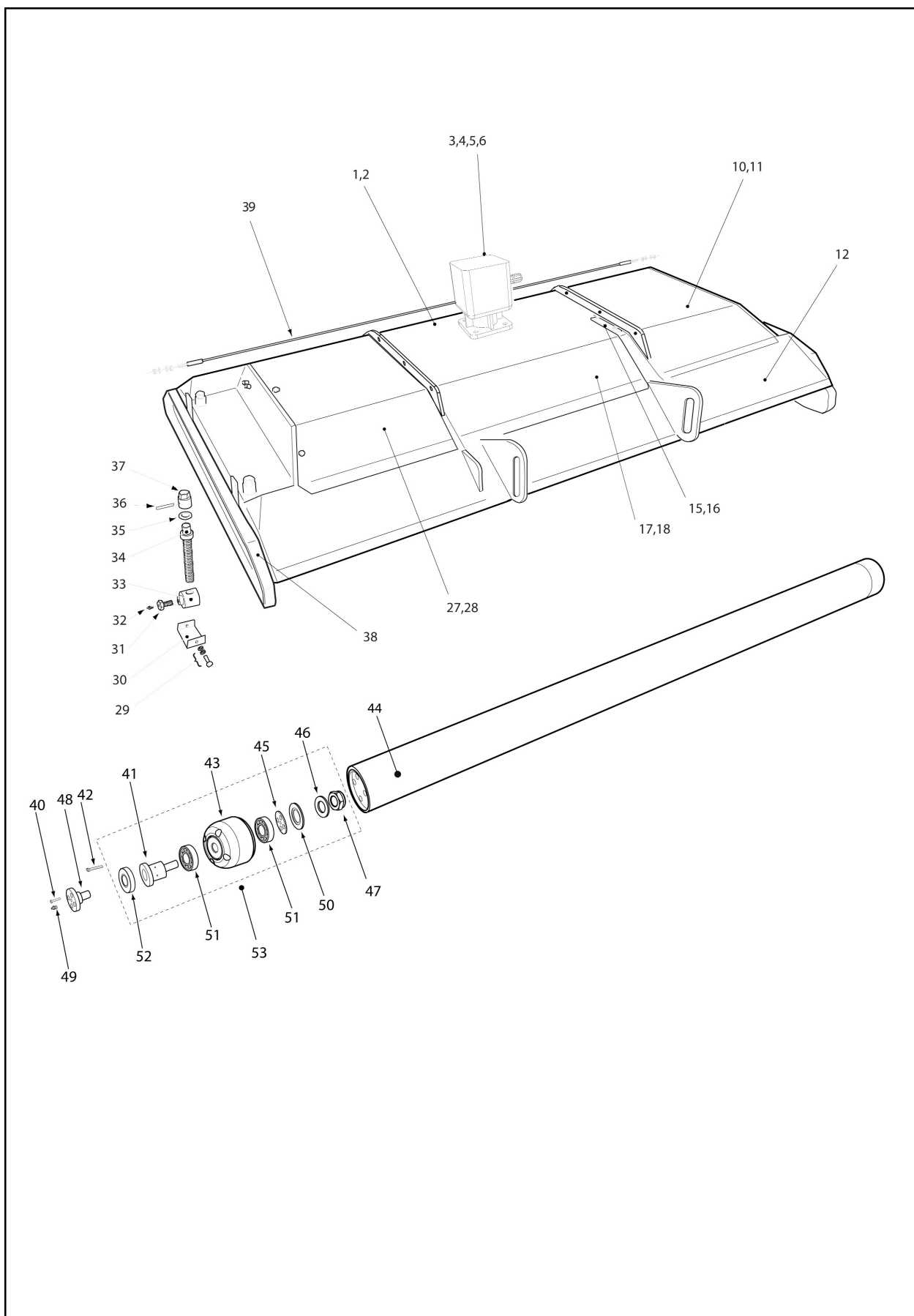
- Inspect the Cutting blades daily.
- Badly worn or broken blades will unbalance rotors causing vibration.
- **Do not use with unbalanced rotors, as this will cause damage to the mower, deck and other structures. (NOT COVERED BY WARRANTY)**
- Always replace blades on both ends of bars to avoid imbalance.
- Always lift machine and prop the machine up with axle stands. Never get underneath an unsupported machine.
- Replace blade tips using new nylock locking nuts every time.
- If you require mulching blades for your RMX they can be ordered from your Dealer. The Part Number for mulching blades is WX-10670. Mulching blade bolts must also be fitted, Part Number WX-3039.

SPECIFICATIONS

Wessex Proline RMX Trideck Roller Mowers

Model:	RMX 500
Cutting Width:	5.0m
Overall Width:	5.13m
Overall Transport Width	2.3m
Overall Length:	5.19
Weight:	3000kg
Cutting Height Range:	10-100mm
No. of Cutting Spindles:	9 (18 blades)
Gearbox Oil:	EP90
Tyre Pressure	65psi/4.5 BAR
Max Road Speed	25 mph/40 kph

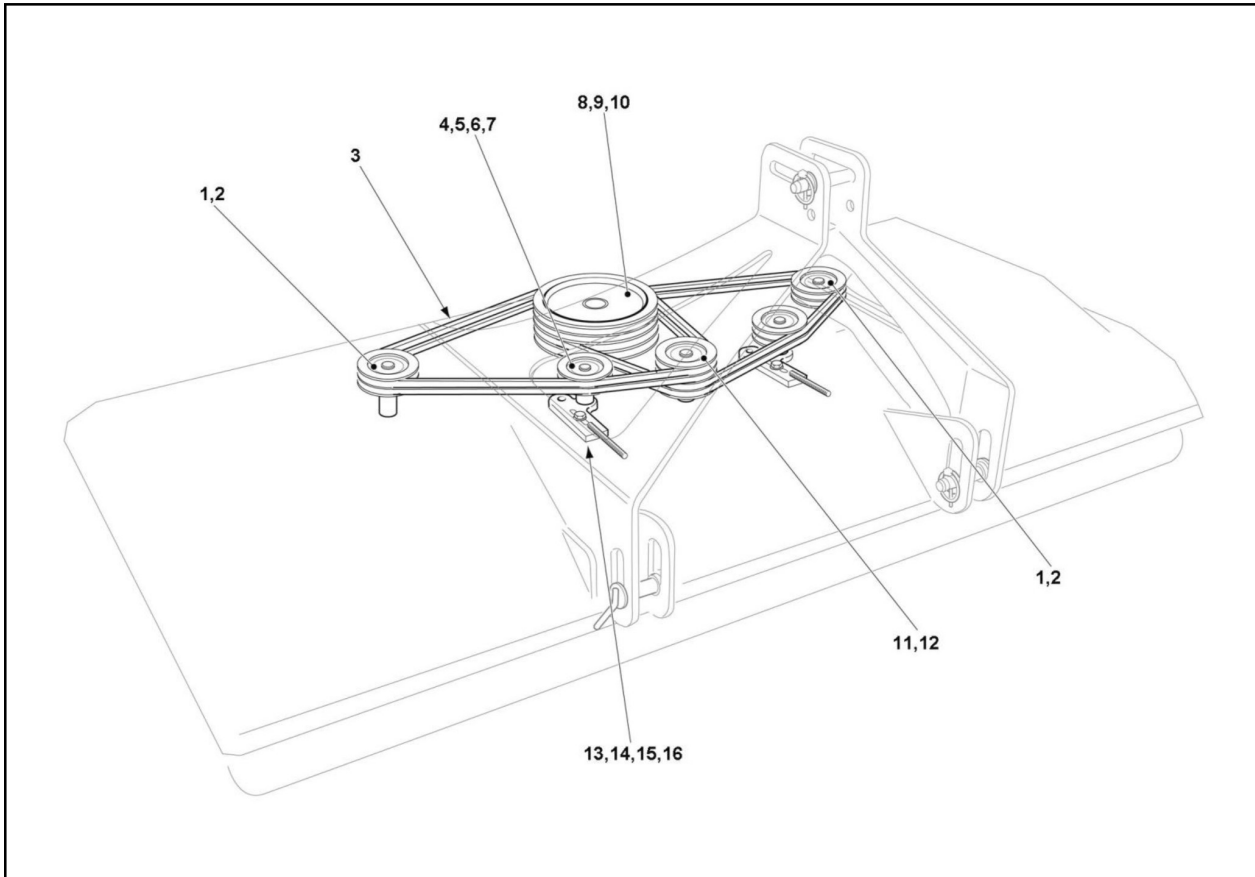
PARTS ILLUSTRATION - RMX CUTTING DECK MAINFRAME



PARTS LIST - RMX CUTTING DECK MAINFRAME

Item No.	RMX 1.8m Part No.	Description	QTY
1	WX-11457	Gearbox Mounting Plate	1
2	WX15003	Gearbox Plate Fastening Set	1
3	WX-5857	Gearbox	1
4	WX-0801	Gearbox Fastening Set	1
5	WX-1878	Cone Guard	1
6	WX-5103	Cone Guard Fastening Set	1
10	WX-10678L	Belt Cover Left Hand	1
11	WX-2729	Belt Cover Fastening Set	4
12	WX-11379	Mainframe	1
17	WX-10578	Centre Belt Cover	1
18	WX-2729	Centre Belt Cover Fastening Set	4
27	WX-10678R	Belt Cover - Right Hand	1
28	WX-2729	Belt Cover Fastening Set	4
29	WX-0705	Adjuster Cover Fastening Set	1
30	WX-14456	Adjuster Cover	4
31	WX-8002	Skid Bolt	4
32	WX-0246	Grease Nipple	4
33	WX-14556	Height Adjustment Nut	4
34	WX-14656	Height Adjustment Thread	4
35	WX-2420	Nylon Washer	4
36	WX-4222	Roll Pin	4
37	WX-14756	Height Adjustment Hexagon	4
38	WX-3574	Roller Carrier	2
39	WX-6530	Roller Scraper	1
40	WX-15603	Roller Spindle Fastening Set	1
41	WX-4355	Central Spindle	1
42	WX-15803	Roller End Fastening Set	1
43	WX-4255	Roller End	1
44	WX-6755	Roller	1
45	WX-7355	Shim	1
46	WX-0615	Washer	1
47	WX-0614	Nut	1
48	WX-6355	Roller Spindle (With Flats)	1
50	WX-4455	Bearing Shield	1
51	WX-8038	Bearing	2
52	WX-2345	Oil Seal	1
53	WX-4155	Roller End Assembly	2

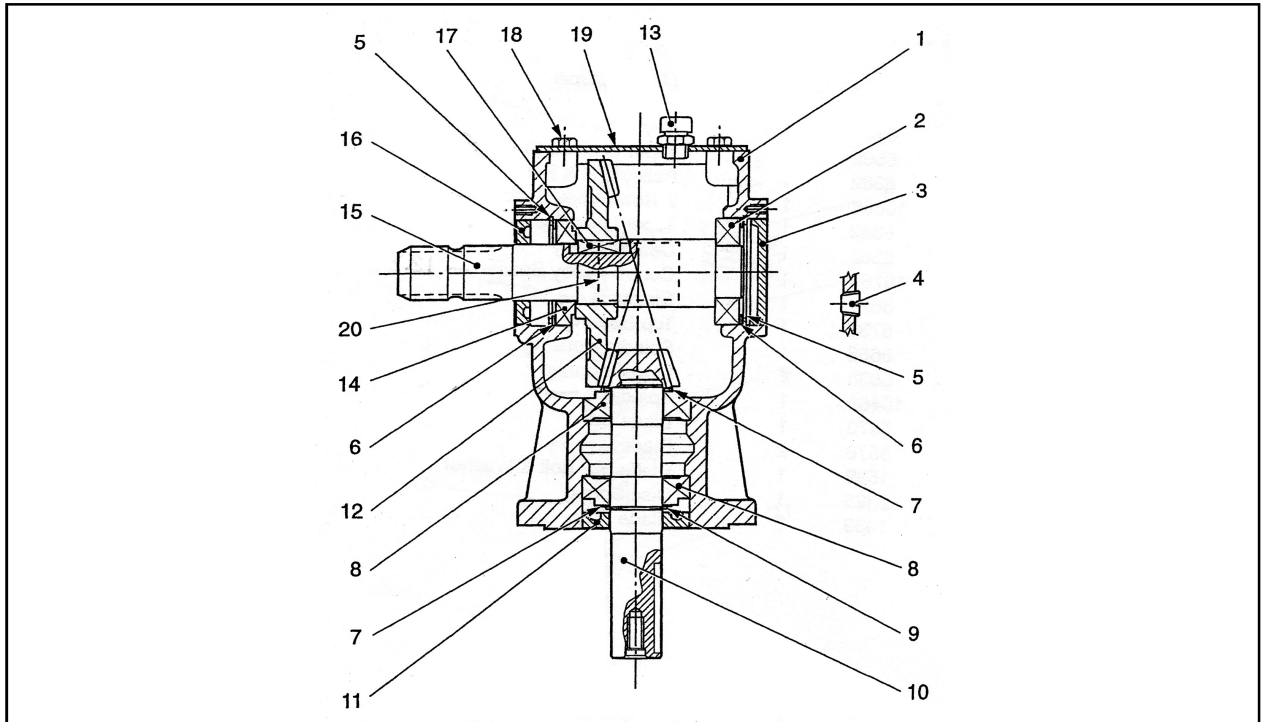
PARTS ILLUSTRATION - RMX 500 DECK DRIVE BELTS



PARTS LIST - RMX 500 DECK DRIVE BELTS

Item No.	Part No.	Description	Qty. per Machine
1	WX-10362	2 Row Pulley	2
2	WX-11362	Taper Lock	2
3	WX-0234	Belt	4
4	WX-10562	Jockey Pulley	2
5	WX-6038	Jockey Bearing	2
6	WX-4022	Circlip	2
7	WX-15903	Jockey Bolt	2
8	WX-11162	Gearbox Pulley	1
9	WX-8662	Taper Lock	1
10	WX-0647	Key	1
11	WX-10462	4 Row Pulley	1
12	WX-11362	Taper Lock	1
13	WX-13066	Jockey Bracket	2
14	WX-16003	Jockey Bracket Fastening Set	2
15	WX-12966	Jockey Pillar - High	1
16	WX-12866	Jockey Pillar - Low	1

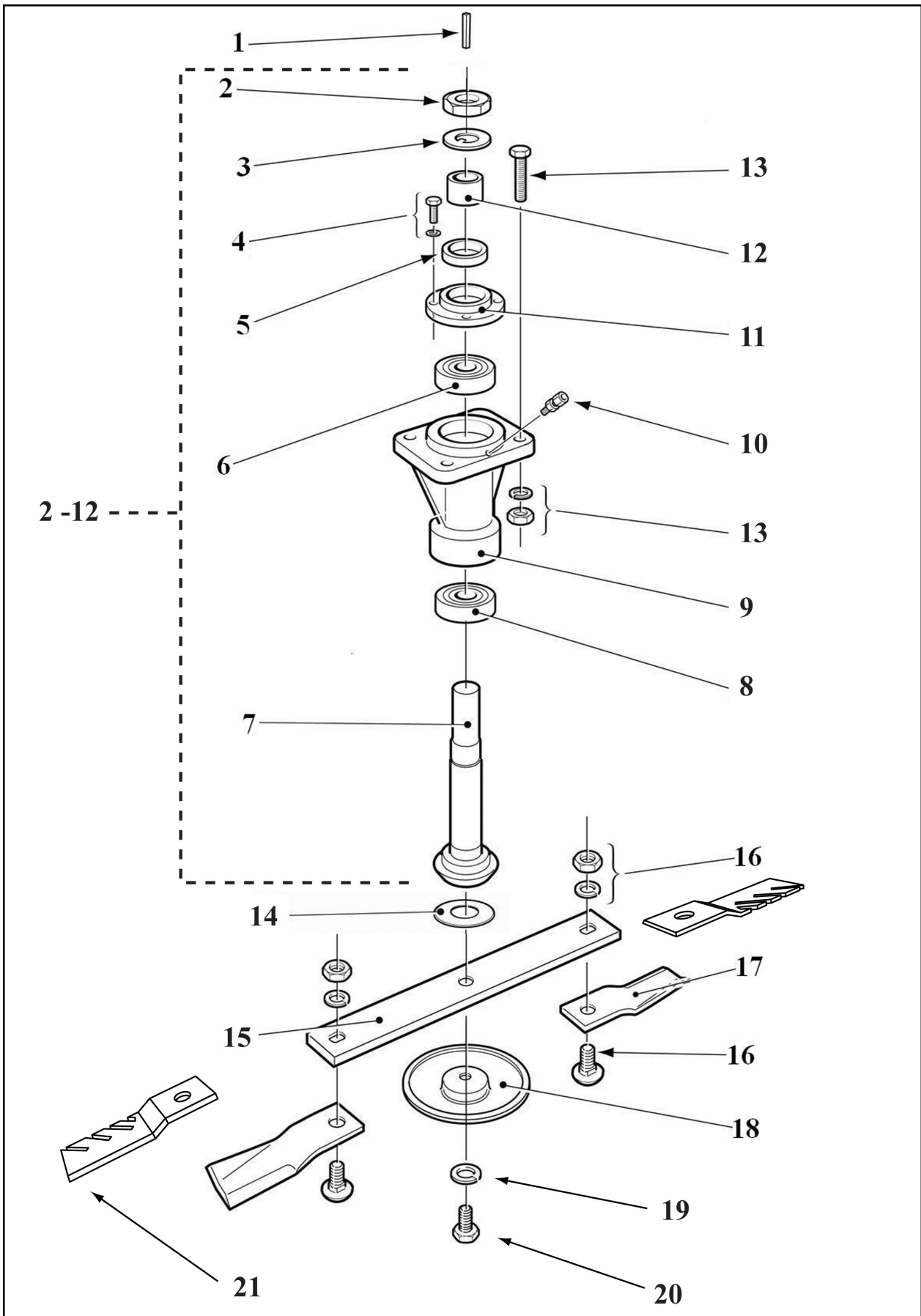
PARTS ILLUSTRATION - DECK GEARBOX



PARTS ILLUSTRATION - DECK GEARBOX

Item No.	Part No.	Description	Qty.
1	GXS-0.151.0300.00	Casing	1
2	GXS-8.0.1.00870	Bearing	1
3	GXS-8.7.00744	Cap	1
4	GXS-8.6.5.00006	Plug	1
5	GXS-8.5.2.00131	Snap Ring	2
6	GXS-0.248.7500.00	Shim	2
7	GXS-0.244.7500.00	Shim	2
8	GXS-8.0.9.00024	Bearing	2
9	GXS-8.5.1.00680	Snap Ring	1
10	GXS-0.151.6001.00	Pinion Shaft	1
11	GXS-8.7.3.00027	Oil Seal	1
12	GXS-0.253.6201.00	Gear Z36	2
13	GXS-8.6.7.00269	Oil Filter Plug	1
14	GXS-8.0.9.00026	Bearing	1
15	GXS-0.151.2002.00	Shaft	1
16	GXS-8.7.3.00055	Oil Seal	1
17	GXS-8.4.1.00993	Parallel Key	1
18	GXS-8.1.1.00343	Bolt	4
19	GXS-0.140.1300.00	Cover	1
20	GXS-0.124.7101.00	Plate	1

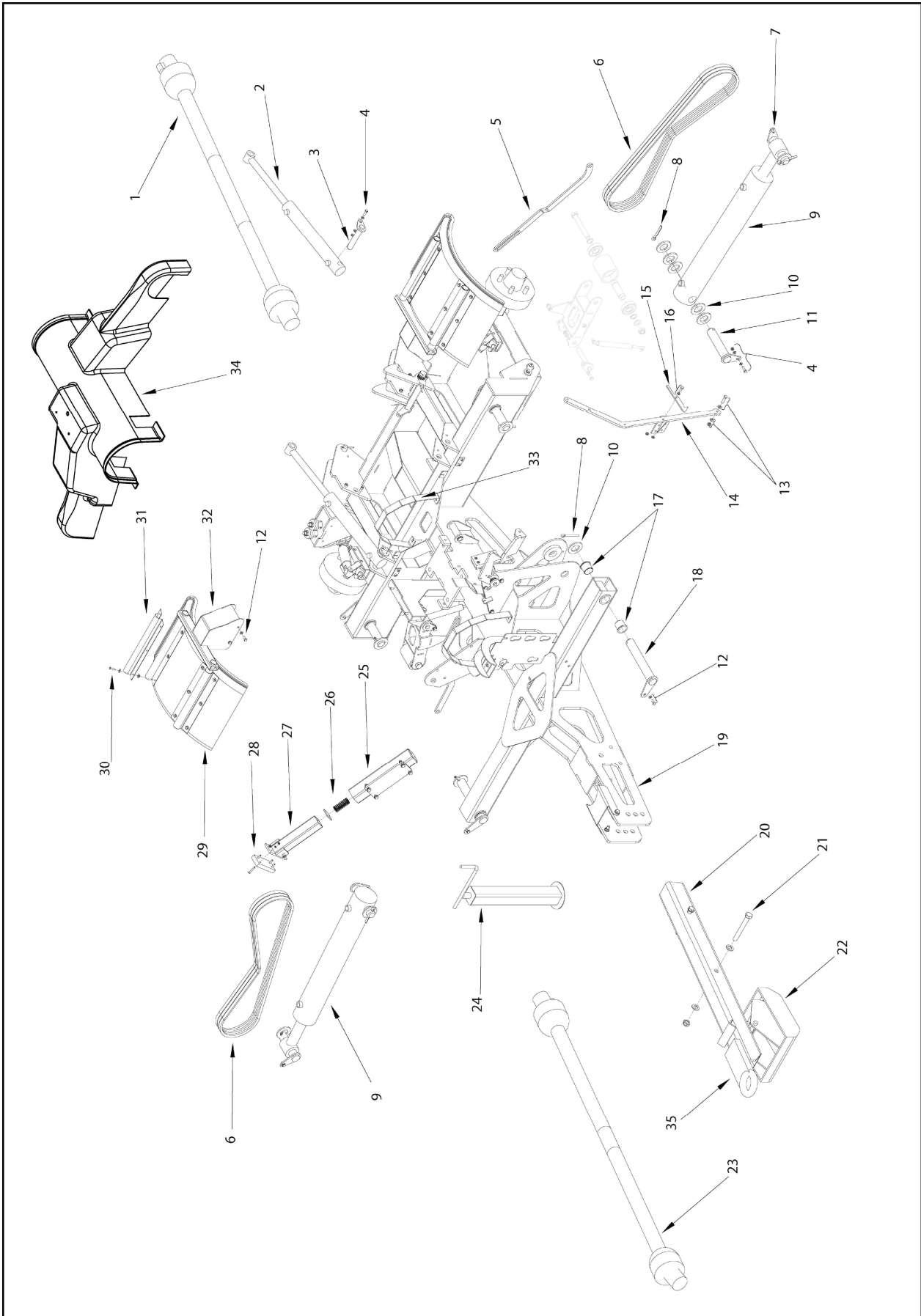
PARTS ILLUSTRATION - RMX SPINDLES ASSEMBLY



PARTS LIST - RMX SPINDLES ASSEMBLY

Item No.	Part No.	Description	Qty. per Spindle
1	WX-1947	Key	1
2	WX-15066	Spindle Nut	1
3	WX-0120	Tab Washer	1
4	WX-4401	Fastening Set	1
5	WX-0145	Seal	1
6	WX-0338	Top Spindle Bearing	1
7	WX-15166	Spindle	1
8	WX-1238	Bottom Spindle Bearing	1
9	WX-1966	Spindle Housing	1
10	WX-0346	Grease Nipple	1
11	WX-2166	Oil Seal Housing	1
12	WX-14966	Spindle Spacer	1
13	WX-2701	Spindle Assembly Fastening Set	1
14	WX-0220	Fibre Washer	1
15	WX-7270	Blade Bar	1
16	WX-1739	Blade Bolt	2
16	WX-3039	Blade Bolt for Mulching Blade	2
17	WX-10070	Gold Cut Blade	2
18	WX-7470	Anti-scalp Boss	1
19	WX-3525	Lock Washer	1
20	WX-0439	Centre Blade Bolt	1
21	WX-10670	Mulching Blade	2
2-12	WX-1966B	Spindle Assembly	1

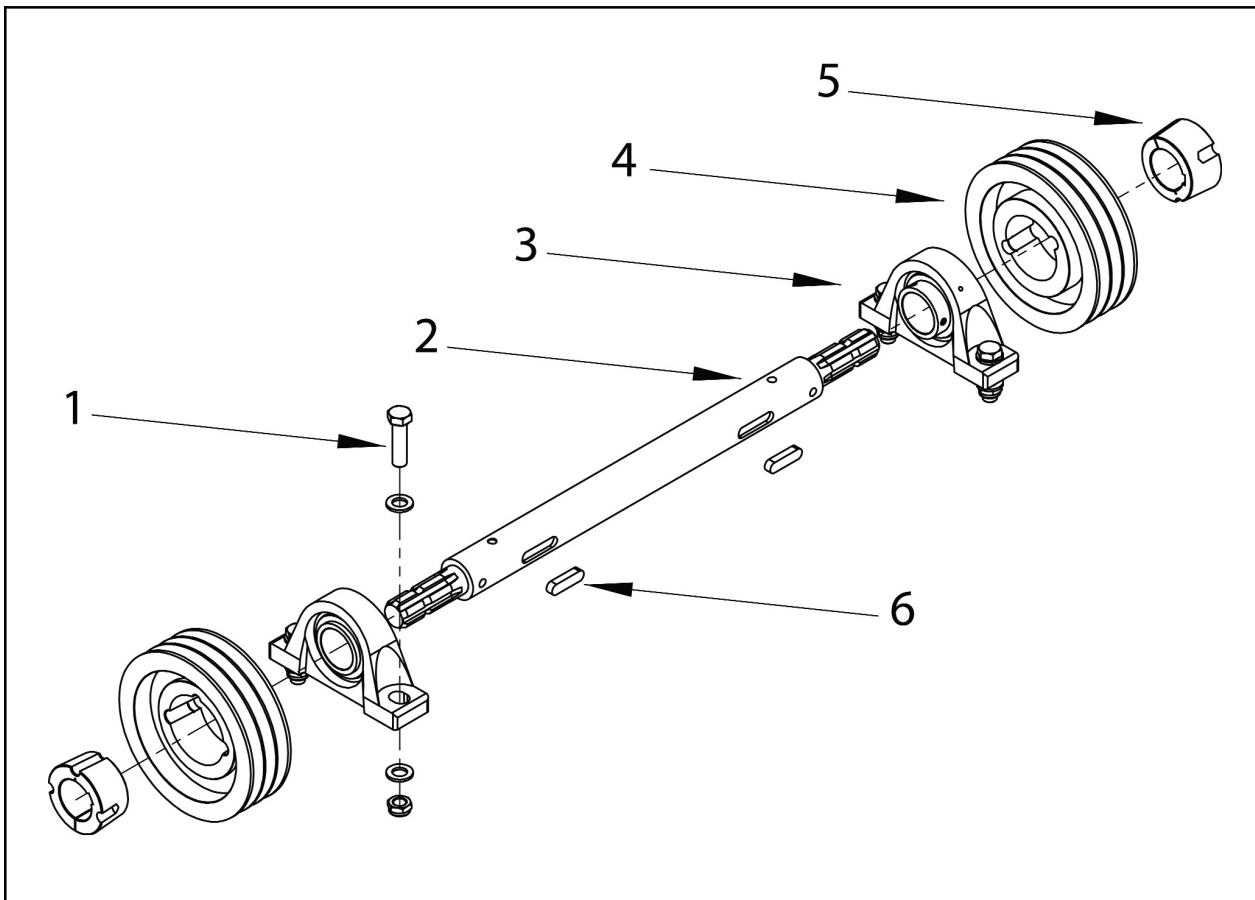
PARTS ILLUSTRATION - TRI-DECK MAIN ASSEMBLY



PARTS LIST - TRI-DECK MAIN ASSEMBLY

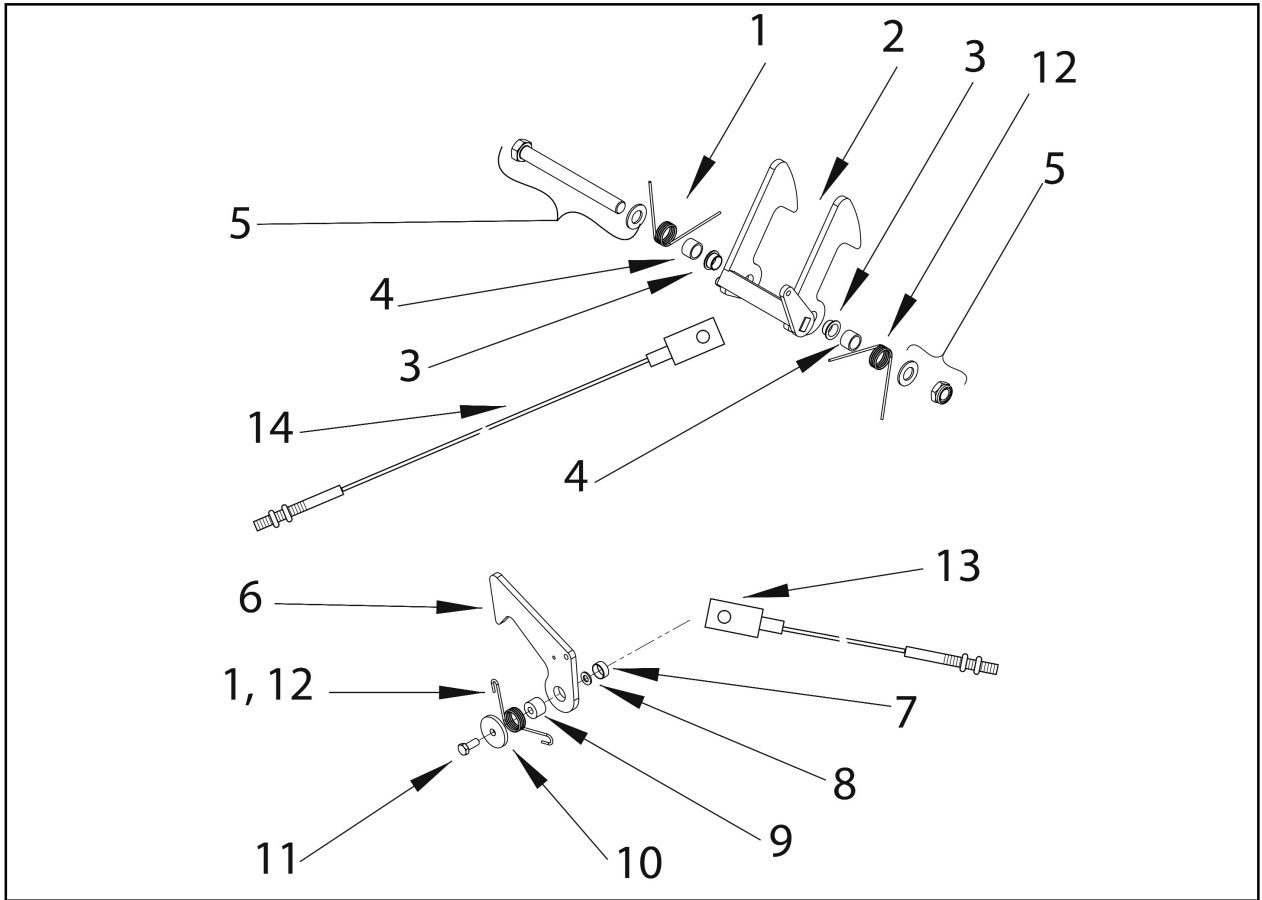
Item No.	Part No.	Description	Qty.
1	WX-7881	Rear PTO Shaft	1
2	WX-1854	Single Acting Ram	2
3	WX-8028	Bearing Pin - Rear Mowr Linkage	4
4	WX-17603	Fastening Bolt	4
5	WX-17776	Tensioner Linkage - Left Hand	1
5	WX-12276	Tensioner Linkage - Right Hand	1
6	WX-5934	Centre Drive Belt	6
7	WX-9028	Wing Ram Pin	2
8	WX-5422	Split Pin	8
9	WX-18356	Single Acting Ram	2
10	WX-3920	Special Washer	16
11	WX-9628	Wing Ram Pin - Fixed End	2
12	WX-17503	Fastening Bolt	2
13	WX-17703	Fastening Bolt	2
14	WX-25780	Lever Catch Release	1
15	WX-23976	Lock Latch Release	3
16	WX-17603	Fastening Bolt	1
17	WX-9038	Bush	4
18	WX-8728	Wing Pivot Pin	2
19	WX-24180	Chassis	1
20	WX-28680	Complete Draw Bar	1
21	WX-17503	Drawbar Fastening Bolt	2
22	WX-16580	Skid c/w Pin	1
23	WX-6981	Front PTO Shaft	1
24	WX-19856	RMX Screw Jack	1
25	WX-27780	Buffer Body	2
26	WX-4725	Spring	2
27	WX-18576	Buffer	2
28	WX-24080	Impact Buffer	2
29	WX-15677	Mudguard	2
30	WX-30401	Fastening Bolt	2
31	WX-11158	Mudguard Stay - Bracket	4
32	WX-16679	Mudguard Bracket	2
33	WX-23476	Lock Hoop (Rear)	1
33	WX-23576	Lock Hoop (Front)	1
34	WX-27580	Belt Cover	1
35	WX-6480	Weld on Towing Eye	1

TRI-DECK MAIN DRIVE ASSEMBLY



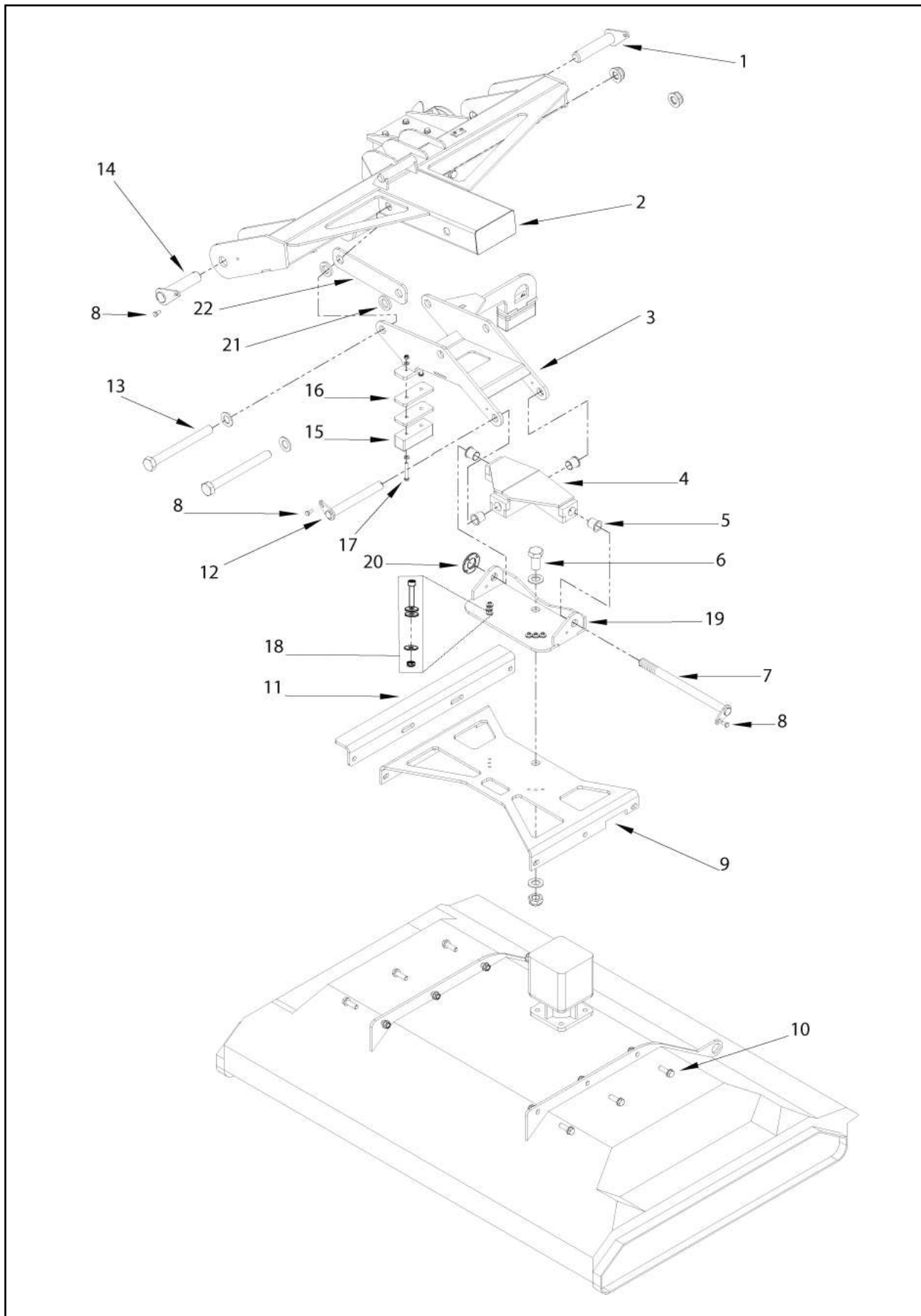
Item No.	Part No.	Description	Qty.
1	WX-16903	Fastening Bolt	4
2	WX-8681	Main Drive Shaft	1
3	WX-8438	Pillow Block Bearing	2
4	WX-12762	Pulley	2
5	WX-12862	Taper Lock	2
6	WX-2247	Key	2

TRI-DECK LATCH ASSEMBLY



Item No.	Part No.	Description	Qty.
1	WX-6125	Left Hand Torsion Spring	3
2	WX-32980	Rear Deck Latch - Left Hand	1
2	WX-33080	Rear Deck Latch - Right Hand	1
3	WX-10028	Bush for Rear Deck Latch	4
4	WX-33180	Sleeve- Rear Deck Latch Spring	4
5	WX-17403	Rear Latch Fastening Set	2
6	WX-8076	Wing Latch	2
7	WX-8538	Bush	2
8	F-XWF210	Flat Washer	2
9	WX-33280	Sleeve - Frong Latch Spring	2
10	WX-1520	Special Washer	2
11	F-XSM1025	Set Screw	2
12	WX-6025	Right Hand Torsion Spring	3
13	WX-8030	Triple Side Deck Release Cable - Short	2
14	WX-8230	Triple Rear Deck Release Cable - Long	2

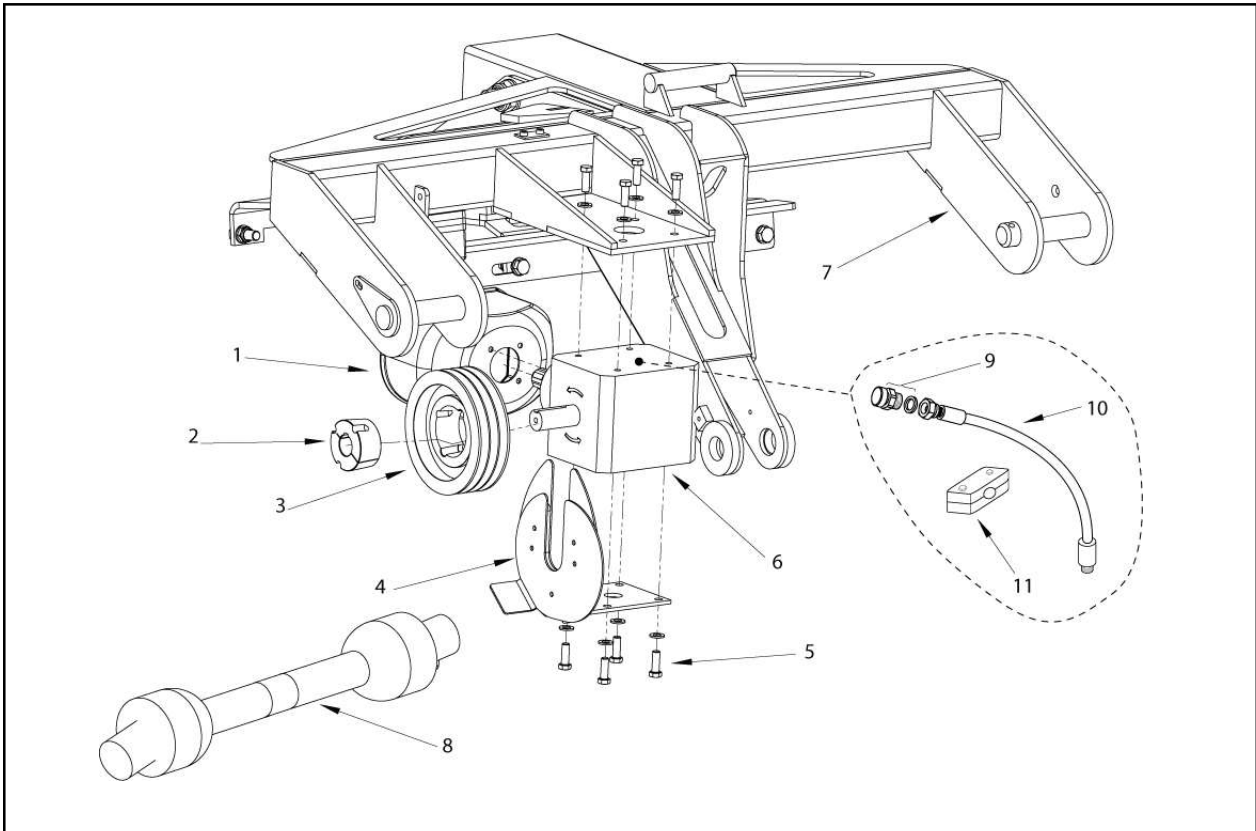
PARTS ILLUSTRATION - WING ASSEMBLY



PARTS LIST - WING ASSEMBLY

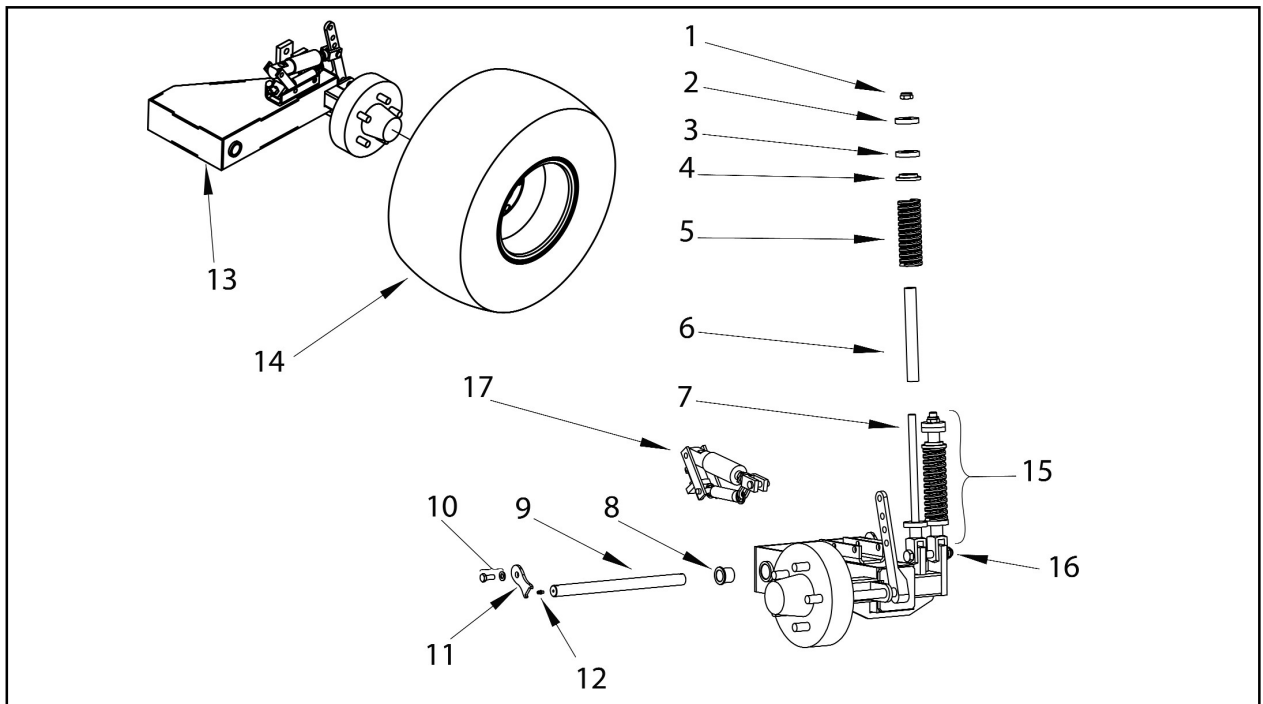
Item No.	Part No.	Description	Qty.
1	WX-10328	Wing Pivot Pin (RMX500)	4
2	WX-18979	RMX500 Wing Arm - Left Hand	1
2	WX-19079	RMX500 Wing Arm - Right Hand	1
3	WX-33380	Gimbal Carriage - Left Hand	1
3	WX-26680	Gimbal Carriage - Right Hand	1
4	WX-26780	Gimbal	2
5	WX-8738	Bush 30 x 34 - 37	8
6	WX-17103	Gimbal Fastening Bolt	2
7	WX-10528	Pin - Gimbal to Deck	2
8	WX-17203	Teardrop Bolt	2
9	WX-26880	Deck Hanger Fabrication	2
10	WX-16903	Fastening Bolt	12
11	WX-8476	Buffer Rest	2
12	WX-8828	Pin - Gimbal Roll	2
13	WX-17303	Gimbal Carriage Bolt	4
14	WX-10328	Wing Pivot Pin	4
15	WX-31680	Rubber Buffer	4
16	WX-9176	Spacer - Wing Buffer	18
17	WX-17003	Buffer Fastening Bolt	8
18	WX-33701	Gimbal Shear Bolt	12
19	WX-11858	Gimbal Bracket	2
20	WX-1405	'C' Nut	2

WING GEARBOX ARRANGEMENT



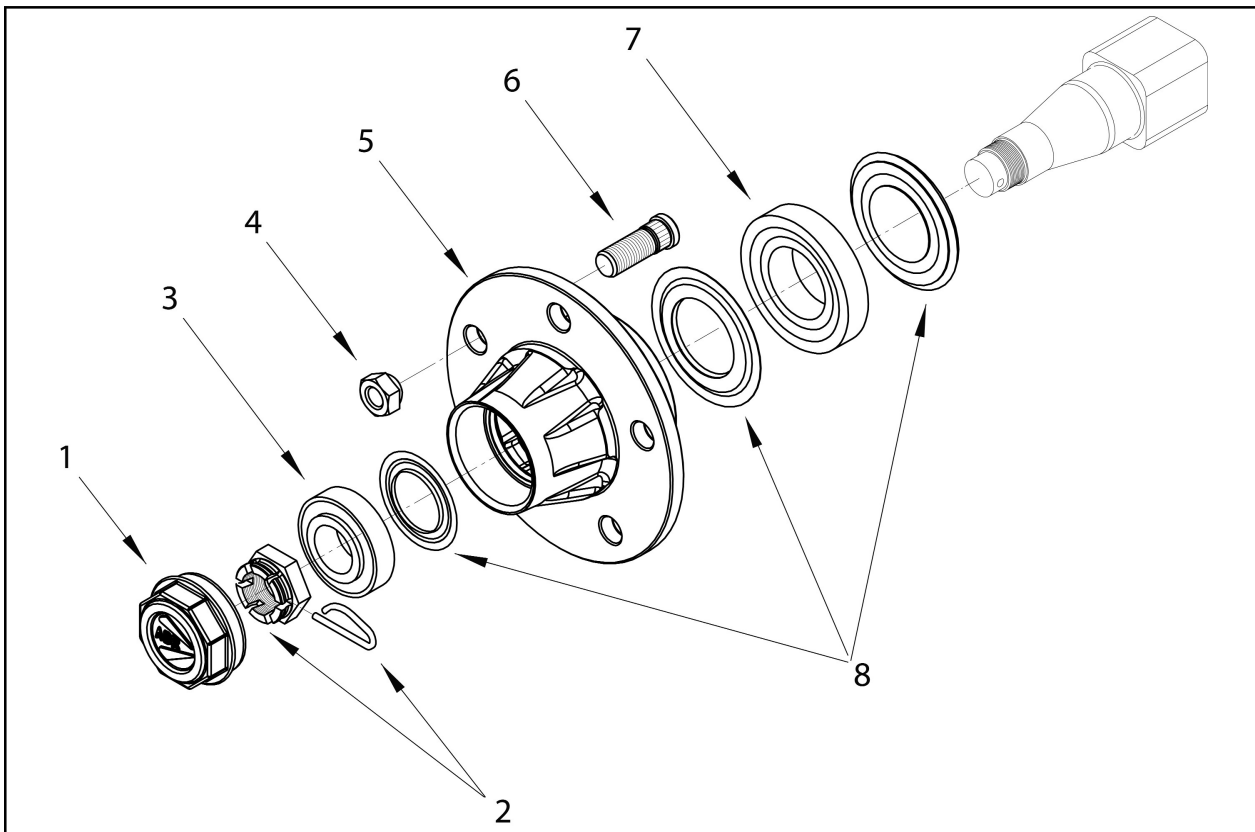
Item No.	Part No.	Description	Qty.
1	WX-16977	PTO Guard (Tri-Deck Wing)	1
2	WX-12962	Taper Lock	1
3	WX-12762	Pulley	1
4	WX-22376	Belt Retainer Outer	1
5	WX-15603	Gearbox Fastening Set	2
6	WX-14057	Gearbox - Right Hand (RMX Triple)	1
6	WX-14157	Gearbox - Left Hand (RMX Triple)	1
7	WX-18979	RMX500 Wing Arm - Left Hand	1
7	WX-19079	RMX500 Wing Arm - Right Hand	1
8	WX-4181	Wing PTO Shaft	2

SUSPENSION



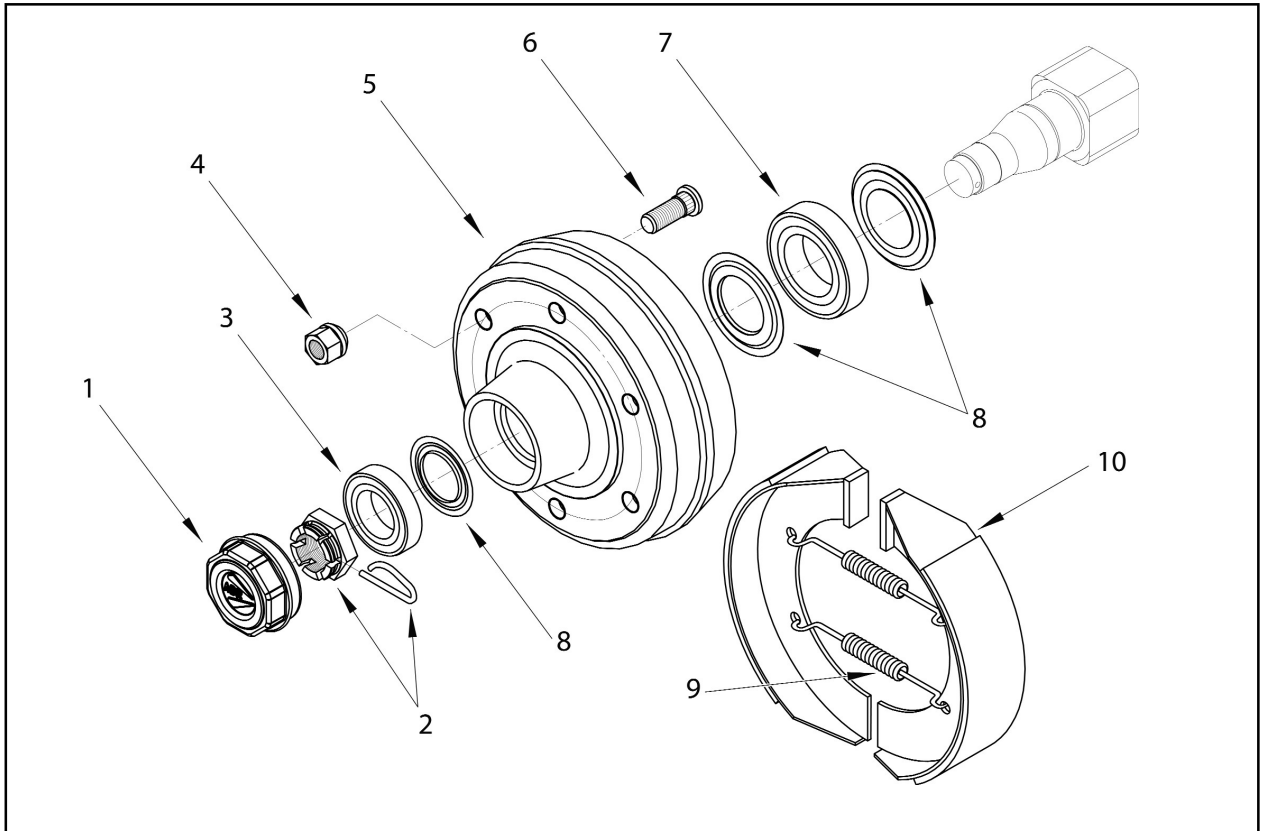
Item No.	Part No.	Description	Qty.
1	F-XNN216	Nylock Nut	2
2	F-XWM216	Washer	2
3	WX-24480	Neoprene Buffer	2
4	WX-24580	Bush - Nylon - Suspension Strut	2
5	WX-4725	Suspension Spring	2
6	WX-4825	Spring Guide	2
7	WX-4925	Strut Rod	2
8	WX-7238	Trailing Arm Bush	1
9	WX-9928	Pin Bearing Trailing Axle	1
10	WX-16503	Fishtail Fastening Bolt	1
11	WX-9558	Pivot Pin Retainer	1
12	WX-0246	Grease Nipple	1
13	WX-16051	Unbraked Trailing Arm Ass - Left Hand	1
13	WX-16151	Unbraked Trailing Arm Ass - Right Hand	1
13	WX-15351a	Braked Trailing Arm Ass - Left Hand	1
13	WX-15451a	Braked Trailing Arm Ass - Right Hand	1
14	WX-6352	RMX Triple Wheel	1
14	WX-6352a	RMX Triple Tyre	1
14	WX-6352b	RMX Triple Wheel Rim Only	1
15	WX-4625	Complete Spring Assembly	2
16	WX-34201	Spring Clevis Fastening Bolt	1
17	WX-1654	Brake Unit	1

UNBRAKED HUB ASSEMBLY



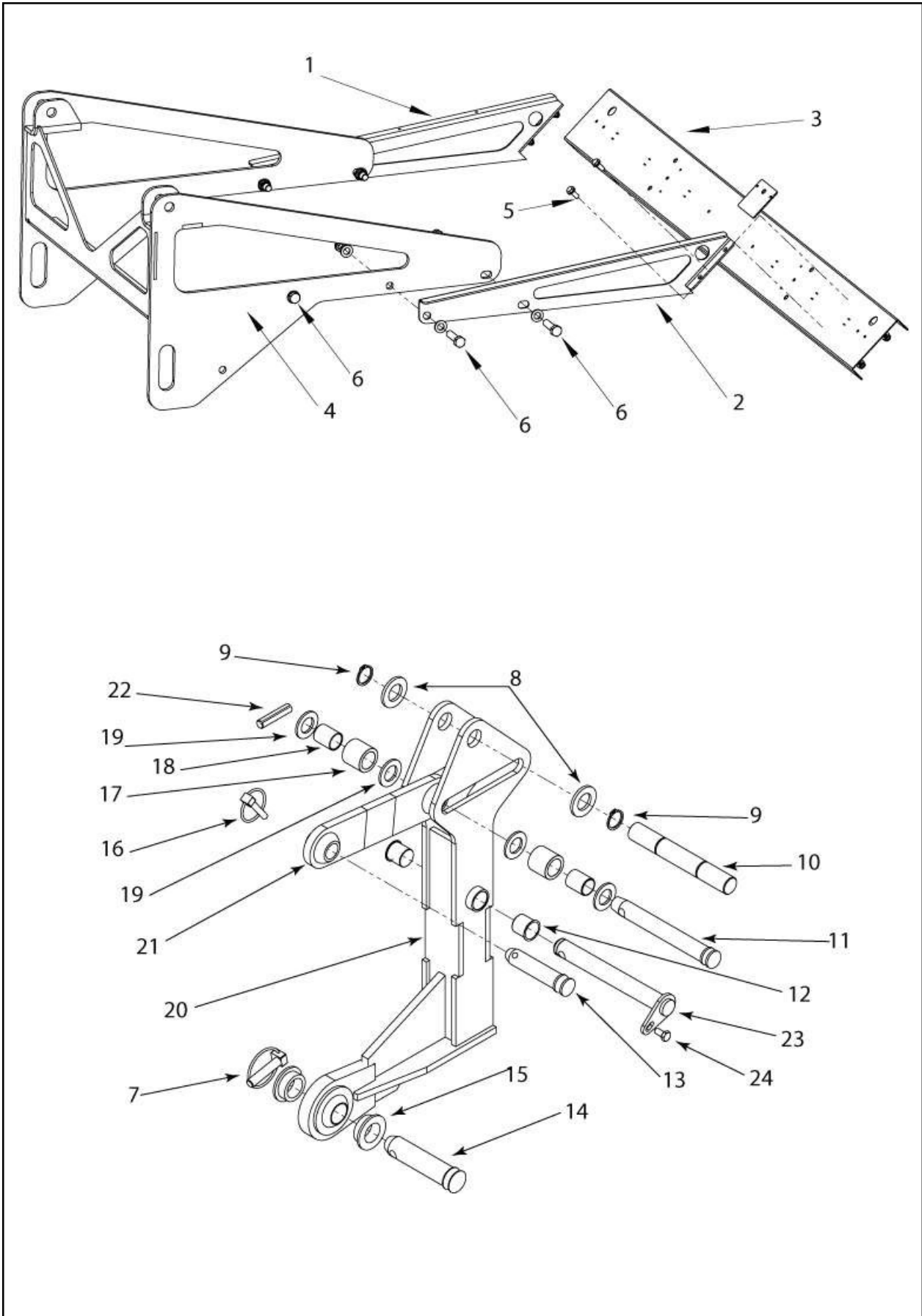
Item No.	Part No.	Description	Qty.
1	WX-10753	Hub Cap	1
2	WX-10953	Nut and Pin	1
3	WX-3438	Bearing	1
4	WX-10553	Wheel Nut	5
5	WX-11153	Non Brake Hub	1
6	WX-10353	Wheel Stud	5
7	WX-3338	Bearing	1
8	WX-2745	Seal Kit	1

BRAKED HUB ASSEMBLY



Item No.	Part No.	Description	Qty.
1	WX-10853	Hub Cap	1
2	WX-11053	Nut and Pin	1
3	WX-9338	Bearing	1
4	WX-11353	Wheel Nut	6
5	WX-11253	Brake Hub	1
6	WX-11453	Wheel Stud	6
7	WX-9438	Bearing	1
8	WX-2845	Seal Kit	1
9	WX-6525	Spring Kit	1
10	WX-18451	Brake Shoe Set	1

PARTS ILLUSTRATION - REAR DECK ASSEMBLY WITH LIGHTBOARD AND LEG

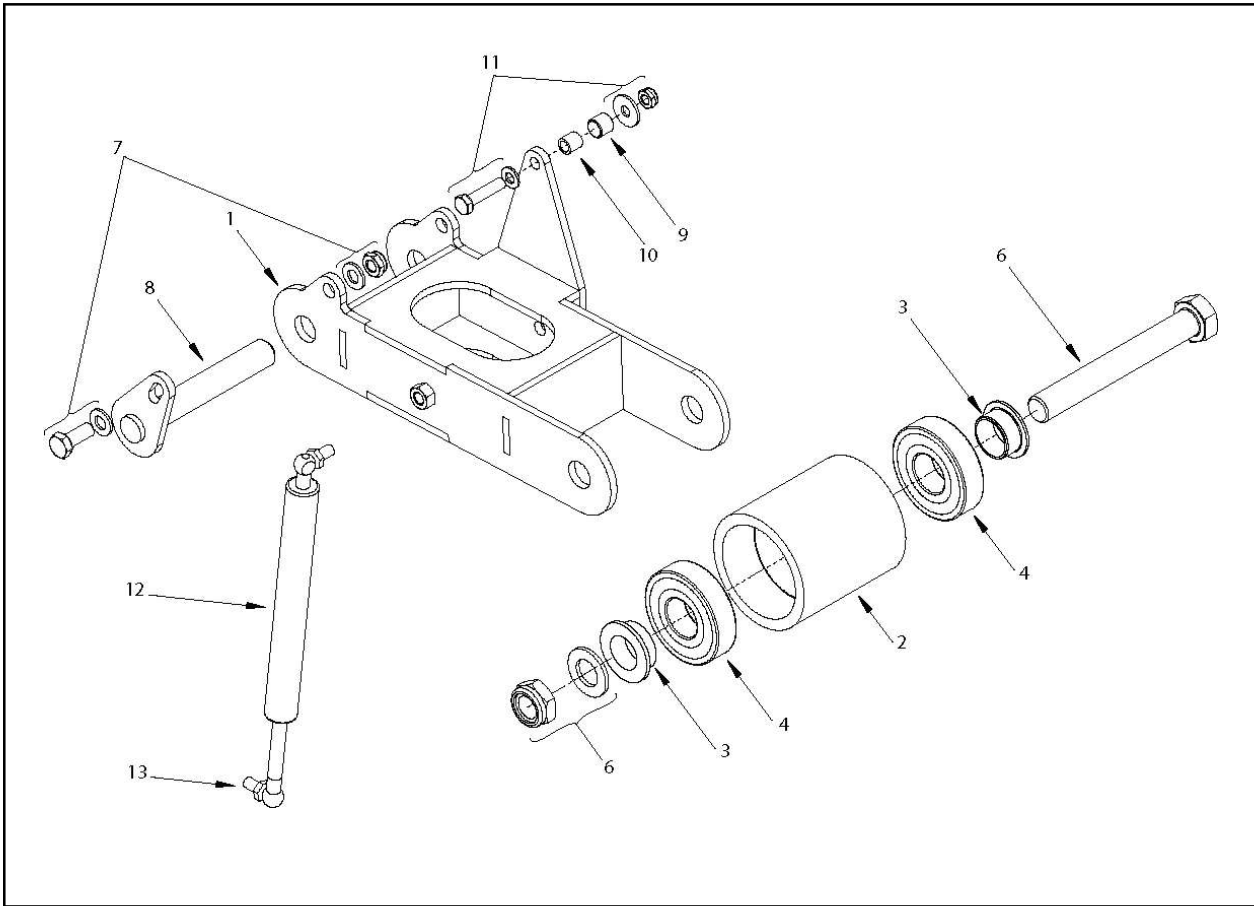


PARTS LIST - REAR DECK ASSEMBLY WITH LIGHTBOARD AND LEG

Item No.	Part No.	Description	Qty.
1	WX-20576	Side Plate - Light Bar - Left Hand	1
2	WX-20676	Side Plate - Light Bar - Right Hand	1
3	WX-17676	Light Bar Fabrication	1
4	WX-17279	Deck Frame - Rear	1
5	WX-4101	Light Bar Fastening Set	4
6	WX-16903	Fastening Set	6
7	WX-0127	Linch Pin	2
8	F-XWF224	Flat Washer	2
9	WX-5722	External Circlip	2
10	WX-8328	Rear Deck Ram Pin	1
11	WX-5822	Rear Deck Linkage Pin	1
12	WX-8938	Bush	2
13	WX-2126	Top Link Pin	1
14	WX-2226	Lower Link Pin	1
15	WX-3828	Bottom Link Bush	2
16	WX-0627	8mm Linch Pin	1
17	SCA-5532706	Spacer 32mm	2
18	WX-11328	Rear Deck Linkage Sleeve	2
19	F-XWF222	Flat Washer	4
Not Shown	WX-6360	Light Loom	1
Not Shown	WX-6360L	Rear Light	2
Not Shown	WX-6360S	Centre Strobe Light	1
20	WX-13979	Leg	2
21	WX-24780	Linkage Bar	2
22	WX-6022	Roll Pin	2

Note:
Items 17 and 18 have been superseded by a single bush part number WX-12928.

PARTS ILLUSTRATION - TENSIONER ARM ASSEMBLY



PARTS LIST - TENSIONER ARM ASSEMBLY

Item No.	Part No.	Description	Qty.
1	WX-25480	Right Hand Arm Fabrication Tensioner	1
1	WX-29380	Left Hand Arm Fabrication Tensioner	1
2	WX-13266	Guide Pulley	1
3	WX-30080	Sleeve - Tensioner Wheel	1
4	WX-6038	Bearing	2
5	WX-5322	Circlip - External - 28 x 1.5 - Din 471	2
6	WX-17803	Guide Pulley Fastening Set	1
7	WX-17203	Belt Tensioner Pin Fastening Set	1
8	WX-11228	Belt Tensioner Pin	1
9	WX-8638	Bush	1
10	WX-25380	Spacer - Linkage Attachment	1
11	WX-17603	Tensioner Fastening Set	1
12	WX-5325	Belt Tension Strut - Right Hand	1
12	WX-5025	Belt Tension Strut - Left Hand	1
13	WV-5125	Strut End Fitting	2

PTO SHAFT OPERATION AND MAINTENANCE

IMPORTANT!

P.T.O. drive shafts must only be used for their intended purpose.

P.T.O. drive shafts are designed for specific machine types and power requirements.

They must not be replaced by other models.

Ensure that the P.T.O. drive shaft is securely connected.

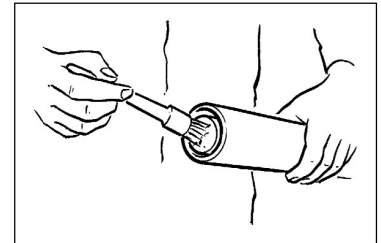
Only use a completely protected drive system:

P.T.O. drive shaft with complete guard and complementary guard on tractor and implement. A complete guard is essential in all working positions.

LUBRICATION

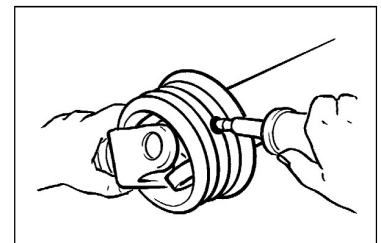
Lubricate with quality grease before starting work and every 40 operating hours.

Ensure the P.T.O. guard bearings are lubricated, the end ball shaped covers need retracting to expose all grease nipples.



Clean and grease the P.T.O. drive shaft before each prolonged period of non-use.

Grease the guard tubes in winter to prevent freezing.

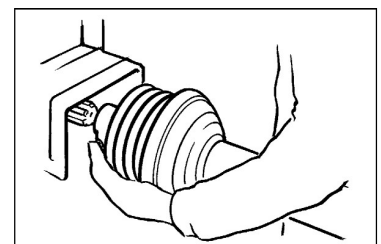


COUPLING THE P.T.O. SHAFT

Clean and grease the P.T.O. and PIN

Q.-d pin

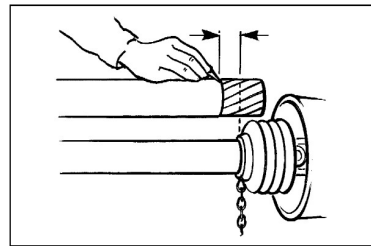
Press q.-d. pin and simultaneously push P.T.O. drive shaft onto P.T.O. until pin engages.



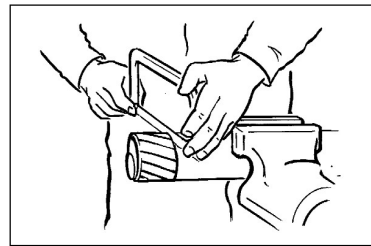
PTO SHAFT OPERATION AND MAINTENANCE

LENGTH ADJUSTMENT

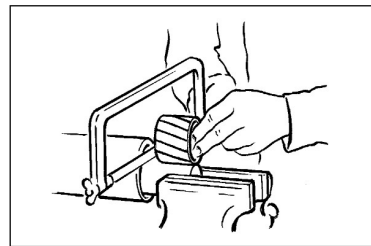
To adjust the length, hold the half-shafts next to each other in the shortest working position and mark them.



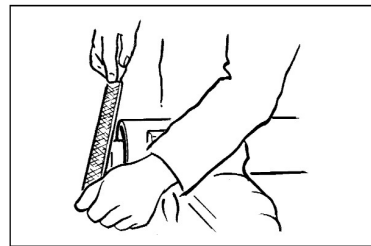
Shorten inner and outer guard tubes equally.



Shorten inner and outer sliding profiles by the same length as the guard tubes.



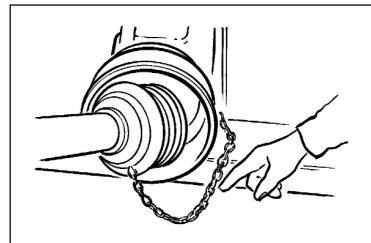
Round off all sharp edges and remove burrs.
Grease sliding profiles.



No other changes may be made to the P.T.O. drive shaft and guard.

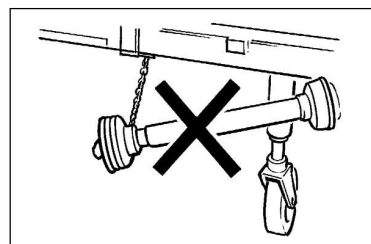
CHAINS

Chains must be fitted so as to allow sufficient articulation of the shaft in all working positions.



Do not let the chains encircle the P.T.O. guard in use as this will shorten the life of the P.T.O. guard.

The PTO drive shaft must not be suspended from the chains! Please use the P.T.O. Support Hook provided.





Certificate of CE Conformity

Machine Model:

RMX 500

Description:

RMX TRI-DECK ROLLER MOWER

*I hereby certify that the machine detailed hereon
conforms to:*

**European Directives 2008/42/EC
Supply of Machinery Regulations 2008
As amended 91/368EEC – 93/44EEC – 93/68EEC
HSE AIS 33**

Signed:

.....
Quality Manager

A handwritten signature in black ink, consisting of several loops and a long horizontal stroke at the end.

Date:

MARCH 2015

Wessex International

Charlton House, Caxton Place, East Portway Industrial Estate, Andover, Hampshire SP10 3QN
Telephone: 01264 345870 Fax: 01264 345 880

www.wessexintl.com



Wessex International
Charlton House, Caxton Close, East Portway Industrial Estate, Andover Hampshire. SP10 3QN
Telephone: 01264 345870 Fax 01264 345880
e-mail: sales@wessexintl.com

www.wessexintl.com



WESSEX PROLINE RMX, CRX & FRX INSTALLATION RECORD

Upon installation of this machine, it is the Dealers responsibility to fill out the Installation Record below and return to Wessex International either by Fax to 01264 348890 or Email warranty@wessexintl.com.

IF THIS FORM IS NOT RETURNED, WE CANNOT ISSUE THE CUSTOMER THE APPLICATION FORM TO REGISTER FOR THE EXTENDED WARRANTY ON THEIR MACHINE.

END USER DETAILS

NAME : _____

ORGANISATION : _____

ADDRESS : _____

TELEPHONE : _____ MOBILE : _____

EMAIL : _____

DEALER : _____ BRANCH : _____

MACHINE MODEL : _____ SERIAL NO: _____

INSTALLATION DATE : _____

THE MACHINE DETAILED ABOVE HAS BEEN CORRECTLY INSTALLED AND THE FOLLOWING POINTS HAVE BEEN DISCUSSED WITH THE CUSTOMER :

- 1 Correct Machine Operation
- 2 Operational Health & Safety
- 3 Machine Setting and Adjustments
- 4 Maintenance
- 5 Importance of tensioning belts after initial 2 - 5 hours work and routinely thereafter

Delivery Checklist

- Oil in gearboxes
- All PTO Shafts properly attached with Safety Chocks attached
- All PTO Shafts greased
- All shields, guards and deflectors in place
- Check wheel nuts are tight
- All fittings tight

Inspected by : _____

IMPORTANT INFORMATION TO PREVENT DAMAGE - RELEVANT TO ALL TRAILED MACHINES

Ensure that the tractor link arms are removed or at least dropped to prevent contact with the PTO shaft when turning. Avoid sharp turns where the rear wheel of the tractor comes into contact with the drawbar or PTO shaft. Turning too sharp can also cause damage to the PTO shaft, it's universal joints and tractor tyres.

DEALER SIGNATURE : _____ NAME : _____

DATE : _____

Upon receipt of this form, we will forward the Extended Warranty Application Form to the End User.

THANK YOU FOR FACILITATING THE SALE OF ANOTHER WESSEX PROLINE MACHINE!

WESSEX INTERNATIONAL

Clarke House, Clarke Close, East Portway Industrial Estate, Andover, Hampshire SP20 3QN
T : 01264 348870 F : 01264 348890 E : sales@wessexintl.com